



Bullet Camera

B1365T



# PIXIM

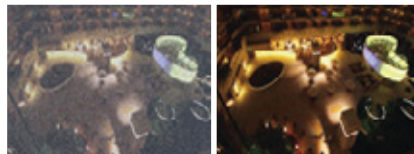
## Icon Driven OSD Menu

ICON Driven OSD Menu will easily guide you through programming options. Simple and fast programming.



## Smart DNR (Digital Noise Reduction)

Smart DNR produces less noise and more color at night without image lagging.



## Programmable Privacy Zone

When privacy is a concern, monitoring can be masked in certain zones within the scene. The user can define up to eight rectangular exclusions.



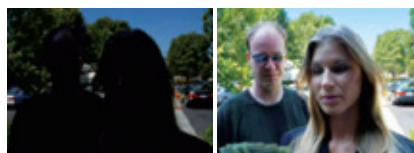
## Powerful WDR (Overexposure Elimination)

Eliminates overexposure to capture all the details of the scene.



## Powerful WDR (Underexposure Elimination)

Eliminates underexposure to capture all the details of the scene.



## Smear Canceling Circuit

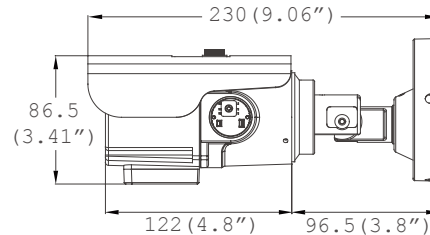
Eliminates glares and reflections from the video images.







## Dimensions (unit : mm)



## Summary

The B1365T is a high performance weather-resistant bullet camera that offers exceptional Wide Dynamic Range and sensitivity for harsh lighting environments, as well as high resolution imaging with its 1/3" PIXIM Nightwolf CMOS sensor. PIXIM's technology allows each pixel to self-adjust in the same scene, giving terrific image quality. PIXIM revolutionizes the way video cameras capture and process images.

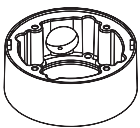
## Features

- 1/3" PIXIM Seawolf CMOS Sensor
- 690 Horizontal TV Lines
- 3.3~12mm Varifocal Auto Iris Lens
- TDN (True Day and Night/IR Cut Filter)
- 3D-DNR (3D Digital Noise Reduction)
- Powerful Wide Dynamic Range
- Ultra Low Light Sensitivity
- Smear Canceling Circuit
- AGC / BLC / AWB
- Programmable Privacy Zones (6) & Motion Detection
- OSD Menu with Built-in Joystick
- IP66 Certified (Weatherproof)
- No Fog or Condensation under Any Weather Condition
- Auto Sensing 12VDC/24VAC with Line Lock
- Secondary Video-BNC Output
- Ball Neck Bracket (Simple Camera Positioning)
- External Lens and OSD Control

## Specifications

VIDEO	
Image Sensor	1/3" PIXIM Nightwolf CMOS Sensor
Total Pixels	768 (H) x 548 (V)
Scanning System	525 Lines, 2 : 1 Interlace
Frequency	15.734KHz (H), 59.95Hz (V)
Synchronization	Internal / Line Lock
Horizontal Resolution	690 Effective Horizontal TV Lines
Minimum Illumination	F1.2 (30IRE): 0.22Lux [Color] F1.2 (30IRE): 0.01 Lux [B&W]
S/N Ratio	50dB (AGC off)
Video Output	CVBS: 1.0Vp-p / 75 Ω
LENS	
Focal Length	3.3-12mm
Lens Type	DC Auto Iris
OPERATIONAL	
Lens	MANUAL / DC
AE Preference	OUTDOOR / INDOOR
Back Light Compensation	OFF / ON
Wide Dynamic Range	LOW / NORMAL / MEDIUM / HIGH / CUSTOM
Auto Gain Control	LOW / MEDIUM / HIGH
Star-Light	OFF, x2-30FPS ~ x64
White Balance Mode	ATW/ PUSH-LOCK / MANUAL / AWC/ NORMAL
Day & Night	AUTO / COLOR / B&W
Mirror	OFF / MIRROR / V-FLIP / ROTATE
Sharpness	-8 ~ 8
3D Digital Noise Reduction	OFF / LOW / MEDIUM / HIGH
Digital Zoom	x1 ~ x8
Privacy Zones	OFF / ON (6 Programmable Zones)
Baudrate	2400 ~ 38500
Protocol	PELCO-D
Language	ENGLISH, DEUTSCH, FRANCAIS, ITALIAN, ESPAÑOL, DUTCH
ENVIRONMENTAL	
Operating Temperature	-10°C ~ 55°C (14°F ~ 131°F)
Operating Humidity	Less than 90% (Non-Condensing)
Storage Temperature	-20°C ~ 70°C (-4°F ~ 158°F)
IP Rating	IP66 (Protects against dust and high pressure water.)
ELECTRICAL	
Power Requirement	Dual (12VDC & 24VAC)
Power Consumption	12VDC: 3.9W, 325mA 24VAC: 4.2W, 175mA
MECHANICAL	
Housing Material	Aluminum
Dimensions	230 X 86.5 mm (9.06 X 3.41 in)
Weight	1.50 lbs <small>*Specification is subject to change without prior notice.</small>

## Accessories (Optional)



DWC-BLJUNC  
Junction Box for B1&B2 Housing



DWC-PMB-BU  
Pole Mount for B1&B2 Housing