

B2382TIR

High Resolution Bullet Camera



Main Features

- 1/3" Sony Super HAD CCD II
- 620 TV Lines [B&W], 600 TV Lines [Color]
- OMNI-Focus 2.9~8.5mm Auto Iris Lens
- 3X Motorized Zoom
- 70ft Range IR with Intelligent Camera Sync, Smart IR
- IP66 Certified, No Fog or Condensation

Always in Focus, All the Time

OMNI-PLUS™

OMNI-Focus Lens

Crisp, clear, always in focus. Utilizes three lenses to view fore-, mid-, and background as one. Each camera provides 20/20 precision in all your surveillance applications.



Intelligent Motion Detection

When motion is detected in a viewing area, the lens optically zooms in up to 3X for a programmable period of time and returns back to its normal condition.



IR Remote Programming

OMNI-Plus Cameras can be programmed and customized for each application with our complimentary IR Remote. Programming is achieved from line of sight 90° from the camera.



INFINITY

Icon Driven OSD Menu

ICON Driven OSD Menu will easily guide you through programming options. Simple and fast programming.



Smart DNR (Digital Noise Reduction)

Smart DNR produces less noise and more color at night without image lagging.



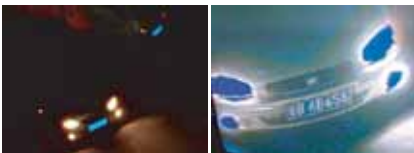
WDR (Wide Dynamic Range)

Enables the camera to capture perfect images in both bright and dark environments simultaneously.



HME (Highlight Masking Exposure)

Masks overly exposed light to produce a true video image of any environment.



Star-Light (Super Low Light Technology)

Offers a slow shutter feature that increases the length of time the shutter remains open to collect additional light, illuminating typically dark environments.



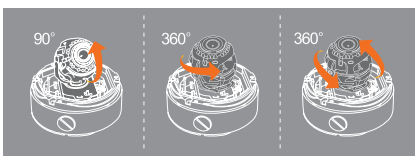
Programmable Privacy Zone

When privacy is a concern, monitoring can be masked in certain zones within the scene. The user can define up to eight rectangular exclusions.



3-Axis Gimbal

Choose the exact scene you wish to view with our flexible 3-Axis Gimbal technology.



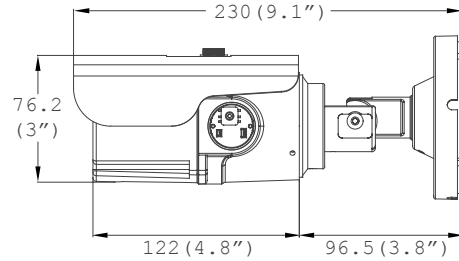
Smart IR-See what is really happening at night.

The breakdown of the video image into five zones allows for an even distribution of the IR, which prevents excessive illumination.





Dimensions (unit : mm)



Summary

Our Infinity DSP Series ensures excellent color sensitivity and high resolution in both day and night applications. The technology utilizes Star-Light, Wide Dynamic Range, Highlight Masking Exposure, and other great features to help produce a clear horizontal resolution of up to 620 TV lines. Super Vision at Anytime, Anywhere.

Features

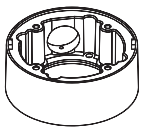
- 1/3" Sony Super HAD II CCD
- 620 TV Lines [B&W], 600 TV Lines [Color]
- OMNI-Focus 2.8~8.5mm Auto Iris Lens, 3X Motorized Zoom
- 70ft Range IR with Intelligent Camera Sync, Smart IR
- TDN (True Day and Night / IR Cut Filter)
- WDR (Wide Dynamic Range)
- Smart DNR (Digital Noise Reduction)
- Star-Light (Super Low Light Technology)
- HME (Highlight Masking Exposure)
- Programmable Privacy Zones (8) & Motion Detection
- AGC / BLC / AWB
- IP66 Certified (Weatherproof)
- No Fog or Condensation under Any Weather Condition
- Easy Icon Driven OSD Menu with Built-in Joystick
- Auto Sensing 12VDC/24VAC with Line Lock
- RS-485 Built-in
- Secondary Video-BNC Output

Specifications

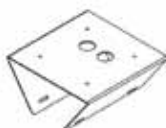
VIDEO	
Image Sensor	1/3" Sony Super HAD CCD II
Total Pixels	811 (H) x 508 (V), 411K Pixels
Scanning System	2 : 1 Interlace
Frequency	15.734KHz (H), 59.95Hz (V)
Synchronization	Internal or External
Horizontal Resolution	620 TV Lines [B&W], 600 TV Lines [Color]
Minimum Illumination	F1.2 (30IRE): 0.14 Lux [Color] F1.2 (30IRE): 0.00 Lux [B&W]
S/N Ratio	50dB (AGC off)
Video Output	CVBS: 1.0Vp-p / 75 Ω
LENS	
Focal Length	2.9-8.5mm
Lens Type	DC Auto Iris, OMNI-Focus
IR Distance	70ft Range IR
Zoom	3X Motorized Zoom
OPERATIONAL	
Back Light	OFF / BLC / HME / WDR
Auto Gain Control	OFF / LOW / MID / HIGH / HIGHEST
Star-Light	OFF / X2-X1024
3D Digital Noise Reduction	OFF / LOW / MID / HIGH / SMART
White Balance	AWC / ATW / MANUAL / PUSHLOCK
Mirror	OFF / MIRROR
Sharpness	0-30
Gamma	MANUAL / 0.45 / 0.60 / 1.0
Side Light Compensation	OFF / ON
Night Up	OFF / ON
Motion Detection	OFF / ON (4 Areas)
Privacy Zones	OFF / ON (8 Programmable Zones)
Dead Pixel Cancellation	OFF / AUTO
Language	ENGLISH / MANDARIN / CANTONESE / JAPANESE / GERMAN / FRENCH / ITALIAN / RUSSIAN / SPANISH / DUTCH
ENVIRONMENTAL	
Operating Temperature	-10°C ~ 55°C (14°F ~ 131°F)
Operating Humidity	Less than 90% (Non-Condensing)
Storage Temperature	-20°C ~ 70°C (-4°F ~ 158°F)
IP Rating	IP66 (Protects against dust and high pressure water.)
ELECTRICAL	
Power Requirement	Dual (12VDC & 24VAC)
Power Consumption	12VDC: 3.3W, 275mA / LED ON 6.6W, 550mA 24VAC: 3.8W, 158mA / LED ON 7.1W, 295.8mA
MECHANICAL	
Housing Material	Aluminum
Dimensions	230 X 76.2 mm (9.1 X 3 in)
Weight	1.5 lbs

*Specification is subject to change without prior notice.

Accessories (Optional)



DWC-BLJUNC
Junction Box for B1&B2 Housing



DWC-PMB-BU
Pole Mount for B1&B2 Housing