



 **STAR-LIGHT™**

microDOME

MC352

1/3 SHARP CCD

IP66 CERTIFIED

LOW PROFILE



WHITE



RED



GREEN



BLUE



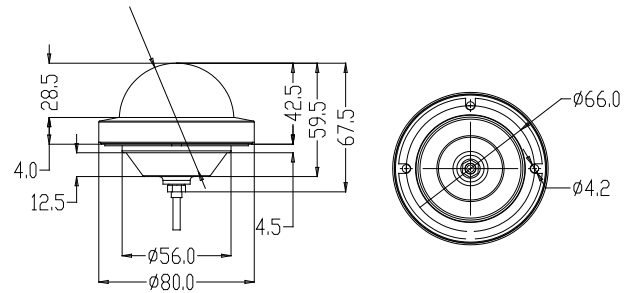
BLACK

 **OPTIONAL TRIM RINGS**
available in four colors

Micro Dome MC352



Dimensions (unit : mm)



Summary

MC352 Micro Dome Cameras are High Resolution cameras that offer innovative features in a sleek, attractive design. This compact camera utilizes the premier 1/3" SHARP CCD chip set, offering clear imaging. This camera is IP66 rated with shock resistant aluminum housing and offers colorful accessories for the final decorative touch. This camera is perfect for any application where aesthetics and low profile are vital.

Features

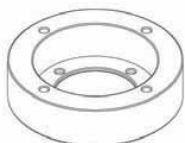
- 1/3" SHARP CCD
- 600 TV Lines (Color), 620 TV Lines (B/W)
- 3.6mm Fixed Iris Lens
- Low Power Consumption (Max 0.7W)
- Enhanced Sensitivity 0.4 Lux F1.2
- 3D Gimbal for Easy Control
- Wide Operating Voltage (8VDC~18VDC)
- IP66 Certified
- 5 Year Warranty

Specifications

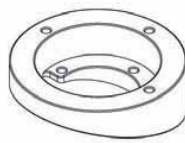
VIDEO	
Image Sensor	1/3" SHARP CCD
Total Pixels	811 (H) x 508 (V), 411K Pixels
Effective Pixels	800 (H) x 492 (V)
Lens	3.6mm Fixed Iris Lens
Frequency	15.734KHz (H), 59.95Hz (V)
Video Output	VBS 1.0Vp-P (75 Load)
Horizontal Resolution	620 TV Lines [B&W], 600 TV Lines [Color]
Minimum Illumination	F1.2 (30IRE): 0.14 Lux [Color] F1.2 (30IRE): 0.03 Lux [B&W]
S/N Ratio	45dB
ENVIRONMENTAL	
Operating Temperature	-10°C ~ 55°C (14°F ~ 131°F)
Operating Humidity	Less than 90% (Non-Condensing)
Storage Temperature	-20°C ~ 70°C (-4°F ~ 158°F)
ELECTRICAL	
Power Requirement	12VDC
Power Consumption	Max 2.0 Watt
MECHANICAL	
Housing Material	Aluminum
Dimensions	80 X 28mm (3.15x 2.31 in)
Weight	0.4 lbs

*Specification is subject to change without prior notice.

Accessories (Optional)



DWC-MCSM
Micro Dome Surface Mount Bracket



DWC-MCAM
Micro Dome Angle Mount Bracket



DWC-MC RED
Trim Ring (Red Color)



DWC-MC GRN
Trim Ring (Green Color)



DWC-MC BLU
Trim Ring (BlueColor)



DWC-MC BLK
Trim Ring (BlackColor)