

INSTRUCTION MANUAL

MC352 /MC352-29

About this manual

Before installing and using the camera, please read this manual carefully. Be sure to keep it handy for later reference.

WARRANTY INFORMATION

Digital Watchdog (referred to as "the Warrantor") warrants the Camera Series against defects in materials or workmanship as follows:
LABOR: For the initial five (5) years from the date of original purchase, if the camera is determined to be defective, the Warrantor will repair or replace the unit, with new or refurbished product at its option, at no charge.

PARTS: In addition, the Warrantor will supply replacement parts for the initial five (5) years. To obtain warranty or out of warranty service, please contact a Technical Support Representative at **1-866-446-3595** Monday through Friday from 9:00 AM to 5:00 PM Eastern.

A purchase receipt or other proof of the date of the original purchase is required before warranty service is rendered. This warranty only covers failures due to defects in materials and workmanship which arise during normal use. This warranty does not cover damage which occurs in shipment or failures which are caused by products not supplied by the Warrantor or failures which result from accident, misuse, abuse, neglect, mishandling, misapplication, alteration, modification, faulty installation, set-up adjustments, improper antenna, inadequate signal pickup, maladjustment of consumer controls, improper operation, power line surge, improper voltage supply, lightning damage, rental use of the product or service by anyone other than an authorized repair facility or damage that is attributable to acts of God.

LIMITS AND EXCLUSIONS

There are no express warranties except as listed above. The Warrantor will not be liable for incidental or consequential damages (including, without limitation, damage to recording media) resulting from the use of these products, or arising out of any breach of the warranty. All express and implied warranties, including the warranties of merchantability and fitness for particular purpose, are limited to the applicable warranty period set forth above.

Some states do not allow the exclusion or limitation of incidental or consequential damages, or limitations on how long an implied warranty lasts, so the above exclusions or limitations may not apply to you.

PRECAUTIONS

- Do not open or modify
Do not open the cabinet exit during maintenance and installation, as it may be dangerous and cause damages.
- Do not put objects inside the unit
Make sure that no metal objects or flammable substances get inside the camera. It could cause fire, short-circuits or damages.
- Be careful when handling the unit
To prevent damage, do not drop the camera or subject it to strong shock or vibration.
- Install away from electric or magnetic fields
- Protect from humidity and dust
- Protect from high temperature
Be careful when installing close to the ceiling, in a kitchen or boiler room, as the temperature may raise to high levels.
- Cleaning
Dirt can be removed from the cabinet only by wiping it with a soft cloth moistened with a soft detergent solution.
- Mounting Surface
The mounting surface material must be strong enough to secure the camera.

This warranty gives you specific legal rights and you may also have other rights that vary from state to state. If the problem is not handled to your satisfaction, then write to the Address above.

Service calls which do not involve defective materials or workmanship as determined by the Warrantor, in its sole discretion, are not covered. Costs of such service calls are the responsibility of the purchaser.

TROUBLESHOOTING

Before sending the camera out for repair, check the items below. If the problem persists after checking these items, contact your service center.

■ If no image appears.

- Is the coaxial cable attached securely?
- Are the power and voltage normal?
- Has the iris of the lens inside the camera been adjusted correctly (with the level volume) ?
- Is there adequate illumination?

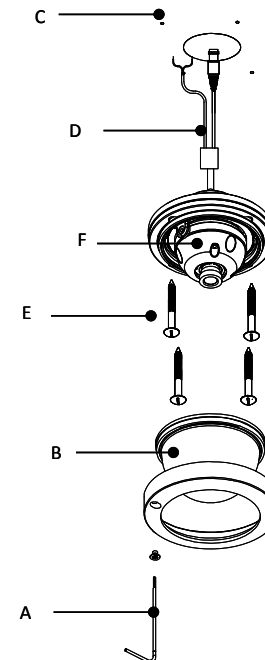
■ If the image is unclear

- Is the lens in focus?
- Is the lens dirty?
- Dirt of fingerprints on the lens can adversely affect the images. Gently wipe any dirt or fingerprints off the lens with a soft cloth or lens cleaning paper and cleaning fluid (commercially available).
- Is the monitor adjusted correctly?

WARNING:

TO PREVENT THE RISK OF FIRE OR ELECTRIC SHOCK, DO NOT EXPOSE THIS APPLIANCE TO RAIN OR MOISTURE.

INSTALLATION



A. Removing the screw on the upper case by using L-wrench.

B. Separate the upper case from the bottom case

C. Make the 4 mounting screw hole on the ceiling/wall by drawing the positions using the bottom case

D. Put Power cable and Video cable into the ceiling/wall.

E. Align the bottom case to the ceiling/wall by using the screws.

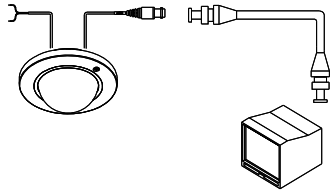
F. Adjust the camera to its position (Reference - "CAMERA SETTING")

G. Connect the upper case and bottom case.

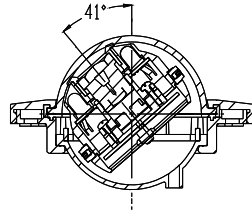
H. Tighten the Stop Screw to the upper case using L-wrench.

CONNECTIONS AND CAMERA SETTINGS

■ CONNECTIONS



■ LENS ADJUSTMENTS



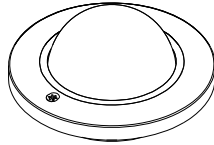
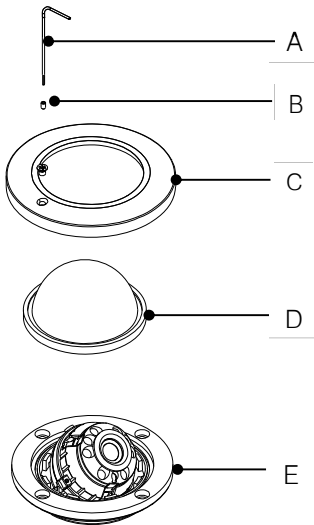
CAUTION

Check for polarity when using a DC 12V power supply.

Adjust the panning(360°) and tilt(41°) position.

■ CAMERA SETTINGS

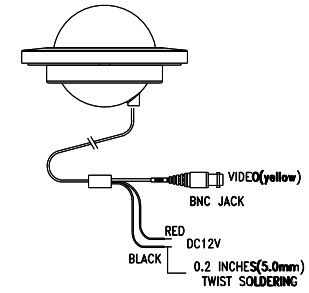
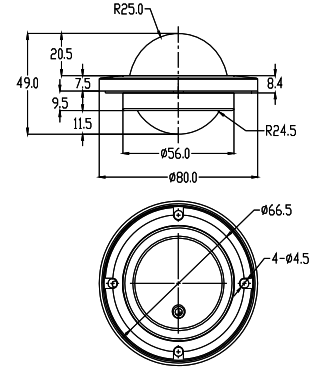
(Upper Case & Bottom Case)



Camera Position Adjustment :

- (1) Loosen the Screw(B) on the upper case by using L-Wrench(A).
- (2) Separate BOTTOM CASE(E) from UPPER CASE(C) by turning UPPER CASE(C) to the right.
- (3) Separate CLEAR DOME(D) from BOTTOM CASE(E).
- (4) Fixing the camera position in BOTTOM CASE(E).
- (5) Assemble CLEAR DOME(D) and UPPER CASE(C) with BOTTOM CASE(E)
- (6) Tightening Screw(B) on the Upper case(C) by using L-Wrench(A).

DIMENSIONS



Specifications		
Model	MC352 / MC352-29 (Day & Night)	
Camera TYPE	Color	Anti-Vandal Digital Micro Dome Camera
	Mount	M9
Image	Device	1/3" Super HAD II CCD
	Pixels-Total	811(H) x 508(V)
	Pixels-Effective	768(H) x 494(V)
Scanning	System	NTSC
	Horizontal Frequency Internal Mode	15,734Hz
	Vertical Frequency Internal Mode	59.94Hz
Min. Scene Illumination	F1.2 (30IRE, MC352), IR LED (MC352DIR)	0.4 Lux
IR DISTANCE	IR (MC352DIR only)	23 feet range
DIP Switch		W/O
Lens	Fixed Length	3.6mm
		2.9mm(MC352-29)
Resolution	Horizontal	540 TV Lines
Video Output	VBS 1.0Vp-p	1.0Vp-p (75 load)
S/N Ratio	S/N Ratio	48dB
Environmental	Operating Temperature	-10°C ~ +50°C
	Humidity	Less than 90%
Power	Power Requirement	12VDC
	Power Consumption	12VDC: 77mA
Physical Specification	Dimensions(φ x H)	80.0 x 28.0mm
	Nema Type	IP66
	Weight	0.4lbs
Certifications	CE, FCC, RoHS	Certified