

# DWC-MC355T Micro Dome Camera

User Manual



## ABOUT MANUAL

Before installing and using the camera, please read this manual carefully. Be sure to keep it handy for future reference.

## PRECAUTIONS

---

- Do not open or modify.
- Do not open the case except during maintenance and installation, for it may be dangerous and can cause damages.
- Do not put objects into the unit.
- Keep metal objects and flammable substances from entering the camera. It can cause fire, short-circuits, or other damages.
- Be careful when handling the unit.
- To prevent damages, do not drop the camera or subject it to shock or vibration.
- Do not install near electric or magnetic fields.
- Protect from humidity and dust.
- Protect from high temperature.
  - Be careful when installing near the ceiling of kitchen or a boiler room, as the temperature may rise to high levels.
- Cleaning
  - To remove dirt from the case, moisten a soft cloth with a soft detergent solution and wipe.
- Mounting Surface.
  - The material of the mounting surface must be strong enough to support the camera.

## FCC COMPLIANCE

---

This equipment has been tested and found to comply with the limits for a Class B digital device, pursuant to part 15 of the FCC rules. These limits are designed to Provide reasonable protection against harmful interference. when the equipment is operated in a residential environment. This equipment generates, uses, and radiates radio frequency energy; and if it is not installed and used in accordance with the instruction manual, it may cause harmful interference to radio communications.

**WARNING** : Changes or modifications are not expressly approved by the manufacturer.

## **TROUBLESHOOTING**

---

Before sending your camera for repair, check the following or contact our technical specialist.

### **No VIDEO**

Check the coaxial cable and make sure it is connected securely.

Check the lens' iris adjustment at the menu setup of the camera.

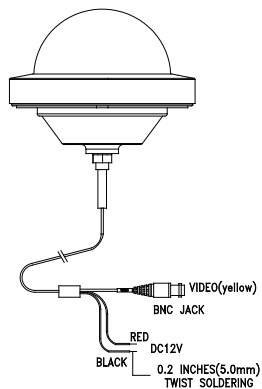
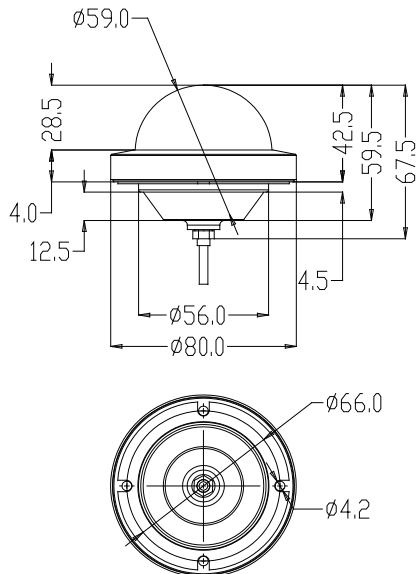
Check the power supply and make sure the camera has the proper voltage and current.

### **Out-of-Focus VIDEO**

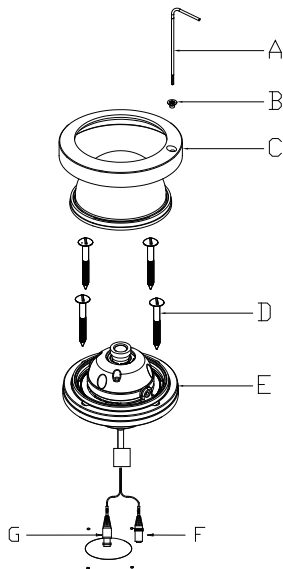
Check the clear dome cover and the lens for dirt or fingerprints. Use a soft cloth and gently clean.

Check the lens manual focal and zoom adjustment. Field test monitor is recommended.

## DIMENSIONS IN MILLIMETERS\*

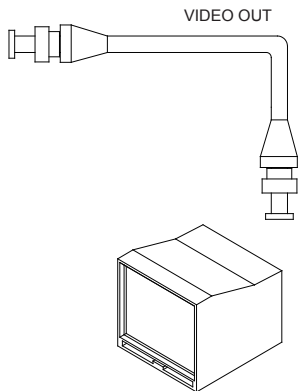
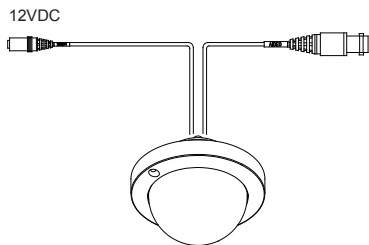


## INSTALLATION\*



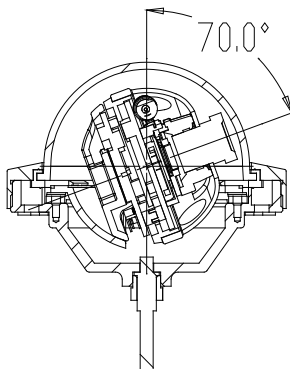
1. Remove the 1 STOP SCREW(B) on UPPER CASE(C), using the L-WRENCH(A).
2. Separate UPPER CASE(C) from BOTTOM CASE(E).
3. Make the 4 mounting screw holes on the ceiling/wall. The holes of BOTTOM CASE(E) can help locate the correct hole locations.
4. Put POWER CABLE(F) AND VIDEO CABLE(G) into the ceiling/wall.
5. Fix the BOTTOM CASE(E) onto the ceiling/wall, using the SCREWS(D)
6. Camera adjustment and setting.  
(Referance - "CAMERA SETTING")
7. Connect UPPER CASE(C) and BOTTOM CASE(E).
8. Tighten the STOP SCREW(B) on UPPER CASE(C), using the L-WRENCH(A).

## CONNECTIONS\*



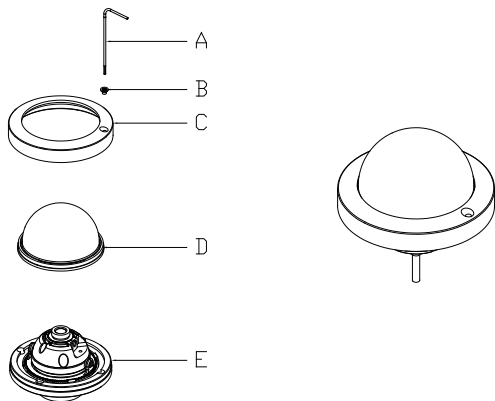
**CAUTION :**  
Check for polarity when using a DC 12V.

## LENS ADJUSTMENTS\*



Adjust the pan (360°) and tilt (70°) position.

## CAMERA SETTINGS\*



### Camera Position Adjustment :

- (1) Loosen the SCREW(B) on the UPPER CASE(C), using L-WRENCH(A).
- (2) Separate BOTTOM CASE(E) from UPPER CASE(C) by twisting UPPER CASE(C) to the right.
- (3) Separate CLEAR DOME(D) from BOTTOM CASE(E).
- (4) Fix the camera gimbal located in the BOTTOM CASE(E).
- (5) Assemble CLEAR DOME(D) and UPPER CASE(C) with BOTTOM CASE(E).
- (6) Tighten SCREW(B) onto UPPER CASE(C), using L-WRENCH(A).



## WARRANTY INFORMATION\*

**Digital Watchdog** (referred to as "the Warrantor") warrants Camera Series against defects in materials or workmanship as follows.

**LABOR** : For the initial five (5) years and one (1) year on LED from the date of original purchase, if the camera is determined to be defective, the Warrantor will repair or replace the unit, with new or refurbished product at its option, at no charge.

**PARTS** : In addition, the Warrantor will supply replacement parts for the initial five (5) years and one (1) year on LED.

To obtain warranty or out of warranty service, please contact a Technical Support Representative at **1-866-446-3595** Monday through Friday from 8:30AM to 8:00PM Eastern.

A purchase receipt or other proof of the original purchase date is required before warranty service is rendered. This warranty only covers failures due to defects in materials and workmanship which arise during normal use. This warranty does not cover damage that occurs in shipment or failures caused by products not supplied by the Warrantor or failures which result from accident, misuse, abuse, neglect, mishandling, misapplication, alteration, modification, faulty installation, set-up adjustments, improper antenna, inadequate signal pickup, maladjustment of consumer controls, improper operation, power line surge, improper voltage supply, lightning damage, rental use of the product or service by anyone other than an authorized repair facility or damage that is attributable to acts of God.

## LIMITS AND EXCLUSIONS\*

There are no express warranties except as listed above. The Warrantor will not be liable for incidental or consequential damages (including without limitation and damage to recording media) resulting from the use of these products, or arising out of any breach of the warranty. All express and implied warranties, including the warranties of merchantability and fitness for particular purpose, are limited to the applicable warranty period set forth above.

Some states do not allow the exclusion or limitation of incidental or consequential damages, or limitations on how long an implied warranty lasts, so the above exclusions or limitations may not apply to you. This warranty gives you specific legal rights, and you may also have other rights that vary from state to state.

If the problem is not handled to your satisfaction, then write to the Address listed on the back page.

Service calls which do not involve defective materials or workmanship as determined by the Warrantor in its sole discretion are not covered. Costs of such service calls are the responsibility of the purchaser.

B  
W  
W

## SPECIFICATIONS\*

<b>Specifications</b>		
<b>Model</b>	MC355T	
<b>Camera TYPE</b>	<b>Color</b>	<b>Vandal-Proof Micro Dome Camera</b>
	Mount	Surface
<b>Image</b>	Device	1/3" PIXIM
	Pixels-Total	742(H) x 552(V)
	Pixels-Effective	720(H) x 540(V)
<b>Scanning</b>	System	525 line, 2:1Interlace
	Horizontal Frequency Internal Mode	15,734Hz
	Vertical Frequency Internal Mode	59.94Hz
<b>Min. Scene Illumination</b>	F1.2	0.08 Lux, 0.01 Lux [TDN]
<b>WDR</b>	Wide Dynamic Range	120dB [Max]
<b>DIP Switch</b>	NTSC/PAL	ON / OFF
<b>Lens</b>	Length	3.6mm Fixed Lens
<b>Resolution</b>	Horizontal	480TV Lines [Color], 520TV Lines [B/W]
<b>Video Output</b>	VBS 1.0Vp-p	VBS 1.0Vp-p(75 Load)
<b>S/N Ratio</b>	S/N Ratio	48dB
<b>Environmental Conditions</b>	Operating Temperature	-10°C ~ +55°C(14°F ~ 131°F)
	Humidity	Less than 90%
<b>Power</b>	Power Requirement	12VDC
	Power Consumption	1.5W or Less
<b>Physical Specification</b>	Dimensions(φ x H)	80 X 59.5 mm (3.15 X 2.34 in)
	Nema Type	IP66
	Weight	255g (0.562 lbs)
<b>Certifications</b>	CE, FCC, RoHS	Certified



5436 W Crenshaw St. Tampa, FL 33634

Tel : 866-446-3595 / 813-888-9555

Fax : 813-888-9262

[www.Digital-Watchdog.com](http://www.Digital-Watchdog.com)

[technicalsupport@dwcc.tv](mailto:technicalsupport@dwcc.tv)

Technical Support Hours : Monday-Friday

8:30am to 8:00pm Eastern Time