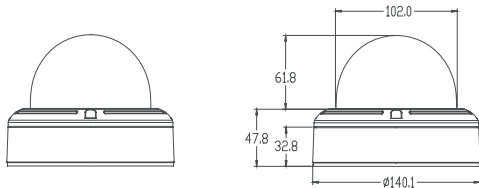


Vandal Dome V3367WTIR

WDR, 3D-DNR
True Day and Night – IR



Dimensions (Unit : mm)



Summary

The V3367WTIR Infinity DSP camera is the next generation of Digital Watchdog's popular V1363TIR. The V3367WTIR is a Vandal Resistant Dome Camera that ensures excellent color sensitivity and High Resolution in both Day and Night applications. This camera is the next generation of our Starlight Series (3D DNR) of products which offers extreme low light capability. During daytime operation, this camera produces a crisp 560TV line resolution color image. At night, the camera switches to black and white mode, removes the IR cut filter, and illuminates the scene up to 100 feet without added lighting. The V3367WTIR comes with a Wide Dynamic Range function which delivers excellent images under extreme back light conditions.

Features

- 1/3" Sony Super HAD II CCD
- 560 TV Line
- 3.3~ 12mm Varifocal Auto Iris Lens
- Easy Icon Driven OSD Menu with Built-in Joystick
- 70 Feet Range IR with Intelligent Camera Sync
- 3D-DNR (3D Digital Noise Reduction)
- WDR (Wide Dynamic Range)
- Star-Light (Super Low Light Technology)
- TDN (True Day and Night/TDN5)
- HME (Highlight Masking Exposure)
- Negative Imaging
- Secondary Video-BNC Output for Easy Installation
- Auto Sensing 24 VAC/12 VDC with Line Lock
- 32X Digital Zoom
- AGC (Auto Gain Control)
- BLC (Back Light Compensation)
- AWB (Auto White Balance)
- Mirror Image Control
- Programmable Privacy Zone (6) & Motion Detection
- Sharpness Control

Mechanical

- 3D Gimbal for Easy Control (360° Pan, 90° Tilt)
- IP 66 Certified (Weatherproof)
- Designed to Accommodate Junction Box Installation
- Wall & Ceiling Mount Bracket Sold Separately
- Video Test Output Cable Included



Accessories

- DWC- V1CM Pendant Mount Bracket for V1.V3 Housing
- DWC- V1CM-Pole-ADT Expendable Adapter for Pendant Mount
- DWC- V1CNM Corner Mount Bracket for V1,V3 Housing
- DWC- V1JUNC Junction Box for V1, V3 Housing
- DWC- V1WM Wall Mount Bracket for V1,V3 Housing



Specifications

Model	B1367WTIR
Image Sensor	1/3" Super HAD II CCD
Number of Pixels	811(H) x 508 (V), 411K pixels
Pixels-Effective	768(H) x 494(V)
Scanning System	NTSC 525 lines. 2:1 interlace
Horizontal Resolution	560 TV Lines [Color], 580 TV Lines [B/W]
Minimum Illumination	F1.2: 0.14 lux, x256 Starlight: 0.0005 lux in Color
IR Distance	70 feet range
Video Out	VBS 1.0Vp-p(75 ohm Load)
Video S/N Ratio	50dB or higher(AGC off)
Lens	Varifocal
	Auto Iris Lens 3.3-12mm
Shutter Speed	1/60s up to 1/100,000s
Gamma	0.45
Synchronizing System	Internal & External line lock
OSD	StarLight
	OFF - x256
	3D DNR
	OFF / LOW / MIDDLE / HIGH
	AWB
	ATW / AWC / MANUAL / PUSH
	Gamma
	USER / 0.45 / 0.6 / 1.0
	Motion Detection
	ON / OFF
	Mirror
	ON / MIRROR / V-FLIP / ROTATE
	Digital Zoom
	3X
	Negative Image
	ON / OFF
	Sharpness
	0 -49
	Privacy Zone
	6 Programmable Zones
	HME
	ON/OFF set level 0~60
	SLC
	ON/OFF set level 0~50
Operating Temperature	-10°C ~ +55°C (14°F ~ 131°F)
Storage Temperature	-20°C ~ +75°C
Humidity	Less than 90%
Power Requirement	12VDC / 24VAC (60Hz) /PoE
Power Consumption	DC12V:1.8[W], IR-On: 4.6[W] AC24V:2.4[W], IR-On: 4.9[W]
Dimensions	140.2 x 109.6mm
Nema Type	IP66
Weight (approx.)	2.0 lbs
Certification	CE, FCC, RoHS

