

Products: DWHVT's with internal Hard Drive Installed.

Problem: Improper shutdown can cause the hard drive and the DWHVT to fail

Solution:

1-UPS (Uninterruptable Power Supply) is highly recommended during the install

2- Before disconnecting the power of the DWHVT, the hard drive needs to be parked by logging in to the **Admin page**, you will now see the screen below (Fig.1), Click on the **Restart** button at the main Menu. Click on the **Detach** button to park the hard drive and a message will be displayed stating that it is now safe to remove the drive from the server (Fig.2). Once you see this message it is safe to disconnect the power source and shutdown the DWHVT.

Fig.1

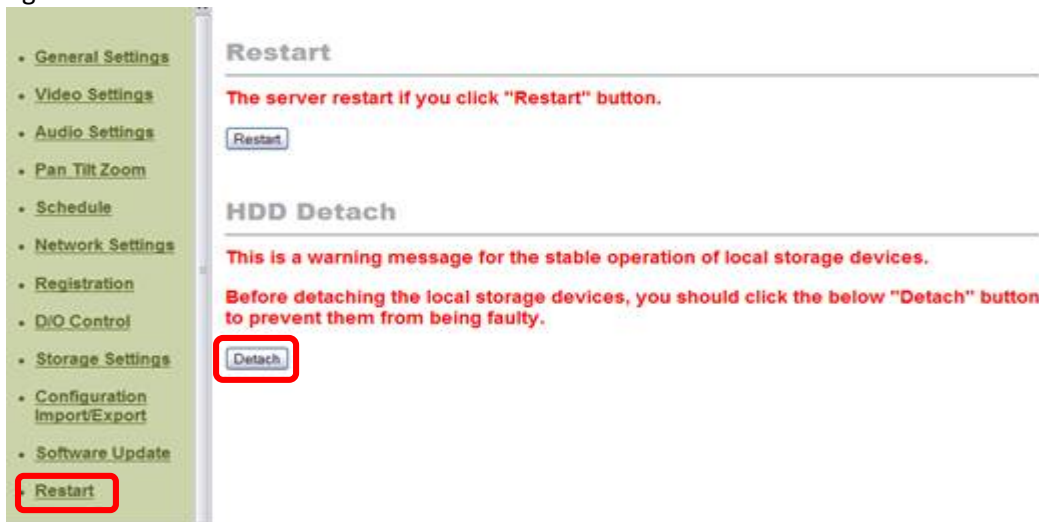


Fig.2

