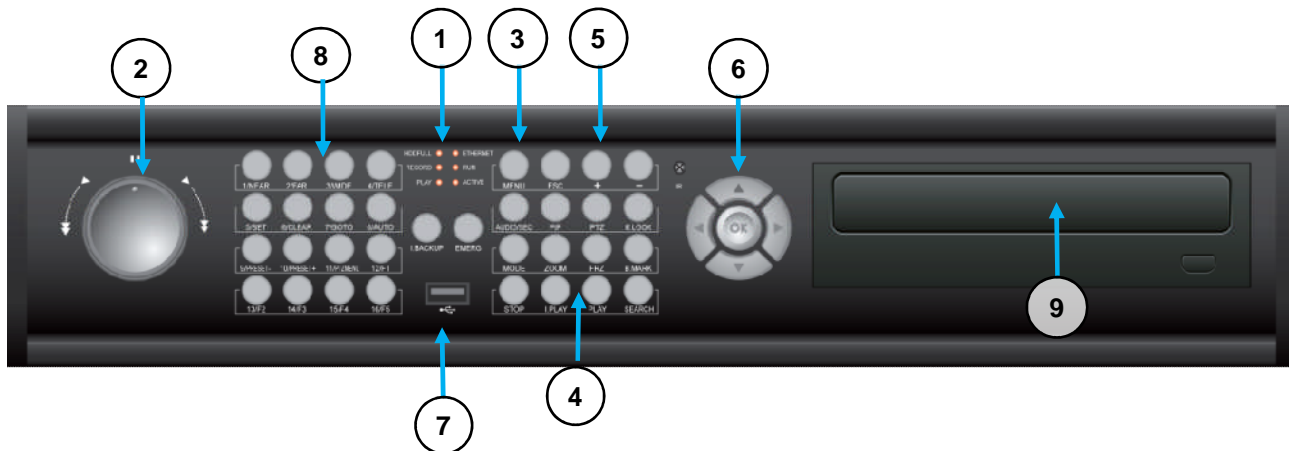
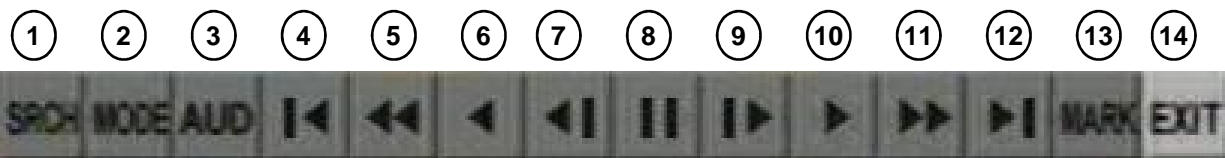


Front Panel Controls



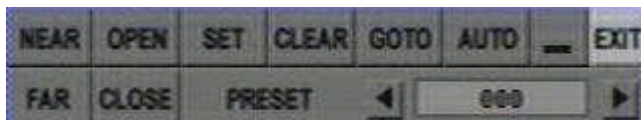
1	[LEDs] Status of Operation
2	[Jog Shuttle] Pause, Direction, Playback Speed control
3-1	[Menu] setup (No Password)
3-2	[PANIC] Continuous record at 30IPS, Super fine
3-3	[BOOKMARK] bookmark event for later playback
3-4	[PLAY] Video Playback
3-5	[I.PLAY] Instant Backward Playback from the Hard Drive
3-6	[I-BACKUP] Instant backup during the playback (5 minutes Max)
3-7	[AUDIO] Select audio play channel (1,2,3,4 and MUTE)
3-8	[K-LOCK] Front Panel Key-Lock. To Unlock press and hold for few seconds
3-9	[SEARCH] Playback Search from the Hard Drive
3-10	[STOP] To stop playback and exit Playback mode
4-1	[PTZ] PTZ Control
4-2	[MODE] Select Display Screen (1,4,9,16 or Sequence)
4-3	[FRZ] Freeze Live Display
4-4	[SEQ] Automatic Screen sequence
4-5	[ZOOM] Video display Zoom (Digital zoom)
5-1	[ESC] Cancel selected Menu Setup
5-2	[+] Increase programming setting
5-3	[-] Decrease programming setting
6	Arrow Buttons. to navigate the Menu Setup
7	USB Port. USB Backup or Firmware Update
8-1	[PTZ Control] Select the PTZ camera in the full screen mode
8-2	[NEAR] Focus Near
8-3	[FAR] Focus far
8-4	[WIDE] Zoom-In
8-5	[TELE] Zoom-In
8-6	[SET] Preset Programming
8-7	[CLEAR] Preset Clear
8-8	[GOTO] To Select the Preset
8-9	[AUTO] Auto Preset Scan
9	[Optical Drive] CD or DVD-ROM Backup

Mouse Menu Setup



1	Search Recorded Video for Playback	9	Playback
2	Select Display Mode (1,9,16Channels)	10	frame by frame playback
3	Audio Channel selection (1,2,3,4 and MUTE)	11	fast forward Playback
4	Select the beginning of the playback	12	Select the end of recorded video
5	Increase reverse playback speed	13	Bookmark. Select ad save in playback mode
6	Reverse frame by frame Playback	14	Exit Playback Mode
7	Reverse Playback		
8	Pause Playback		

PTZ CAMERA CONTROL



OPEN	OPEN the Lens IRIS	SET	SET PRESET
CLOSE	CLOSE the Lens IRIS	CLEAR	CLEAR PRESET
WIDE	ZOOM OUT	GOTO	GO TO PRESET
TELE	ZOOM IN	AUTO	AUTO SCAN
NEAR	FOCUS NEAR	Arrow	PAN / TILT
FAR	FOCUS FAR	PRESET	PRESET No.

NETWORK Setup

1) Main Menu Setup



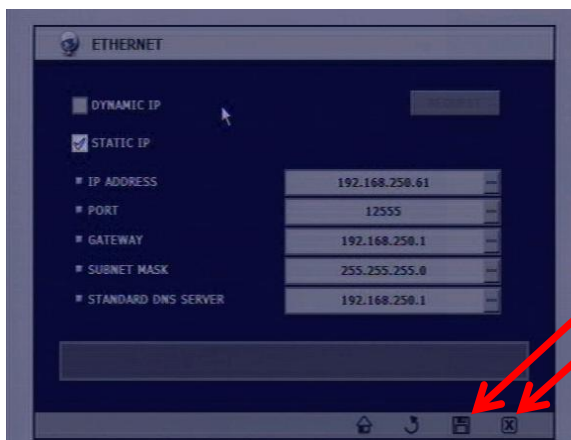
NETWORK Setup

- Select Network to setup the Network connection

Note:

Note: Ports to be forwarded can be found within the ETHERNET and WEB GUARD menus.
Default: TCP – 12555
WEB – 80

2) ETHERNET Setup



To Setup the DVR Network.

- Select [DYNAMIC] and press [REQUEST]. This does 2 things: Retrieves an IP address and confirms communication with the router.
- Now select [STATIC IP] and press [SAVE] (Static IP is recommended in most applications)

Click [X] box to Exit the Setup.

3) DDNS Setup

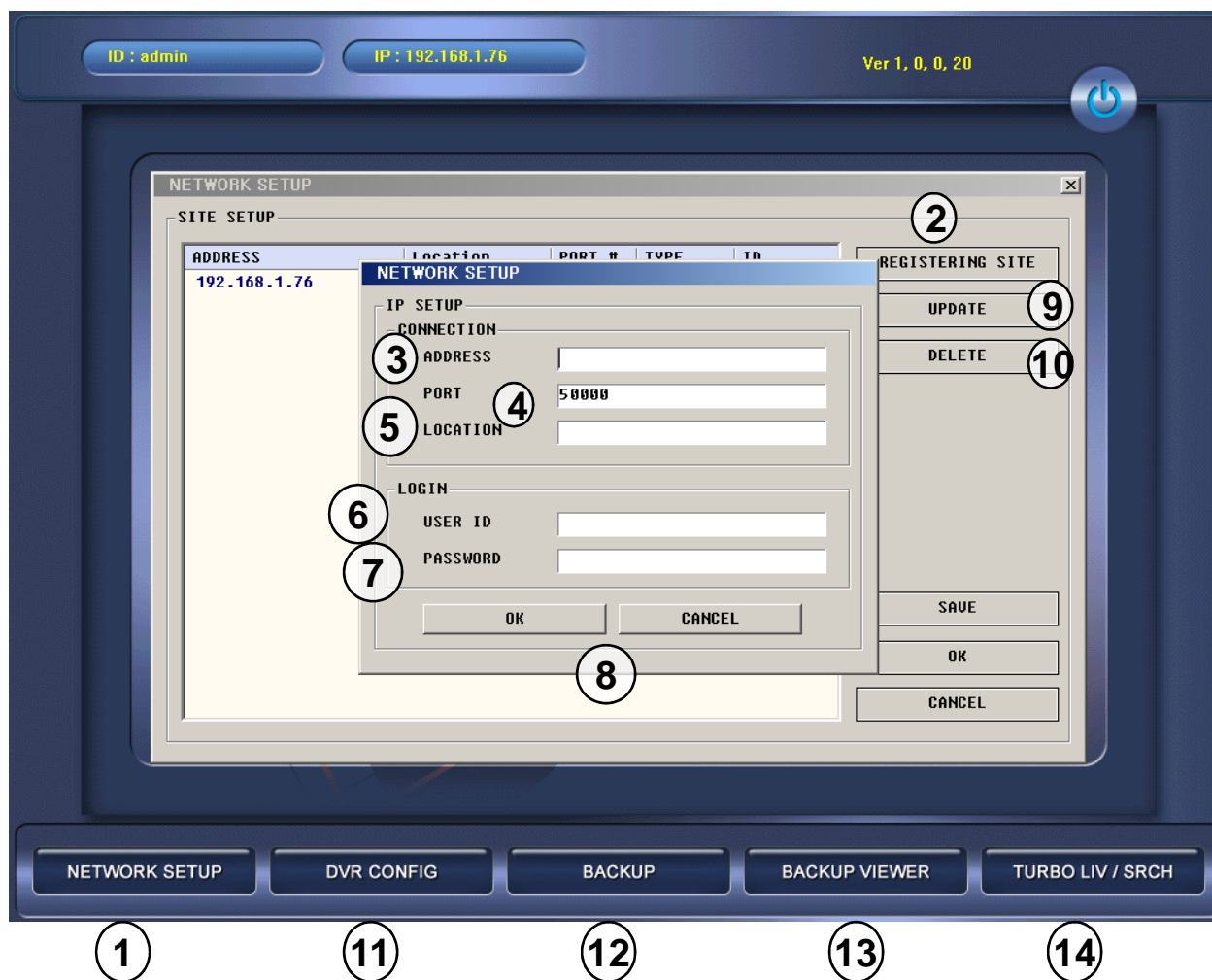


To Setup DDNS Server Connection.

- Check the [DDNS] box
- **DDNS SERVER ADDRESS:** www.nvrddns.com
- **DVR NAME :** This will be the name to register on the DDNS server. Make sure the name is unique.
- Click REQUEST Box to connect to DDNS Server and register the DVR
The **LAST UPDATE** should reflect current date and time.
- **INTERVAL:** How often the DVR information is updated to the DDNS SERVER.
- Click Save box to save the settings.
- Click EXIT to cancel.

• To connect the DVR open your web browser and type DVR_NAME.nvrddns.com

Remote Connection Setup



1	[NETWORK SETUP] Click to Setup the DVR IP,PORT, User ID and Password
2	[REGISTERING SITE] to Setup DVR IP Address, Port, User Id and Password
3	[ADDRESS] IP Address of the DVR
4	[PORT] Port number of the DVR
5	[LOCATION] Location of the DVR(Not required)
6	[USER ID] Admin or Manager
7	[PASSWORD] Password of the DVR(Same Password for Menu Setup of the DVR)
8	[OK & SAVE] Click OK and SAVE the setting
9	[UPDATE] Click to Modify the selected site
10	[DELETE] Click to Delete the selected site
11	[DVR CONFIG] Click to enter the DVR Setup menu
12	[BACKUP] Click Backup to record video to your PC Hard Drive
13	[BACKUP VIEWER] Click to Playback USB or CD-R/DVD-R backup from the DVR
14	[TURBO LIV/SRCH] Click to access live Viewer or Playback Search