

VMAX A1

Record All Analog Cameras to 960H, AHD and TVI Cameras

4 Channel Models	8 Channel Models	16 Channel Models
DW-VAONE 41TB	DW-VAONE 81TB	DW-VAONE 162TB
DW-VAONE 42TB	DW-VAONE 82TB	DW-VAONE 163TB
DW-VAONE 43TB	DW-VAONE 83TB	DW-VAONE 164TB
DW-VAONE 44TB	DW-VAONE 84TB	DW-VAONE 166TB
DW-VAONE 46TB	DW-VAONE 86TB	DW-VAONE 168TB
		DW-VAONE 1612TB



Username: **admin** Password: **no password**

WHAT'S IN THE BOX

CD (QSG + Manual + Software)		1 Set	12V D/C Adaptor		1 Set
Quick Start Guide		1 Set	USB Mouse		1 Set
IR Remote Control		1 Set	Screws (Top Cover) - 4pcs		1 Set

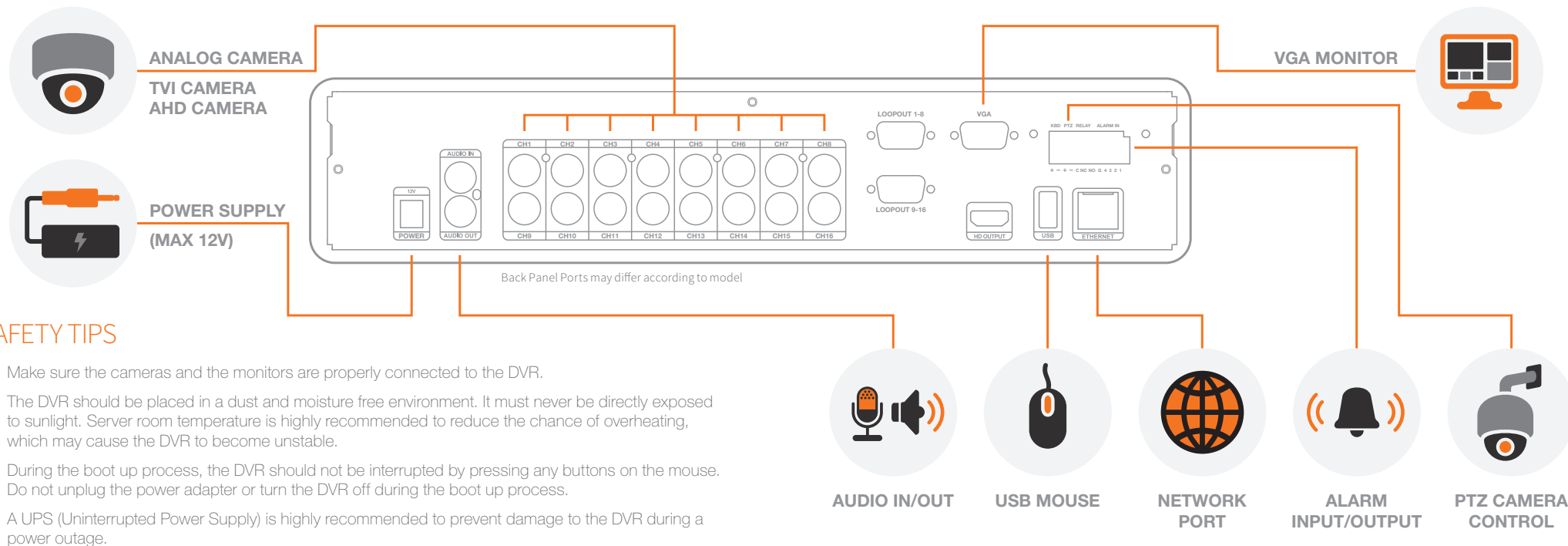
Attention: This document is intended to serve as a quick reference page for initial set-up. It is recommended that the user read the entire instruction manual for complete and proper DVR usage.

VMAX A1 All-in-One DVR

NOTE: The VMAX A1 is compatible with all 960H and below resolution analog cameras, AHD and TVI HD formats (1080p via Coax) resolutions.

Step 1 – CONNECTING THE DVR

1. Mount and install all necessary cameras and external devices. Refer to their individual manuals for additional information.
2. Place the DVR in its final position. See installation tips below.
3. Connect all necessary cables to the DVR
4. Once all additional devices have been properly connected to the DVR, connect the DVR to an appropriate power supply. The DVR will boot up automatically.
5. When connecting multiple cameras with different signals, cameras must be combined in pairs. For example, connect 960H cameras to CH1 + CH2, connect AHD 1080p cameras to CH3 + CH4, connect TVI cameras to CH5 + CH6 etc.

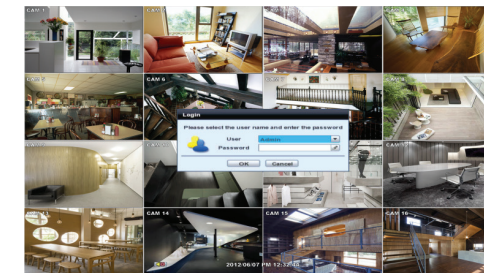


SAFETY TIPS

1. Make sure the cameras and the monitors are properly connected to the DVR.
2. The DVR should be placed in a dust and moisture free environment. It must never be directly exposed to sunlight. Server room temperature is highly recommended to reduce the chance of overheating, which may cause the DVR to become unstable.
3. During the boot up process, the DVR should not be interrupted by pressing any buttons on the mouse. Do not unplug the power adaptor or turn the DVR off during the boot up process.
4. A UPS (Uninterrupted Power Supply) is highly recommended to prevent damage to the DVR during a power outage.

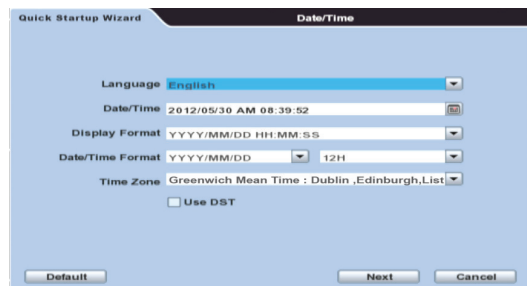
Step 2 – POWERING UP THE DVR

1. When the DVR boots up, it will be in protective mode. This means you will not be able to access the DVR's setup menu until you enter the proper username and password.
2. To unlock the DVR, right-click anywhere on the screen. The login screen will appear. (Default Username / Password: admin / no password)
3. When the DVR boots up for the first time, you will be guided through the Startup Wizard.

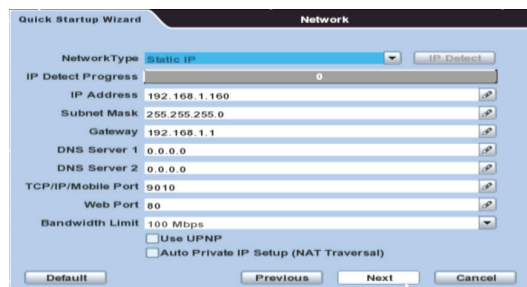


Step 3 – STARTUP WIZARD

- Follow the startup wizard's instructions to setup the DVR's basic settings, including date and time setup, network setup and quick recording setup. At any time you can exit the wizard and setup the DVR manually. It is recommended to setup the date and time for the DVR the first time you access it.
 - Click on the pencil icon next to the Date/Time to enter edit mode.
 - Select the proper display format from the [DATE/TIME FORMAT] drop down lists.
 - Select the appropriate date and local time in the [DATE/TIME] section.
 - Select the appropriate time zone from the [TIME ZONE] drop down list.
 - If applicable, enable Daylight Savings mode.



- Set the DVR's network settings to match your network's requirements. It is recommended to set the network type to DHCP and let the DVR auto-detect the network's settings, then change the type to Static. Please contact your Network Administrator for additional information.



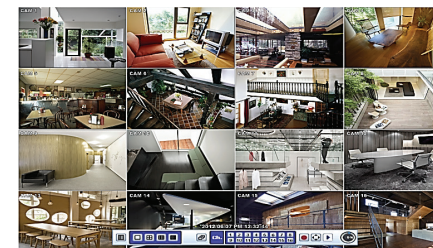
- The Quick Setup menu option allows you to easily setup all your cameras' recording resolution, frame rate, mode and recording periods. To use the Quick Setup option, check the box 'Use Quick Setup' to enable. There are two configuration options:
 - Input Desired Days – Enter the number of days you wish to record before the local storage gets full or overrides itself. The recording parameters under Recording settings will adjust automatically to allow for your desired number of recording days.
 - Record Settings – Manually enter the resolution, frame rate, recording mode and quality from the drop-down options. The system will instantly update the 'Days to Record' section, showing how many estimated recording days will result from the settings set above. These recording settings will apply to all cameras registered with the DVR. To manually setup different recordings for each camera or recording schedule, disable the Quick Setup menu and go to the RECORD setup menu..



Step 4 – MONITOR YOUR SYSTEM

- NAVIGATION – use the included USB mouse to navigate around the DVR's monitoring and Setup pages.

- To access the MENU BAR – move the mouse's cursor to the bottom of the display area to show the menu bar.
- To access the QUICK MENU OPTIONS – Right-click anywhere on the screen. This will take you to the quick menu options, which include:
 - Display Mode Options
 - Start / Stop Sequence View
 - Freeze / Unfreeze Live Image
 - Start / Stop Panic Recording
 - Playback and Search Options
 - Access the Backup Menu Page
 - Access the Main Menu Page
 - Shut Down the System
 - Log off Current User



- HELP – For your convenience, the HELP button located at the bottom right of setup screens includes basic information and explanation of the features and settings in that page, for on-the-go information.

Step 5 – REMOTE MONITORING

DDNS Setup

The DDNS address provides your DVR a URL address, easier to remember than an IP address. This is a free feature supported by Digital Watchdog for its customers.

- Go to the Network setup menu, and select the 'DDNS' tab.
- Check USE DDNS to enable. (Make sure the DVR's web port has been properly setup in your router.)
- Select dwddns2.net (default).
- Enter a name for your DVR and click the CHECK button. If the name is available, the system will display the following message: "THIS DVR NAME CAN BE USED". Click SAVE to save all changes.
- To use your DDNS, open an Internet Explorer page and enter the DDNS in the address bar: DVRname.dwddns2.net:port-number. (Example: http://vmaxa1.dwddns2.net:80)

