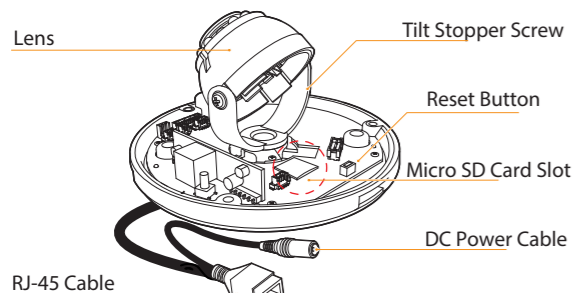


MEGAPIX
DWC-MF21M4TIR
DWC-MF21M8TIR
DWC-MF21M28T
IP 2.1MP Low Profile Vandal Dome IR Camera
Quick Setup Guide



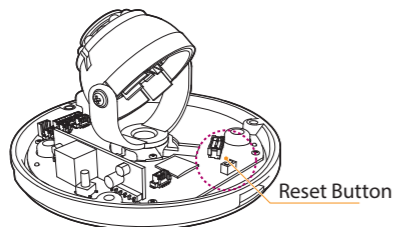
Parts and Description



Resetting the Camera

Pressing the reset button on the camera's control board for five (5) seconds will initialize all environmental variables to factory default. Previous setup for IP default, time, etcetera will be deleted. If a system IP address is lost, reset the camera back to factory default. The following are the default network settings:

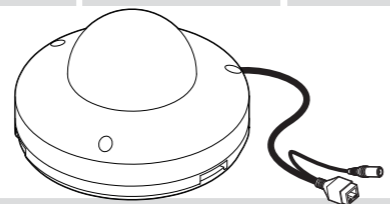
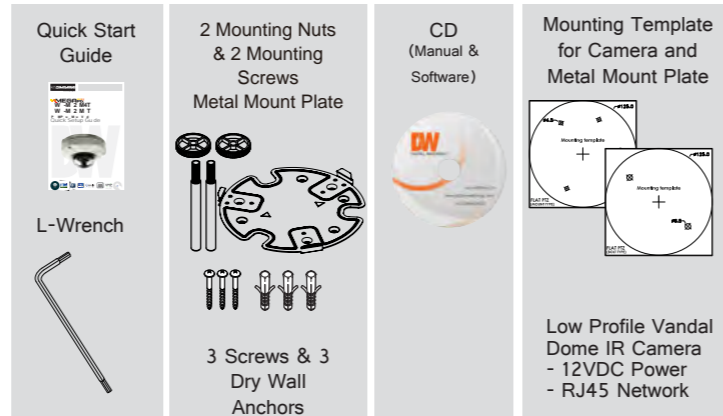
| | |
|--------------|---------------|
| IP Mode | DHCP |
| IP Address | 192.168.1.123 |
| Subnet Mask | 255.255.255.0 |
| Gateway | 192.168.1.123 |
| Command Port | 7000 |
| HTTP Port | 80 |
| Live Port | 7001 |



Frequent use may cause a System Error

PREPARATION

The following items are included with your MEGAPIX Camera



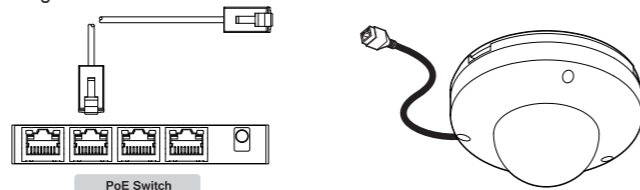
Thank you for purchasing Digital Watchdog's MEGAPIX Flat Vandal Dome Camera. Before installing the camera, please verify your model and read this guide carefully.

Network Connection

There are two options.*

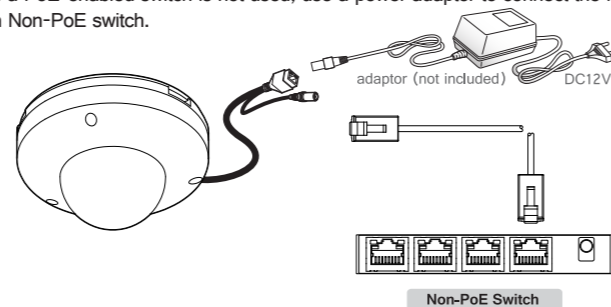
1 Using a PoE-Enabled Switch

The MEGAPIX Camera is PoE-compliant, allowing transmission of power and data via a single ethernet cable. Follow the illustrations below to connect the camera to a PoE-enabled switch using an ethernet cable.



2 Using a Non-PoE Switch

If a PoE-enabled switch is not used, use a power adaptor to connect the MEGAPIX Camera to a Non-PoE switch.



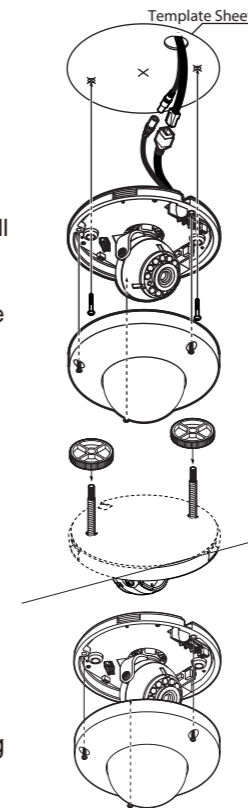
INSTALLATION

Easy Camera Installation

1. Detach the camera's cover dome from the camera's module by unscrewing the three cover dome screws using the L-Wrench.
2. Use the camera or mounting template to mark and drill the necessary holes in the wall or ceiling.
3. Pull wires through and make connections.
4. Using three (3) included screws mount and secure the camera to the wall or ceiling.
5. Secure the camera's cover dome onto the camera base to complete the installation.

Installation Using Mount Bolt & Nut

1. Detach the camera's cover dome from the camera's module by unscrewing the three cover dome screws.
2. Using the camera or mounting template, mark and drill the necessary holes in the wall or ceiling.
3. Secure the two long mounting screws to the camera's base.
4. Pull wires through and make connections.
5. Mount the camera to the mounting surface using the 2 mounting nuts.
6. Secure the camera's cover dome onto the camera base to complete the installation.



INSTALLATION

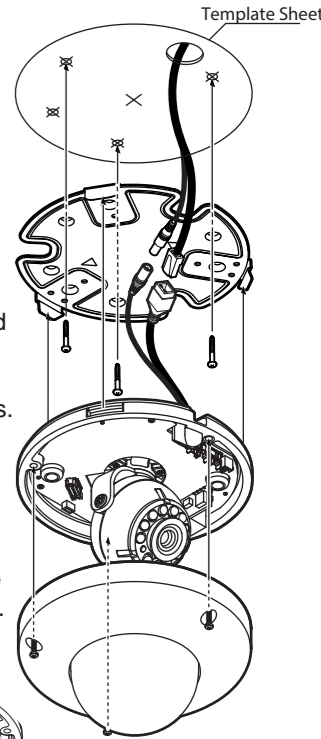
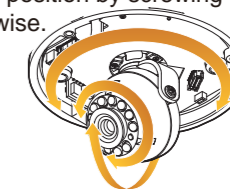
Installation Using Mount Plate

1. Detach the camera's cover dome from the camera's module by unscrewing the three cover dome screws.
2. Using the metal mount plate, mark and drill the necessary holes in the wall or ceiling.
3. Pull wires through and make connections.
4. Using the three (3) included screws, mount and secure the camera to the wall or ceiling.
5. Attach the camera base to the metal mount by snapping it into place using the two metal handles.
6. Secure the camera's cover dome onto the camera base to complete the installation.

Adjusting the Camera's Angle

To adjust the camera's orientation:

1. Loosen the tilt stopper screw at the base of the camera's Gimbals by rotating it counter clock-wise.
2. Move the camera to the desired angle.
3. Secure the camera's lens position by screwing the tilt stopper screw clock-wise.



Recommended Settings

Camera Default Color Settings

Please refer to the table below for the default camera settings. You can reset the camera's settings to its default color settings by pressing the 'Default' button at the bottom of the screen.

| | |
|----------------------------|--------|
| White Balance | |
| Mode | Auto |
| Manual Exposure | |
| Brightness | 10 |
| Shutter Mode | Auto |
| Digital Slow Shutter | Off |
| AGC Gain | 41dB |
| WDR/BLC/HLC Mode | Off |
| Day & Night | |
| Mode | Auto |
| Switching from Color to BW | 10 |
| Switching from BW to Color | 10 |
| Extra Setting | |
| Frequency | 60Hz |
| Defog | Off |
| IR LED Mode | Active |
| LED Saturation | 2 |
| Chroma | 10 |
| Sharpness | 5 |
| Mirror | Off |
| Flip | Off |
| Digital Noise Reduction | Middle |

SPECIFICATIONS

Camera Specifications

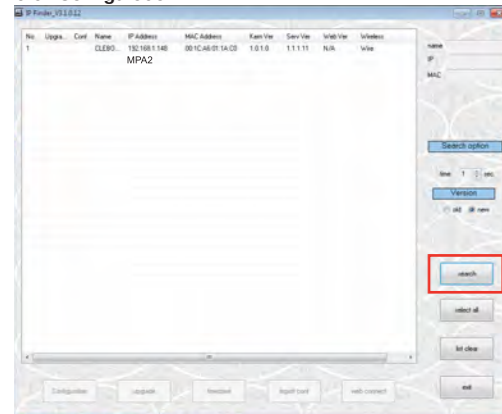
| | |
|---------------------------------|---|
| IMAGE | |
| Image Sensor | 1/2.8" Sony CMOS Sensor |
| LENS | |
| Focal Length | 2.8mm [DWC-MF21M28T] 4.0mm [DWC-MF21M4TIR] 8.0mm [DWC-MF21M8TIR] |
| Lens Type | Fixed Lens |
| IR Distance | 30ft Range IR [IR models Only] |
| NETWORK | |
| LAN | 802.3 Compliance 10/100 LAN |
| Video Compression Type | H.264, MPEG4, MJPEG (Super Fine-Low) |
| Resolution | 1920X1080 (16:9) ~ 320X240 (4:3) |
| Frame Rate | Up to 30fps at A1 Resolutions |
| Streaming Capability | Dual-Stream at Different Rates and Resolutions |
| IP | IPv4, IPv6 |
| Maximum User Access | 5 Users |
| Web Viewer | OS: Windows XP / Vista / 7, MAC OS Browser: Internet Explorer, Chrome, Firefox, Safari |
| Video Management Software | DW Spectrum |
| Memory Slot | 24 hours recording to Micro SDHC Card (4GB-32GB) Card Not Included* |
| ENVIRONMENTAL | |
| Operating Temperature/ Humidity | -10°C ~ 50°C (14°F ~ 122°F), Less than 90% Humidity |
| IP Rating | IP66 (Protects against dust and high pressure water) |
| ELECTRICAL | |
| Power Requirement | DC 12V, PoE (IEEE802.3af Class 2) |
| Power Consumption | 3.6W, 300mA / LED ON: 4.3W, 360mA |
| MECHANICAL | |
| Material | Aluminum Housing |
| Dimensions | 125 x 74.3 mm (4.9 X 2.9 in) |
| Weight | 1.0 lbs |

MEGApix CAMERA SETUP

Installing IP Finder

IP Finder searches for all the available network devices on your local area network.

1. Install **IP Finder** to find your MEGApix Camera on the local Network. The **IP Finder** software is on the included mini-CD. Run **IP Finder** and install onto your PC.
2. When setup is complete, launch the **IP Finder** software.
3. To find your MEGApix camera, click **Search** button. Your MEGApix camera will appear as DWC-MF21M4TIR, DWC-MF21M8TIR, or DWC-MF21M28T.
4. To access the camera directly via Internet Explorer, select the desired device and click **Web Connect**.
5. To change basic network settings through the IP Finder software, select the desired device and click **Configuration**.



Setting the Camera on IP Finder

Set the Camera for Internal Use

- If you wish to connect your MEGApix Camera internally from within the same network:
1. Find your MEGApix Camera on IP Finder software and click **Configuration**.
 2. Select an IP Configuration Mode - **DHCP**, **PPPoE**, or **Static** - that is available to you. Recommended Setting is **DHCP**.*
 3. If you wish to use **DDNS**, select the **Use DDNS** option.
 4. When the setup is complete, select **Apply**.
 5. Then, select **Reboot** button. The rebooting process usually takes up to a minute.
 6. Select **Exit**.
 7. On the IP Finder window, select **Search** and confirm that your changes have been made.

Set the Camera for External Use

- If you wish to connect your MEGApix Camera to an external network, please use Static IP.
1. Find your MEGApix Camera on IP Finder software and click **Configuration**.
 2. Select **Static IP Configuration Mode**.
 3. If you wish to use **DDNS**, select the **Use DDNS** option. See page 10 for further information.
 4. When the setup is complete, select **Apply**.
 5. Then, select **Reboot** button. The rebooting process usually takes up to a minute.
 6. Select **Exit**.
 7. On the IP Finder window, select **Search** and confirm that your changes have been made.

Setting the Camera on IP Finder

User can use the IP Finder software to setup the basic network settings.



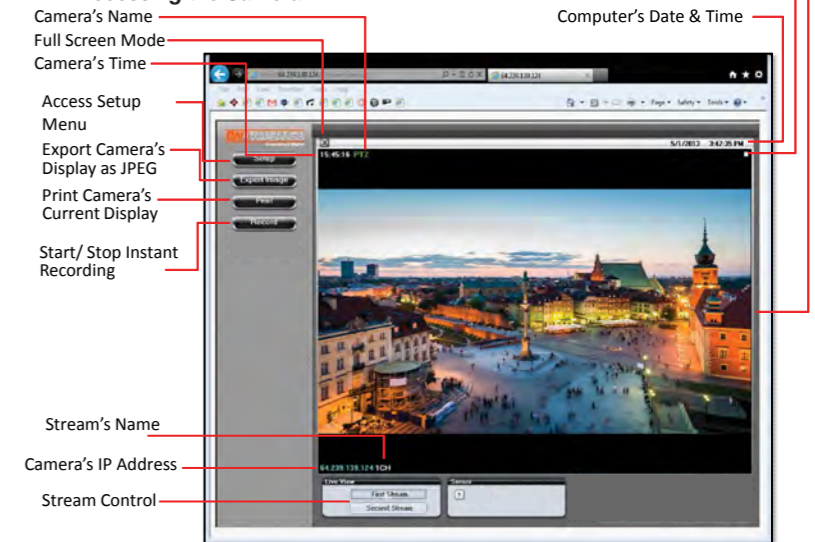
1. **DHCP:** If DHCP is selected, an IP address will automatically be assigned to the camera. If your network does not support DHCP, a default IP address and subnet mask will automatically be assigned.
2. **PPPoE:** Select this option, when you use WAN service or a PPPoE-based internet service. Contact your Internet Service Provider for a User ID and Password.*
3. **Static IP:** This option will assign a static (fixed) IP to your camera. A static IP address will prevent the network from changing the camera's IP address and make it easier to access, especially when the camera is on a large network and accessed by multiple users. Contact your Internet Service Provider for more information.*
4. **Use DDNS:** Check this option to use DDNS (Dynamic DNS). DDNS allows users to setup a unique URL for the IP camera. To use DDNS, you must register for a DDNS ID from a DDNS Hosting Service.*
5. **Port:** This section displays all the port numbers that are required for remote communication.

Webviewer Specifications

| Minimum Requirements for PC | |
|-----------------------------|--------------------------------------|
| CPU | Intel P4 2.0GHz Dual Core |
| RAM | More than 1GB |
| HDD | 200GB Required for Saving Clip Image |
| OS | Microsoft Windows XP or Higher |
| Resolution | Higher than 1024X768 |

Accessing the Camera

Accessing the Camera

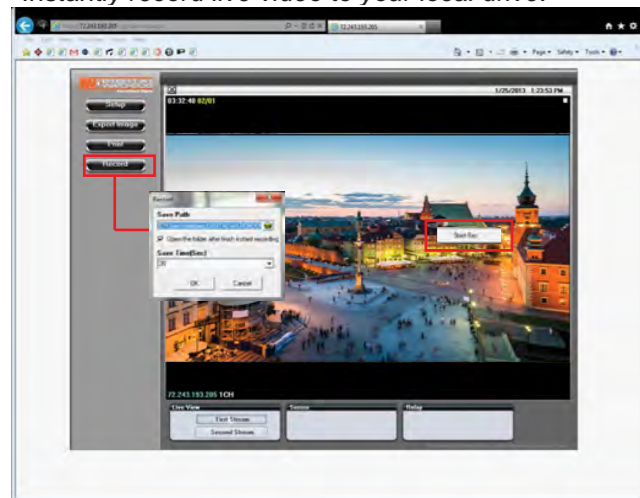


1. Enter the IP address of the camera on the Internet Explorer window. **http://192.168.1.123** (Factory Default)
2. Enter Username and Password. Default Username: admin Default Password: admin
3. The web browser will ask to install Active-X Control. Once it has been installed, Internet Explorer will display video images from the camera.

The web viewer can also be accessed via Google Chrome, Firefox Mozilla and Safari if one of the streams is set to MJPEG

Instant Recording

Instantly record live video to your local drive.



To Setup Instant Recording

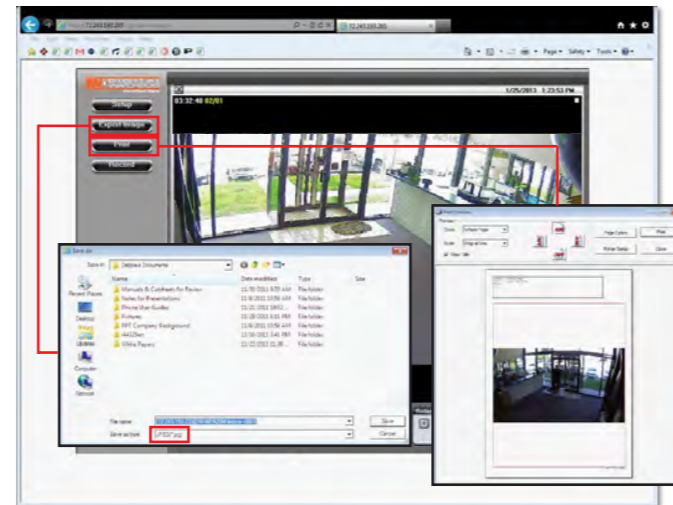
Select the **Record** button and Indicate where you want the videos to be saved. Setup the duration of the instant recording. You can record up to 120 seconds of live video. When setup is complete, click **OK** to save changes.

To Start and Stop Instant Recording

To Start, right-click anywhere on the display screen. Select **Start Rec**. The icon on the top right of the screen will change to **INSTANT**.

To Stop, right-click anywhere on the display screen. Select **Stop Rec**. The video will be displayed in the designated folder when recording is complete.

Export & Print



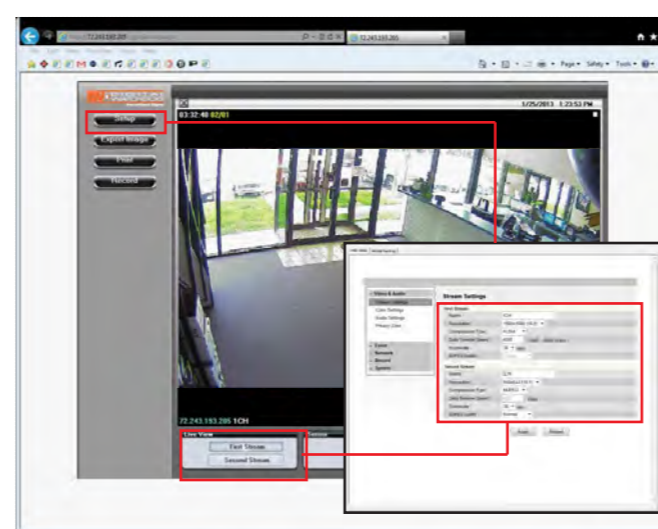
To Export an Image:

1. Select the **Export Image** button. A 'Save As' window will appear.
2. Select the folder you wish to Save in and type a File Name.

To Print an Image:

1. Select the **Print** button. The **Print Preview** window will appear.
2. Adjust the orientation of the screenshot.
3. Zoom in on a portion of an image prior to printing or select the image's scale on the page.
4. To print information about the screenshot, select **View Title**.
5. To add a memo for the screenshot, select **Page Option**.
6. Go to **Printer Setup** to select the printer and manage printer properties. Select **Print** to print the page.

First Stream & Second Stream



Configure two different stream settings (**First Stream** and **Second Stream**) for monitoring and recording. **Second Stream** is used to record on Motion Detection and the SD card local backup.

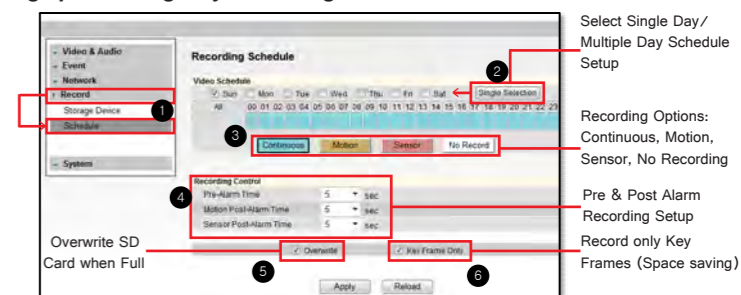
1. Click **Setup** to adjust the two available stream settings. The two streams can differ in Resolution, Compression Type, Data Transfer Speed, and Framerate.
2. On the main monitoring page, click **First Stream** button to view the camera with the First Stream settings, and click **Second Stream** button to view the camera with the Second Stream settings.

Stream settings are disabled if accessing the camera from the DW Spectrum software.

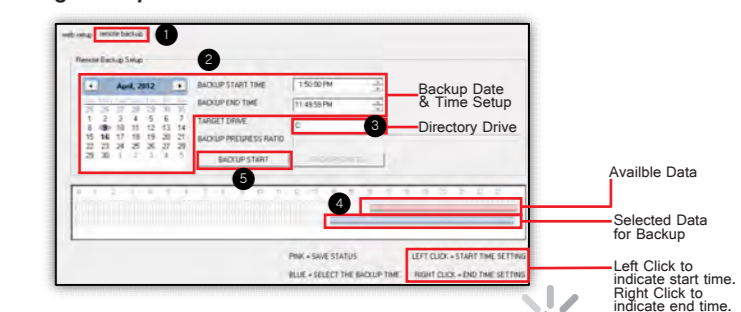
SD Card Installation & Setup

The MEGApix cameras offer local backup in case of network loss.

Setting up an Emergency Recording Schedule:



Exporting Backup Data from the SD Card:



SD card is for Recording Loss emergency recording.