

MEGAPIX MPTZ5XFM

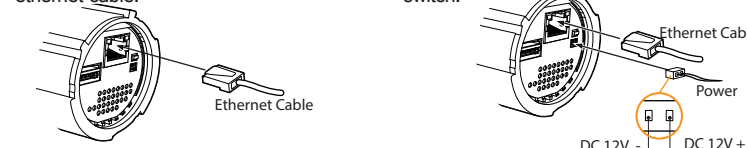
IP 2.1M Pan, Tilt, Zoom Flush Mount Camera Quick Setup Guide



Network Connection

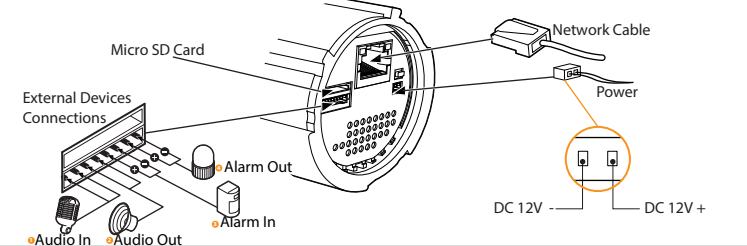
PoE-Enabled Network Switch
Transmit power & data via a single ethernet cable.

Non-PoE Network Switch
Use a power adaptor if using a Non-PoE switch.



Camera External Devices Connection

The MEGAPIX camera supports relay connections & micro SD Card.



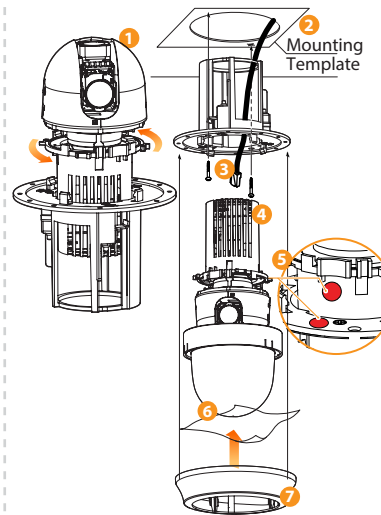
TEL: (866) 446-3595
www.Digital-Watchdog.com / technicalsupport@dwcc.tv
Technical Support Hours: Monday-Friday 9:00AM to 8:00PM EST

PREPARATION

The following items are included with the MPTZ5XFM Camera

Quick Start Guide		DC Power Cable		Audio & Alarm Cable	
CD (Manual & Software)		Decorative Ring - Black, White, & Ivory Colors			
Mounting Template for Camera & Metal Plate				PTZ 5X IP Flush Mount Camera	
2 Screws & Dry Wall Anchors					

INSTALLATION



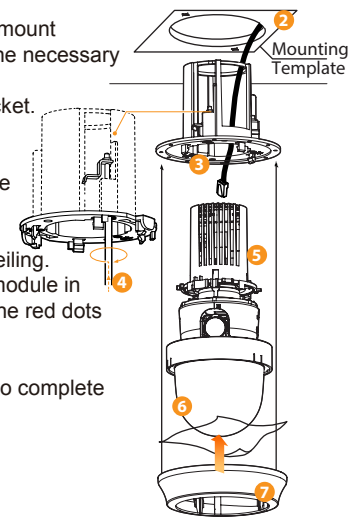
1. Detach the camera from the flush mount by rotating the camera counter clock-wise and pulling.
2. Use mounting template and drill holes.
3. Pull wires through Flush Mount Bracket. Using screws, secure the Flush Mount.
4. Connect cables and insert the camera module into the bracket.
5. Turn the camera module clock-wise, aligning the red dots on the body and flush mount.
6. Attach the camera's bubble dome.
7. Snap into place one of the Deco-Rings to complete the installation.

* Mounting surface must sustain five (5) times the camera's weight.

INSTALLATION

Installation using Hooks

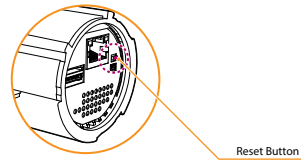
1. Remove camera module from the flush mount bracket. Use mounting template and drill the necessary holes.
2. Pull wires through the Flush Mount Bracket.
3. Insert the flush mount bracket into the mounting ceiling or wall.
4. Push and turn the head screw clock-wise using a Philips driver. The hook's head should grab onto the ceiling's inside side. Make sure flush mount is secured to the ceiling.
5. Connect cables and insert the camera module in the bracket, turning it clock-wise, to align the red dots on the body & flush mount to lock in place.
6. Attach the camera's bubble dome.
7. Snap into place one of the Deco-Rings to complete the installation.



Resetting the Camera

Pressing the camera's reset button for five (5) seconds will set all variables to factory default. The table below represents the camera's default network settings:
Warning: Pressing the 'Reset' button will lead to all setting data to be erased. You can export the settings directly from the camera. See the full manual for more information.

IP Mode	DHCP
IP Address	192.168.1.123
Subnet Mask	255.255.255.0
Gateway	192.168.1.123
Command Port	7000
HTTP Port	80
Live Port	7001



Frequent use may cause a System Error

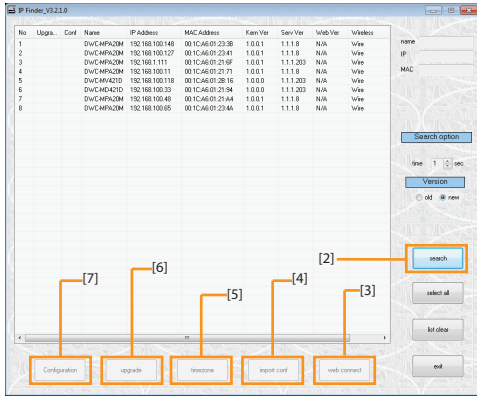
Webviewer Specifications

CPU	Intel P4 2.0GHz Dual Core
RAM	More than 1GB
HDD	200GB Required for Saving Clip Image
OS	Microsoft Windows XP or Higher
Resolution	Higher than 1024X768

Installing IP Finder

IP Finder searches for all the available network devices on your local area network.

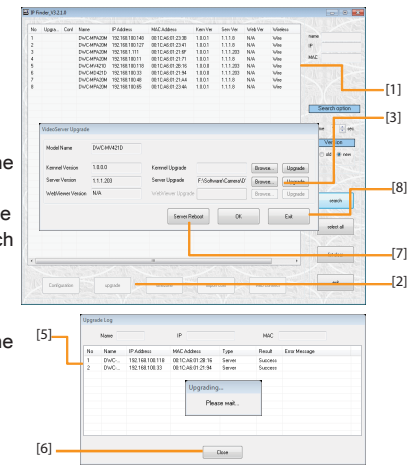
1. Install IP Finder software & click 'Search' to find all MEGAPIX cameras in the network.
2. To access the camera via the web browser, select the device and click Web Connect.
3. To import camera settings, press import conf.
4. To adjust the camera's date & time, press the timezone.
5. Click Upgrade to update the camera's firmware.
6. To setup the camera's network settings, click Configuration.



Upgrading the Camera's Firmware

Firmware upgrade to multiple MEGAPIX cameras simultaneously.

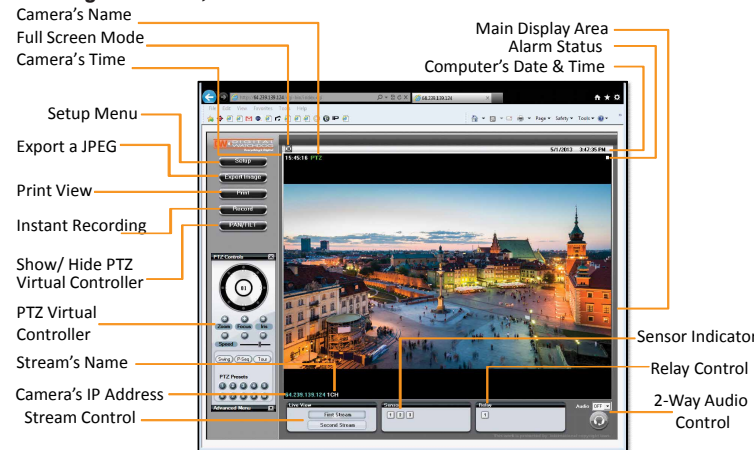
1. Select all the cameras to upgrade. Select multiple cameras by holding down the Ctrl button.
2. Press the 'Upgrade' button.
3. Browse and select the appropriate file. Press the 'OK' button.
4. The system will start updating all the selected cameras in a new window.
5. The system will indicate whether the upgrade was successful or not for each camera.
6. When the upgrade process is complete, press the 'Close' button.
7. To complete the upgrade, reboot the cameras by pressing 'server reboot'.
8. Press the 'Exit' button.
9. Allow up to 60 seconds for the cameras to reboot and press 'Search' to rediscovers the camera.



MEGAPIX CAMERA SETUP

Accessing the Camera

Monitor & configure the MEGApix camera through a built-in webviewer. For Google Chrome, Firefox Mozilla & Safari set stream to MJPEG.

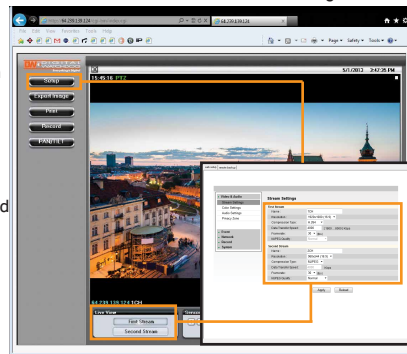


First Stream & Second Stream

Configure two different stream settings (First Stream and Second Stream) for monitoring and recording. Second Stream is used to record on Motion Detection and the SD card local backup.

- Click **Setup** to adjust the two available stream settings: **First Stream** and **Second Stream**. The two streams can differ in Resolution, Compression Type, Data Transfer Speed, and Framerate.
- On the main monitoring page, a user can view the camera with the **First Stream** settings or the **Second Stream** Settings.
- Below the display screen, click the **First Stream** button to view the camera with the First Stream settings, and click the **Second Stream** button to view the camera with the Second Stream settings.

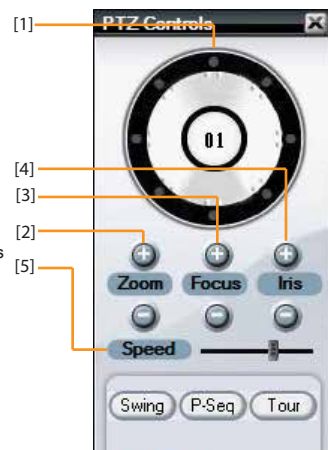
NOTE: If the camera is viewed and managed via the DW Spectrum IPVMS, the camera's first and second stream settings will be automatically set by the software unless specified otherwise.



Accessing the Camera

Controlling the Camera Using the Virtual Joystick

- Pan Tilt Wheel**- Move the camera in eight (8) directions by clicking and holding with your mouse's left button on the corresponding button. Pressing the central upper button will move the camera UP. To stop the camera's movement, release the mouse' click.
- Zoom Control Button**- Press the '+' to make the camera zoom into the center of the image. Press '-' to make the camera zoom out to the full field of view.
- Focus Control Button**- Not Applicable for this model.
- Iris Control Button**- Not Applicable for this model.
- Speed Control Button**- Move the speed bar to the left to reduce the camera's speed. Move the speed bar to the right to increase the camera's speed.



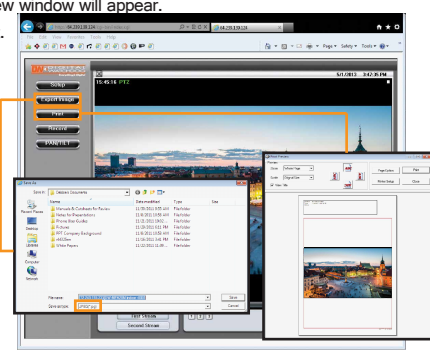
Export & Print

To Export an Image:

- Select the **Export Image** button. A 'Save As' window will appear.
- Select the folder you wish to Save in and type a File Name.
- Click 'Save' and the screenshot will be saved.*

To Print an Image

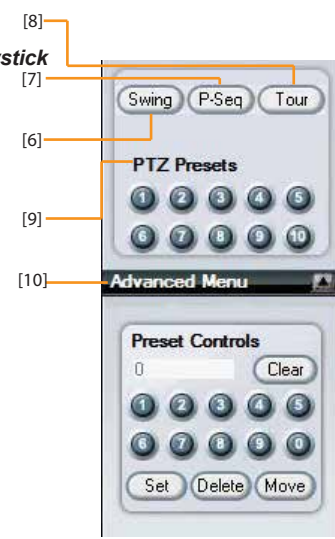
- Select the **Print** button. The Print Preview window will appear.
- Adjust the orientation of the screenshot.
- Zoom in on a portion of an image prior to printing or select the image's scale on the page.
- To print information about the screenshot, select **View Title**.
- To add a memo for the screenshot, select **Page Option**.
- Go to **Printer Setup** to select the printer and manage printer properties.
- Select **Print** to print the page.



Accessing the Camera

Controlling the Camera Using Virtual Joystick

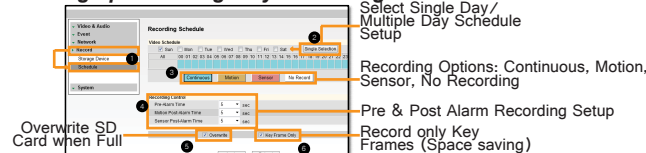
- Swing Button**- Start and stop any of the previously set Swing commands.
- P-Seq Button**- Start and stop any previously set Preset Sequence commands.
- Tour Button**- Start and stop any of the previously set tour commands.
- Presets buttons**- Send the camera to a specific preset previously setup. To activate presets higher than 10, expand the **Advanced Menu** option and use the numeric buttons to select a preset.
- Advanced Menu**- Preset Controls-Use the **Advanced Menu** to delete, set and move presets from the camera's main display window.



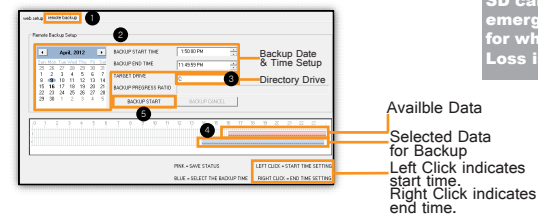
SD Card Installation & Setup

The MEGApix cameras offer local backup in case of network loss.

Setting up an Emergency Recording Schedule:



Exporting Backup Data from the SD Card:



SD card is set as emergency recording for when network loss is detected.

Instant Recording

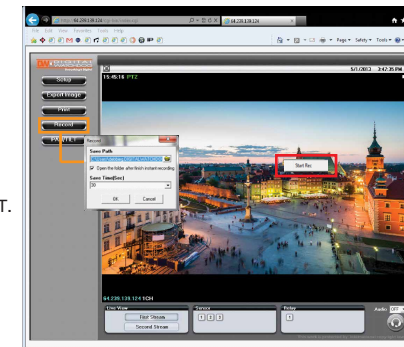
Instantly record live video to your local drive.

Setup Instant Recording

- Select the **Record** button.
- Indicate where you want the videos to be saved.
- Setup the duration of the instant recording. You can record up to 120 seconds of live video.
- When setup is complete, click **OK** to save changes or **Cancel** to cancel any changes.

Start & Stop Recording

- To **Start**, right-click anywhere on the display screen.
- Select **Start Rec**. The icon on the top right of the screen will change to **INSTANT**.
- To **Stop**, right-click anywhere on the display screen.
- Select **Stop Rec**. The video will be displayed in the designated folder when recording is complete.



Camera Specifications

TECHNICAL	
Minimum Scene Illumination	F3.5 (50IRE): 0.1 Lux [Color] / 0.01 Lux [B&W]
Focal Length	5~25mm, F3.5 - F3.7
Digital Zoom / Optical Zoom	12X / 6X
Sensor In/ Out	1 In/ 1 Out
Alarm Input / Output	1 Line In and 1 Line Out Mono
Pan Tilt Zoom	
Range & Speed	350° Pan, 90° Tilt, Max Speed: 120°/ sec
Preset	255
Sequence	4
Swing	8, 1.4"~180°/Sec
Tour	8 (Max 20 Entries Per Tour)
NETWORK	
Video Compression Type	H.264, MPEG4, MJPEG
Resolution & Frame Rate	1920X1080 , Up to 30fps at All Resolutions
Maximum User Access	5 Users
Web Viewer	OS: Windows XP / Vista / 7, MAC OS Browser: Internet Explorer, Chrome, Firefox, Safari
ELECTRICAL	
Power Requirement	DC12V, PoE (IEEE802.3af Class 3), Max 700mA
Power Consumption	PTZ Idle: 5W, 430mA/ PTZ in Action: 8W, 670mA
MECHANICAL	
Dimensions & Weight	110 x 149.2 mm, 4.33 X 5.87 in, 0.8 lbs