

MEGAPIX MV950TIR

IP 5MP Vandal Dome Camera

Quick Setup Guide



PREPARATION

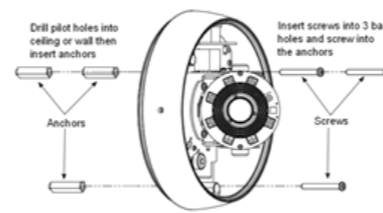
The following items are included with the MV950TIR Camera

Quick Start Guide		CD (Manual & Software)	
L-Wrench		Waterproof Accessories & Power Outlet Adaptor	
2nd Video Output Adapter		DC Cable Adapter	
2x Drying Agent- Silica Gel Packet		Mounting Template	
		3x Mounting Screws and Wall Anchors	
		Vandal Dome Camera	

Thank you for purchasing Digital Watchdog's MEGAPIX IP Vandal Dome Camera. Before installing the camera, please verify your model and read this guide carefully.

INSTALLATION

Mounting the Camera



- Using the camera base or the mounting template, mark and drill 3 pilot holes and insert anchors. Use screws to affix the camera base to the ceiling or wall.
- Pull all necessary wires through and use the diagram on page 2 of this QSG to make all proper cable connections.



- Adjust the camera lens using tilt & swivel controls as needed. Use the Zoom and Focus handles to adjust the camera's lens.
- After adjusting lens, remove a drying agent pack from one of the silver packages stored inside the accessories package*. Remove the sticker from the drying agent pack and insert in the front under the lens as shown in the image*.

*The drying agent pack should be replaced each time the camera is opened (front or back). Be sure to complete all work before inserting drying agent pack & replacing the cover. Drying agent packs will become ineffective if exposed to open air for more than 10 minutes.

INSTALLATION

BNC 2nd Video Output



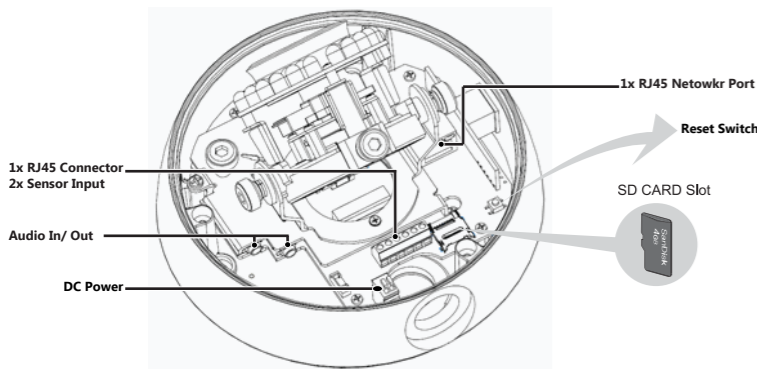
The camera can provide video out via BNC cable. The BNC cable provided has a 2 pin plug. When connecting the BNC cable for SDTV video out, connect the BNC cable to pin 3 & 4 as shown in the image above.

IR Sync. Function



If using an external IR trigger, then connect the external IR device to the camera's 2-pin IR Sync port.

Additional Cabling Connections



Resetting the Camera

Pressing the reset button on the camera's control board, while the camera is on, for six (6) seconds will initialize all environmental variables to factory default. Previous setup for IP default, time, etc. will be reversed to its factory default values. The following are the default network settings:

IP Mode	DHCP
IP Address	192.168.1.2
Subnet Mask	255.255.255.0
Gateway	192.168.1.1
RTP Video Port	6002
HTTP Port	80
RTSP Port	554

Frequent use may cause a System Error

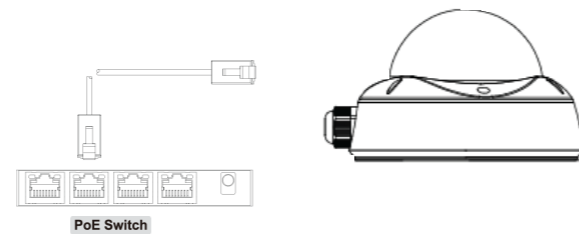


Network Connection

There are two options.*

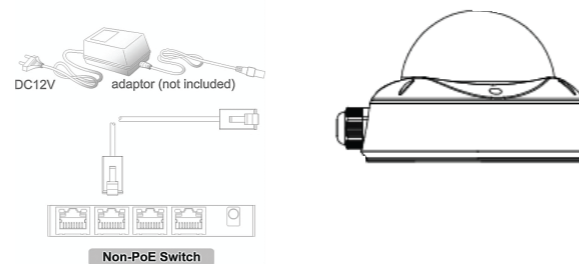
- Using a PoE-Enabled Switch

The MEGAPIX Camera is PoE-compliant, allowing transmission of power and data via a single ethernet cable. Follow the illustrations below to connect the camera to a PoE-enabled switch using an ethernet cable.



- Using a Non-PoE Switch

If a PoE-enabled switch is not used, use a power adaptor to connect the MEGAPIX Camera to a Non-PoE switch.



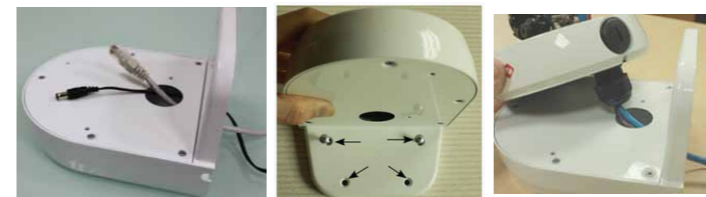
Mounting the Camera

Water Resistant Accessories



- Prepare conduit, and slide necessary cables through tubing. After subsequent cabling is done, insert tubing into A and screw C on to A.

Wall Mount Bracket



- Run all necessary cables through the bracket before securing the bracket to the wall.
- Mount the Wall Mount to the wall using the mounting template or the bracket itself.
- Secure the camera housing to bracket and secure by tightening the screws; be sure to pass cabling into hole in the camera housing.

Camera Specifications

IMAGE	
Image Sensor	1/2.5" 5MP CMOS Sensor
Total Pixels	2592 (H) X 1920 (V)
Minimum Scene Illumination	0.0 Lux
LENS	
Focal Length	3.4-10mm
Lens Type	Varifocal/ DC- Iris
IR Distance	50ft Range IR
Angle of View	Horizontal: 40 (wide) - 25 (tele)
AUDIO	
Compression and Sampling Rate	G.711/ G.726/ AAC
Input / Output	Built-in Microphone, 1x Line In and 1x Line Out
NETWORK	
DW Optimized Firmware	Full Firmware Option
LAN	802.3af Compliance
Video Compression Type	H.264
Resolution	10fps @ 2560x1920 (5MP) / 10fps@2592x1920(5MP) / 20fps@2048x1536(3MP) / 30fps@1920 x1080(2MP)
Frame Rate	Up to 10fps / Up to 30fps based on Resolution
Streaming Capability	Dual-Stream at Different Rates and Resolutions
IP	IPv4, IPv6
Protocol	TCP/IP, HTTP, DHCP, PPPoE, HTTPS, ICMP, ARP, RTSP, NTP, UDP, SMTP, RTP, RTCP, 3GPP, SAMBA (NAS)
Maximum User Access	10 Users
ONVIF Conformance	Yes, Profile S
Web Viewer	OS: Windows XP / Vista / 7, MAC OS Browser: I.E. 8 or Higher, Chrome, Firefox, Safari
Video Management Software	DW Spectrum
Memory Slot	Micro SDHC Card (4GB-32GB) Card Not Included*
ENVIRONMENTAL	
Operating Temperature/ Humidity	-25°C - 55°C (-13°F - 131°F)
Operating Humidity	Less than 80% (Non-Condensing)
Storage Temperature	-29°C - 55°C (-20°F - 131°F)
IP Rating	IP66 (Protects against dust and high pressure water)
Other Certifications	CE, FCC, RoHS
ELECTRICAL	
Power Requirement	DC 8-25V, AC 24V, PoE (IEEE802.3af Class 3)
Power Consumption	Max 8.9W, 600mA
MECHANICAL	
Material	Aluminum Housing
Dimensions	152 X 98 mm (5.98 X 3.85 in)
Weight	2.42 lbs

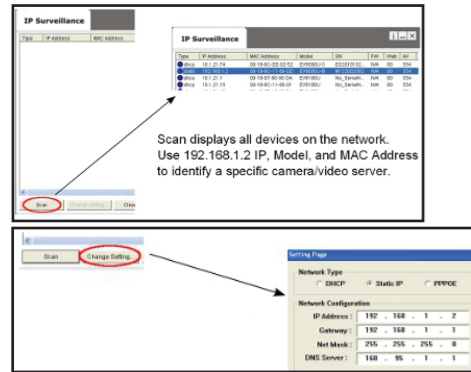
*Specification is subject to change without prior notice.

MEGAPIX CAMERA SETUP

Installing DWScan

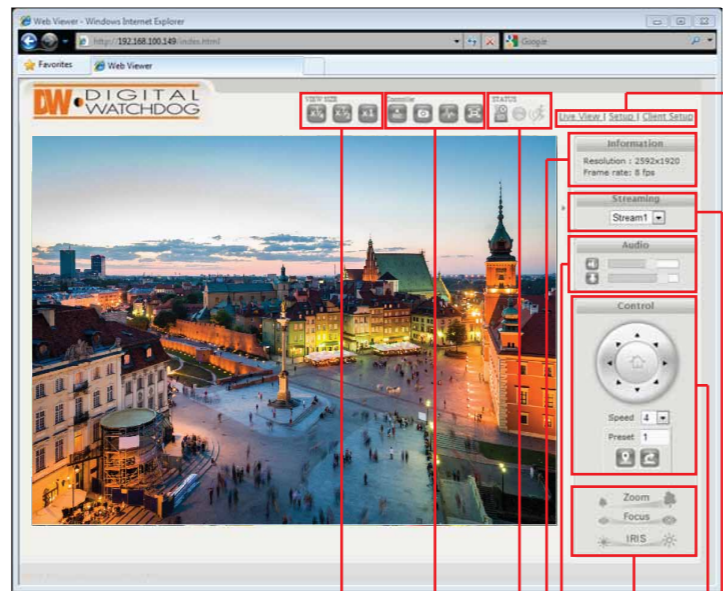
DWScan searches for all the available supported network devices on your local area network.

1. Install DWScan to find the MB950TIR Cameras on the local network. The DWScan software can be found on the included CD. Run DWScan and install onto your PC.
2. When setup is complete, launch the DWScan software.
3. To find your MB950TIR cameras, click the Scan button.
4. You can use the DWScan software to adjust the camera's IP Address and Network Settings
5. To change the camera's Network Settings, press the Change Settings button.



Accessing the Camera

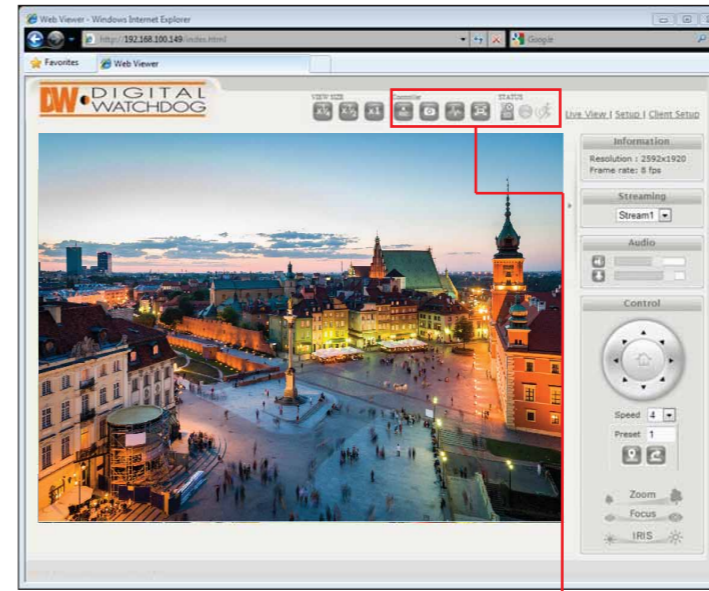
Web Viewer Interface



- Video Display Size
- Video Controllers
- Alarm Indicators
- Video Resolution & FPS Information
- Audio Controllers
- Lens Controllers
- PTZ Virtual Controller
- Stream Selection
- Live/ Setup/ Client Setup Access

Relay Input and Alarm Output Control

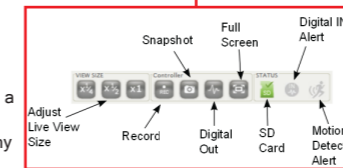
Remote Video Monitoring



Use the camera's control bar and status indicators to manage the camera's relay and alarm inputs and outputs.

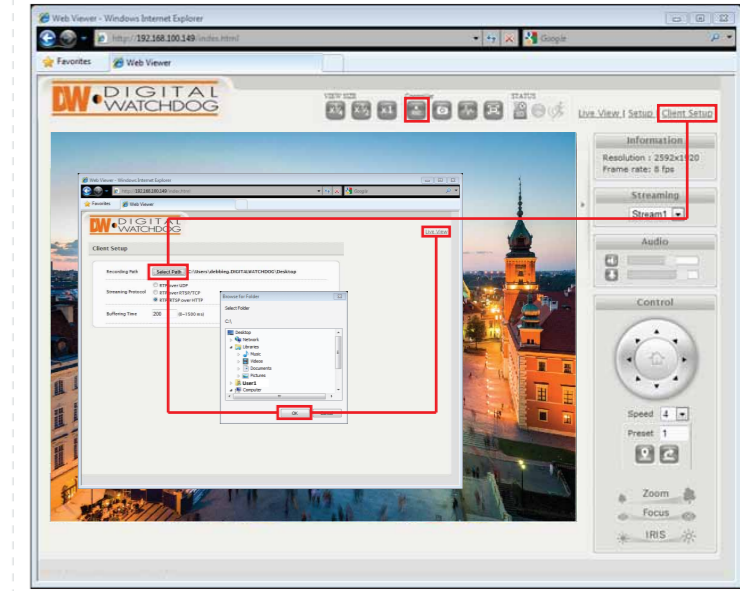
- Digital IN Alert will blink to notify you when a relay connected to the camera is triggered.
- Use the Digital Out button to start/ stop any alarm output connected to the camera.

Refer to the full manual for more information on how to setup relay input and output control in the camera.



Instant Recording

Instantly record live video to your local drive.



To Setup Instant Recording

Make sure the directory path is setup. To do so go to Client Settings at the top right-hand corner of the screen and press 'Select Path'

To Start and Stop Instant Recording

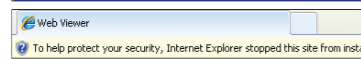
To Start, press the icon on the control menu bar. A window will appear to notify you instant recording has begun. The button will blink red indicating you are currently recording video. To Stop, press the button again. The video file will appear in the designated directory path.

Accessing the Camera Using its Web Browser

For advanced setup and camera view, access the camera using its built-in web server.

When accessing an IP camera using the web interface for the first time (or when the IP address changes), some configuration for ActiveX controls are required.

1. Open an IE browser
2. Type in the IP address in the URL: http://<IP ADDRESS> (e.g. http://10.1.21.53).
3. Default Username and Password: root/ pass.
4. Pop-up windows and messages for download/run Active X controls (examples below) will likely be displayed. Select Install or Run to all such messages. Click on the add-on message and choose Run Add-on.



5. Repeat the above until all ActiveX controls have been initiated. Once the process is complete, the Live View will be displayed in IE.
6. When all Active X files have been properly installed, the web viewer will display the camera's live video and control center.

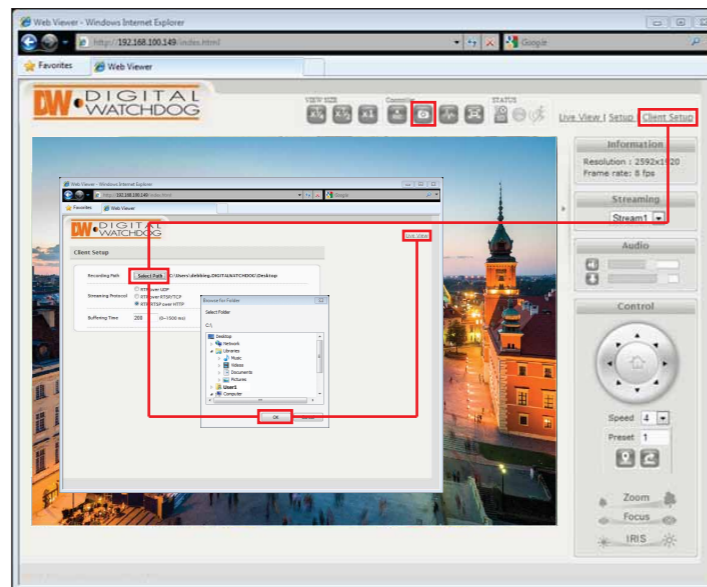
The web viewer can also be accessed via Firefox and Google Chrome if QuickTime player is installed.

Webviewer Specifications

Minimum Requirements for PC

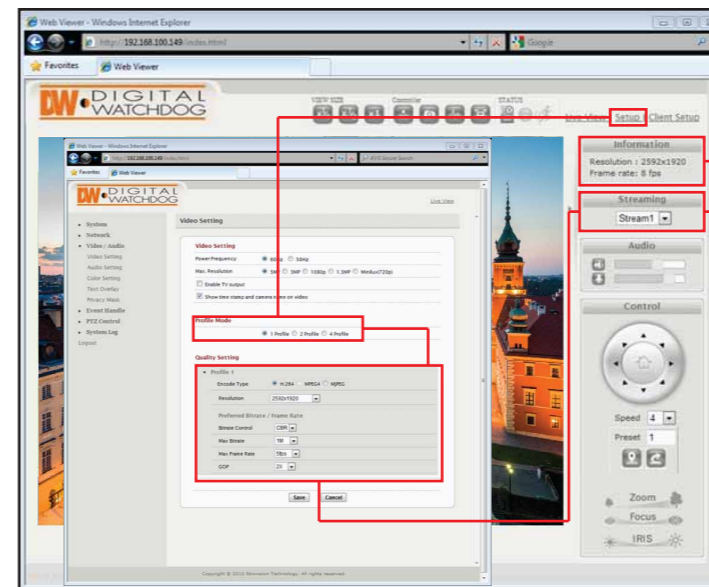
CPU	Intel P4 2.0GHz Dual Core
RAM	More than 1GB
HDD	200GB Required for Saving Clip Image
OS	Microsoft Windows XP or Higher
Resolution	Higher than 1024X768

Export Image



1. Make sure the directory path has been setup. To do so:
 - a. Go to Client Settings at the top right-hand corner of the screen.
 - b. Press 'Select Path' to select the directory where all exported images will be saved to. Settings will be saved automatically.
 - c. Click on the 'Live View' link at the top right-hand corner of the screen to return to the camera's live display.
2. To export an image of the camera's current live view, press the button at the top control bar. An image with time stamp will automatically be saved as a JPEG file.

Stream Setup and Selection



The MB950TIR supports multiple simultaneous streams (up to 4 different profiles). The Streams can be switched from the camera's web viewer by selecting the corresponding stream from the drop down menu in the Stream Control option. The stream's current resolution and framerate information will be displayed in the information section.

To setup the different streams:

- a. Go to 'Setup' at the top right-hand corner of the screen. The setup menu will appear.
- b. Go to Video/Audio > Video Settings
- c. Select the number of profiles you would like to assign the camera.
- d. All selected profiles will appear under the Quality Setting Section. Here you can modify each streams' resolution, codec, bitrate, and max framerate.
- e. Press 'Save' to save all settings.

SD Card Installation & Setup

The MB950TIR supports local storage recording as well as remote FTP and NAS recording. All recording settings can be done by pressing 'Setup' in the upper right-hand corner of the screen.

