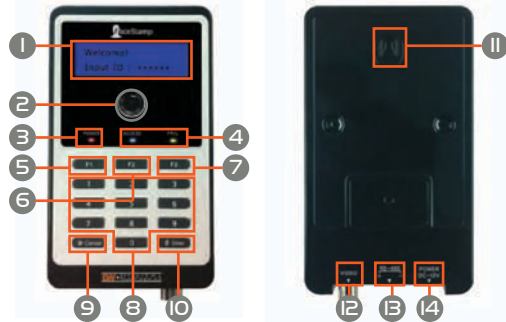




Please note that the accessory kit and shipping box contain the following items

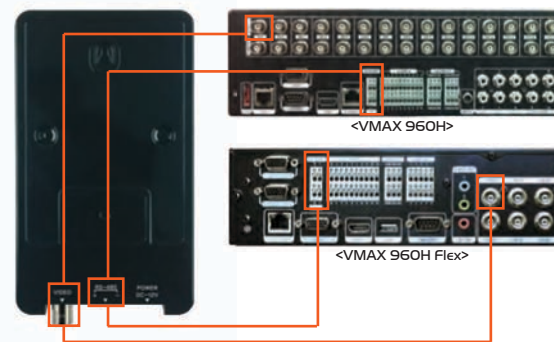
Face Stamp (IEA) / User's Manual

MADE IN KOREA



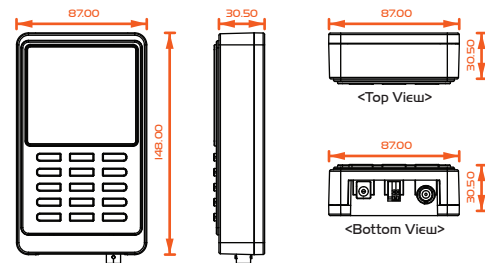
1	Display Panel	Display ID input, time & date and message information
2	Camera	Camera
3	POWER	Indicate power status
4	ACCESS / FAIL	Face stamp alerts Access or Fail by authorization
5	F1	Press button to identify the action of "IN"
6	F2	Press button to identify the action of "OUT"
7	F3	Blank Key
8	Number Key Pad	Keypad to input ID
9	* Cancel	Cancel ID input
10	# Enter	ENTER ID for approval
11	Mount Hole	Mount Hole
12	Video	Video output which should be connected into any CH of DVR
13	RS-485	Face Stamp telemetry communication connected into keyboard port in supported DVR
14	Power	Power Input, DC12V, 1A

FACE STAMP is supported in VMAX960H and VMAX960H Flex only.



1. RS-485 connection between FACE STAMP and KEYBOARD PORT.
2. Video output connection into any channel of VMAX960H or VMAX960H Flex.

## DIMENSION

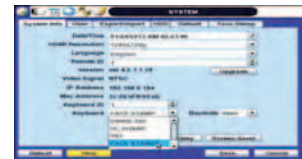


Check In	Check Out
1. Press F1 button	1. Press F2 button
2. Input ID (ID displayed not star mark)	2. Input ID (ID displayed not star mark)
3. Press Enter button	3. Press Enter button
4. Camera recording by Event	4. Camera recording by Event
*Cancel button to edit ID number	

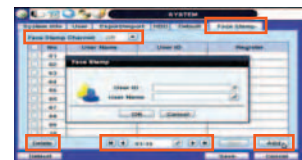
Check in success	Check out success
Display Check in Success message Ex) Hello Susan Kim	Display Check out Success message Ex) Bye Susan Kim
Check in failure	Check out fail
Display "Invalid ID" with Beep	Display "Invalid ID" with beep

Classification	Content	Detail	
Display	122x32 dots LCD	Display Type	122x32 dots
		LCD Type	STN, Yellow-Green, Transflective, Positive
		LCD duty	1/32
		Viewing Direction	12:00
		Backlight Type	SIDE White LED
Camera	1/3 inch CMOS Image Sensor	Pixels	NTSC(720x480), PAL(720x576)
		Min illumination	0.2 Lux
		Resolution	420 TV Lines
		S/N Ration	46dB
		Gamma	0.45
		Sync System	Internal
Video out	1 port(BNC type)		
Interface	RS485 1port		
Key	3x5, metal dome type	operation force	160+/-20g
Display	122x32 dots LCD	Life Cycle	1000K
Etc	buzzer		
LED indicator	Power, Open, Alarm		
Power	Jack(2.5pi) type, 12Vdc 1A	support to MAX	20Vdc
Size(WxHxD)	148x87x34.7(mm)		
Operating temperature	0~40°C		

FACE STAMP is supported in VMAX960H and VMAX960H Flex only.



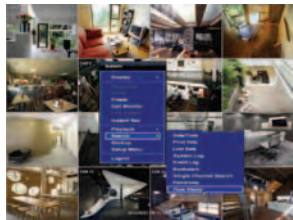
1. Select "FACE STAMP" in Keyboard telemetry set-up.
2. Set Keyboard ID.
3. Set Baud rate into.



1. Select "FACE STAMP" TAP menu.
2. Set Video input channel which is connected into FACE STAMP device.
3. Press "ADD" button to register User ID and Name.
4. "Delete" button is to erase USER after click the target list.
5. User list page display.



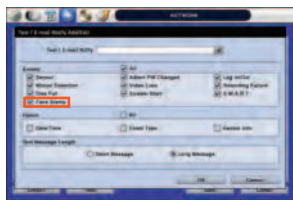
1. Select "Schedule" to set FACE STAMP event.
2. FACE STAMP will be operated as independent event through FACE STAMP device.



1. Click right button of mouse in Live model in order for FACE STAMP Search.
2. Select Search and FACE STAMP in sub-menu.



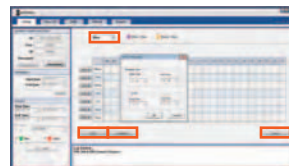
1. Check condition "IN" and/or "OUT".
2. Click calendar icon to select target date.
3. Click Search to find FACE STAMP events.
4. Event page display.
5. Click play button to play back the event



1. Go to Network menu to set e-mail notification of FACE STAMP.
2. Select FACE STAMP to get notification.

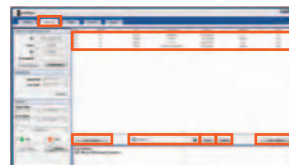


1. Input IP, Port, DVR ID and Password to connect the target DVR which is connected with FACE STAMP. \* Check 'Connect Success' on Log View.
2. Set Start Date and End Date to download FACE STAMP event data. Then press DOWN button.



<Work Time Set-up>

Administrator can set-up the work time by day when Go button is pressed. Starting & end time of work and break. After setting of work time, save this list. Administrator can edit and delete the pre-saved list in drop-down list.



<User List>

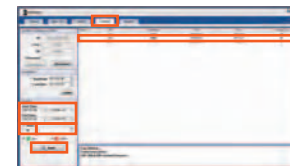
When Face Stamp data is downloaded from VMAX960H / VMAX960H flex, registered user list in DVR will be got automatically and displayed. User list can be added and deleted in Face Stamp S/W. After revision of user list list, it can be uploaded into connected DVR directly. Import of user list is available.

User list should be downloaded from DVR first then modify. When user list is uploaded from Face Stamp S/W, it will overwrite the DVR user list.



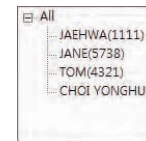
<Daily Search>

Set desired date to search Face Stamp events and set other conditions to apply like name, id, in and out then click search. Face Stamp events will be displayed with still image by time zone. When image is double clicked, Pre-event recording will be displayed in moving picture.



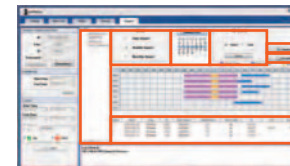
<Period Search>

Set start & end time to search Face Stamp events during desired period and set other conditions to apply like name, id, in and out then click search. The events list will be displayed and Preevent recording in moving picture can be displayed when double clicking the each event.



<Report>

Face Stamp SW supplies daily, weekly, monthly report by face stamp event as well as work hours calculation. In user tree, you can select specific user to see individual report. If you select the root group, all user list will be displayed.



<Daily & Weekly Report>

Select user and daily or weekly report. Target date/week can be selected in calendar and it should be within downloaded period. After then press search to get proper event during desired period. Report will be displayed graphical report by work time set-up and event lists in bottom. User can save and print the report.



<Monthly Report>

Monthly Report will be displayed events lists only.



<Print Report>

Printed report will supply user information. Picture is available when it is uploaded in user list. Report will show all record of In/out Face Stamp event and calculated work hours.