

# DW DIGITAL WATCHDOG

*Everything's Digital*

How to Use the Restore CD



Restart the DVR and insert the restore CD into the CD/DVR Drive

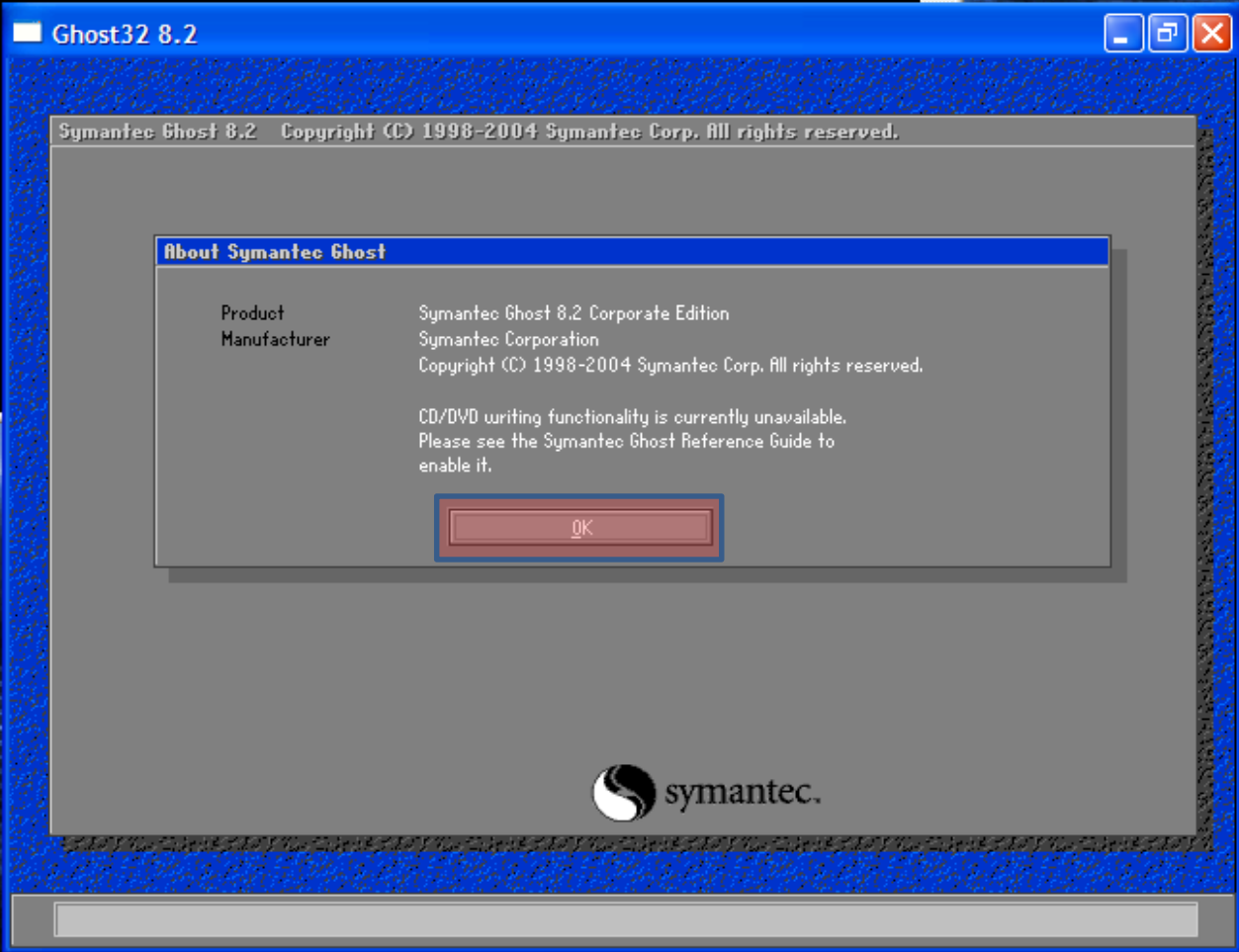
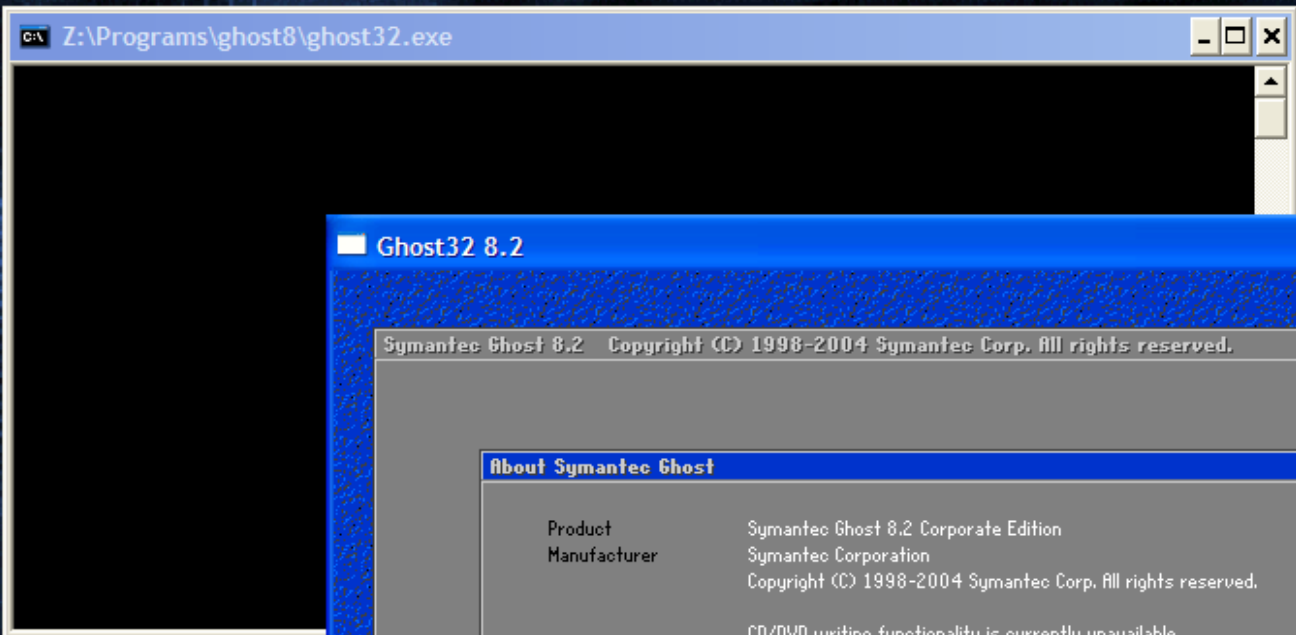
BACKUP PE

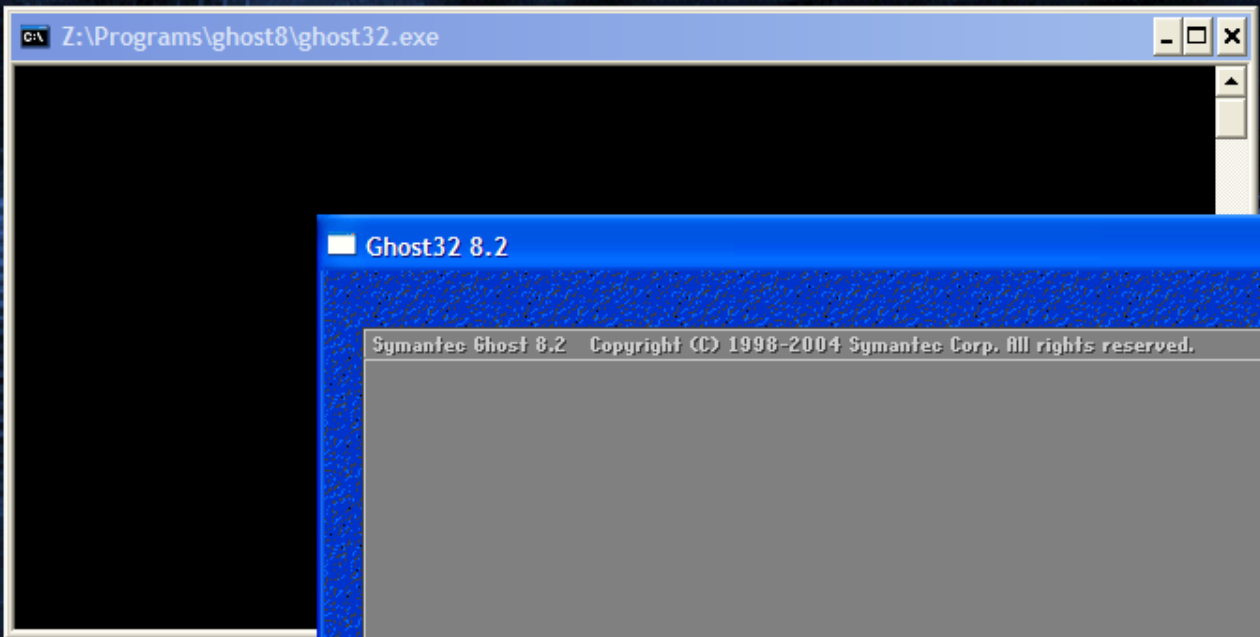
created with PE-Builder

# BACKUP PE

- Programs ▶
  - System ▶
  - Command Prompt (CMD)
  - Run...
  - About ▶
- Exit
- Accessories ▶
- System Tools ▶
- A43 File Management Utility
- Startup ▶
- Symantec Ghost v8 ▶
  - Ghost32
  - Ghost32 with Force Disk Signature Preserve switch (-FDSP)
  - Ghost32 with Image Disk (sector copy) switch (-IA)
  - Ghost32 with Continue if disk has bad blocks switch (-FRO)
  - Alphabetical list of switches for ghost
  - GhostCast Server
  - Ghost Explorer






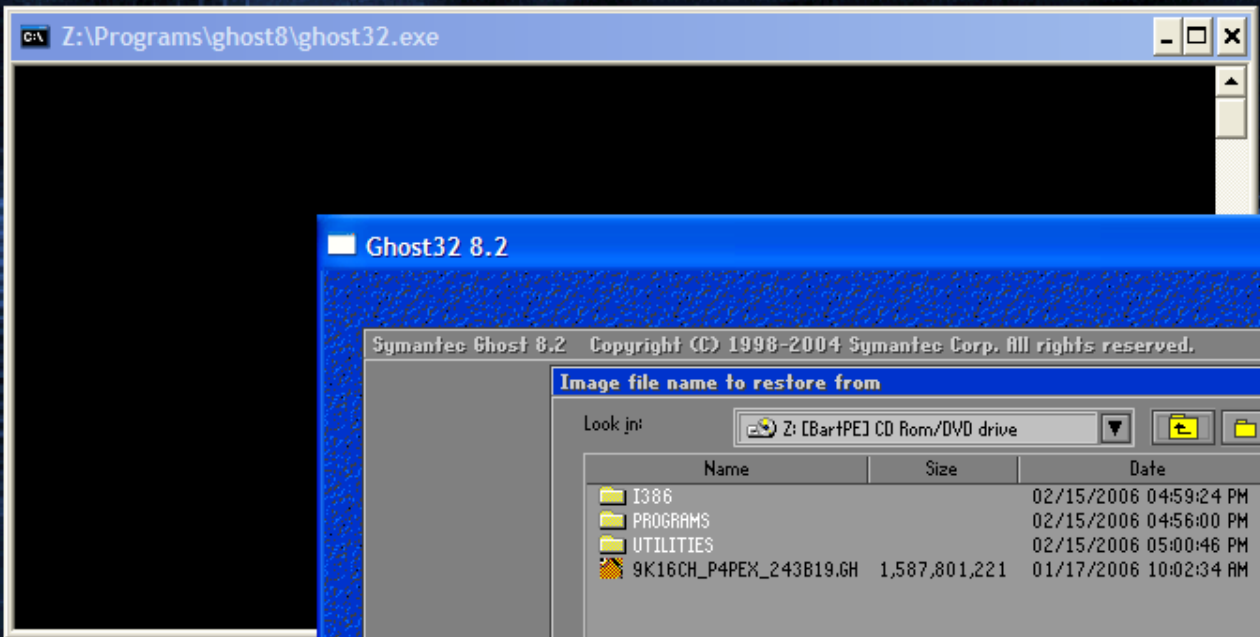


**Ghost32 8.2**

Symantec Ghost 8.2 Copyright (C) 1998-2004 Symantec Corp. All rights reserved.

- Local
  - Peer to peer
  - GhostCast
  - Options
  - Help
  - Quit
- Disk
  - Partition
  - Check
  - From Image
- To Disk
- To Image

 symantec.



**Ghost32 8.2**

Symantec Ghost 8.2 Copyright (C) 1998-2004 Symantec Corp. All rights reserved.

**Image file name to restore from**

Look in: Z:\[BartPE] CD Rom/DVD drive

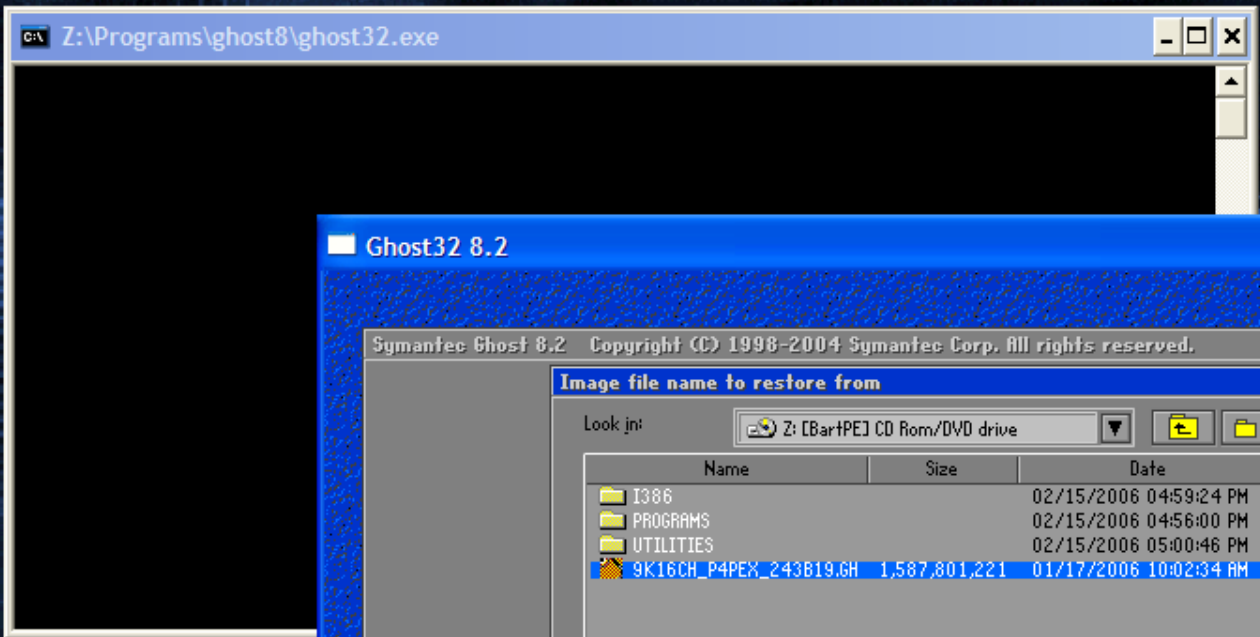
Name	Size	Date
I386		02/15/2006 04:59:24 PM
PROGRAMS		02/15/2006 04:56:00 PM
UTILITIES		02/15/2006 05:00:46 PM
9K16CH_P4PEX_243B19.GH	1,587,801,221	01/17/2006 10:02:34 AM

File name:

Files of type: \*.GHO

Image file description:

Current path is Z:\\*.GHO



**Ghost32 8.2**

Symantec Ghost 8.2 Copyright (C) 1998-2004 Symantec Corp. All rights reserved.

**Image file name to restore from**

Look in: Z:\BartPE\ CD Rom/DVD drive

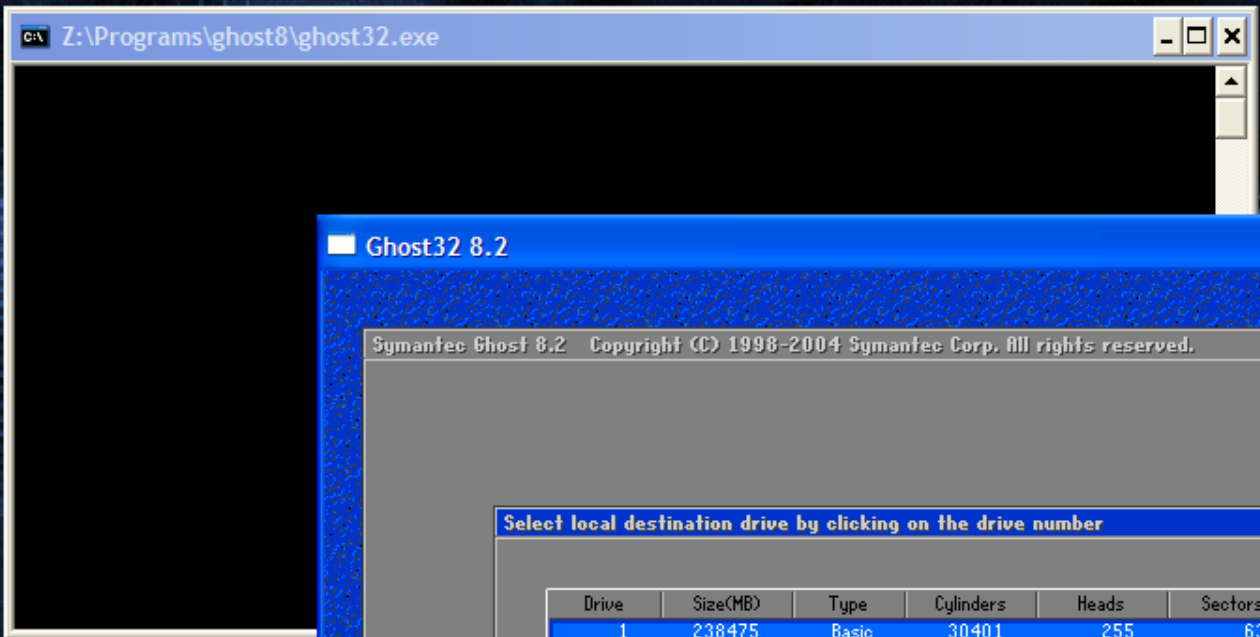
Name	Size	Date
I386		02/15/2006 04:59:24 PM
PROGRAMS		02/15/2006 04:56:00 PM
UTILITIES		02/15/2006 05:00:46 PM
9K16CH_P4PEX_243B19.GH	1,587,801,221	01/17/2006 10:02:34 AM

File name: 9K16CH\_P4PEX\_243B19.GHO

Files of type: \*.GHO

Image file description:

Current path is Z:\\*.GHO



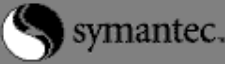
**Ghost32 8.2**

Symantec Ghost 8.2 Copyright (C) 1998-2004 Symantec Corp. All rights reserved.

Select local destination drive by clicking on the drive number

Drive	Size(MB)	Type	Cylinders	Heads	Sectors
1	238475	Basic	30401	255	63

OK Cancel



The main window has a blue border and a grey background. It contains a smaller dialog box with a blue title bar and a white background. The dialog box has a table with one row of data. Below the table are two buttons: "OK" and "Cancel". At the bottom center of the main window is the Symantec logo, which consists of a stylized 'S' in a circle followed by the word "symantec.".



C:\ Z:\Programs\ghost8\ghost32.exe


**Ghost32 8.2**

Symantec Ghost 8.2 Copyright (C) 1998-2004 Symantec Corp. All rights reserved.

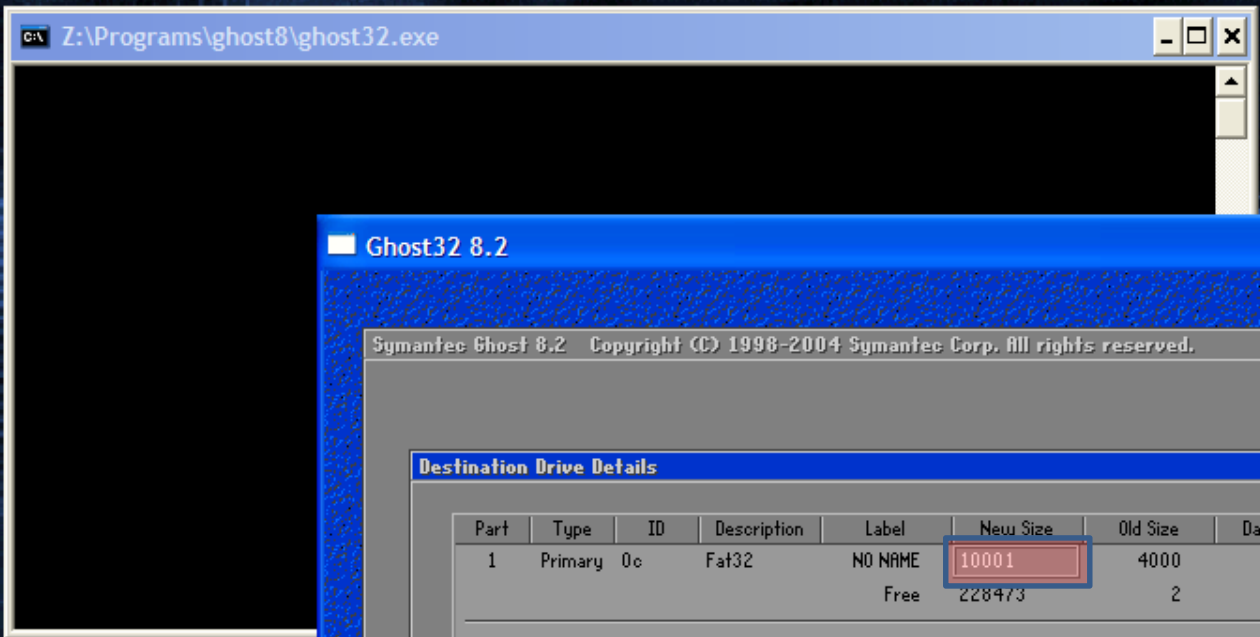
**Destination Drive Details**

Part	Type	ID	Description	Label	New Size	Old Size	Data Size
1	Primary	0c	Fat32	NO NAME	<input type="text"/>		3022
			Free		2	2	
Total					238475	238475	3022

OK Cancel

 symantec.

**Enter 10000**



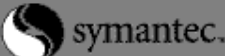
**Ghost32 8.2**

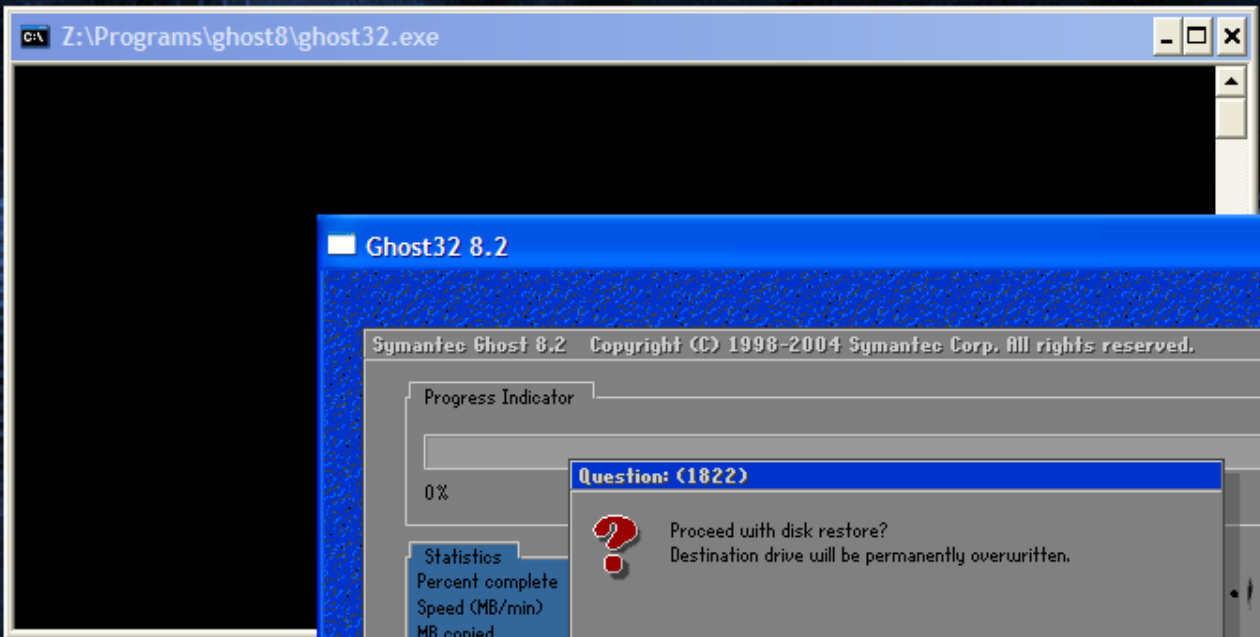
Symantec Ghost 8.2 Copyright (C) 1998-2004 Symantec Corp. All rights reserved.

**Destination Drive Details**

Part	Type	ID	Description	Label	New Size	Old Size	Data Size
1	Primary	0c	Fat32	NO NAME	10001	4000	3022
				Free	228473	2	
Total					238475	238475	3022

OK Cancel





**Ghost32 8.2**

Symantec Ghost 8.2 Copyright (C) 1998-2004 Symantec Corp. All rights reserved.

Progress Indicator

0% 100%

Statistics

- Percent complete
- Speed (MB/min)
- MB copied
- MB remaining
- Time elapsed
- Time remaining

Details

Connection type	Local
Source	Local file Z:\9K16CH_P4PEX_243B19.GHO, 238475 MB
Destination	Local drive [1], 238475 MB
Current partition	
Current file	

symantec.

**Question: (1822)**

Proceed with disk restore?  
Destination drive will be permanently overwritten.