

VMAX

H.264 Digital Video Recorder



Please note that the Accessory Kit and Shipping Box contain the following items :

Items	Photo	Quantity	Items	Photo	Quantity
User Manual (OVR & Software)		1 Set 1 Set	12V DC Adaptor & Power Cable		1 Set 1 Set
CD (Manual & Software) & Quick Start Guide		1 Set 1 Set	Terminal Block (External) & Rubber Mount		1 Pair (2 Pieces) 1 Set (4 Pieces)
IR remote Control		1 Set	USB Mouse		1 Set

Administrator Login : Admin / No Password

ATTENTION PLEASE !!!

This document is a Quick Start Guide Please reference to the user manual for more detail information.

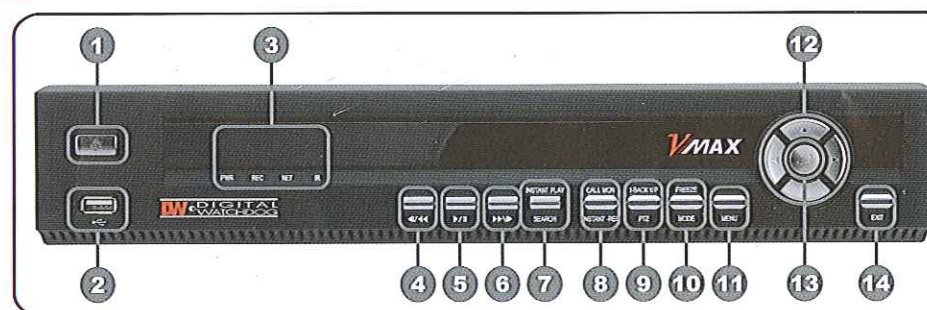
Front Panel

DW-VMAX 4 Compact Case (W x H x D : 270 x 71 x 215 mm)



No.	Buttons	Functions
1	Power Button	System startup or shutdown (shutdown is password protected)
2	USB Port	USB port (Ver. 2.0) for mouse operation or backup or FW update
3	LED Indicator	Indicates system status Power, Record and Remote Controller
4	Instant-Rec I-backup (Press and hold)	Emergency recording / Used to initiate instant back up
5	Search Instant Play (Press and hold)	Go to search mode / Used to initiate Instant Reverse Playback
6	Mode Freeze (Press and hold)	Change screen mode / Used to initiate Freeze function
7	Menu Exit (Press and hold)	Open system menu or return to previous mode
8	Direction Button	Move to the direction that user wants to select
9	Enter Button	Select value or setting

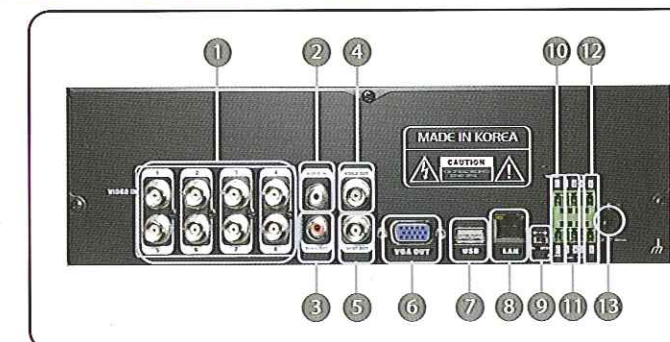
DW-VMAX 8/16 Height (W x H x D : 360 x 66 x 380mm)



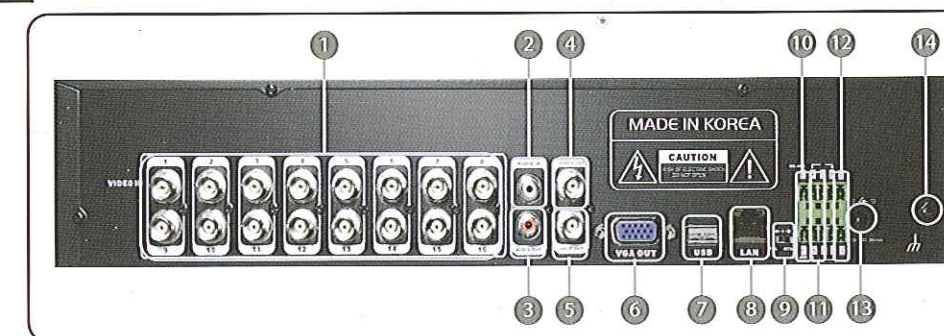
No.	Buttons	Functions
1	Power Button	System startup or shutdown
2	USB Port	USB port (Ver. 2.0) for mouse operation or backup or FW update
3	LED Indicator	Indicates system status Power, Record, HDD and Remote Control
4	Fast Rewind Button	Fast rewind during playback
5	Play/Pause Button	Play or pause by toggle during playback
6	Fast Forward Button	Fast forward during playback
7	Search Instant Play(Press and hold)	Go to search mode / Used to initiate Instant Reverse Playback
8	Instant-Rec Call Mon(Press and hold)	Emergency Recording / Used to display full screen video of all installed cameras in sequence by spot out
9	PTZ I-backup(Press and hold)	Bring up PTZ Camera control / Used to initiate instant back up
10	Mode Freeze(Press and hold)	Change screen mode / Used to initiate Freeze function
11	Menu Button	Open system menu
12	Direction Button	Move to the direction that user wants to select
13	Enter Button	Select value or setting
14	Exit Button	Cancel setup or return to previous mode

Rear Panel

DW-VMAX 4 Compact Case (W x H x D : 270 x 71 x 215 mm)



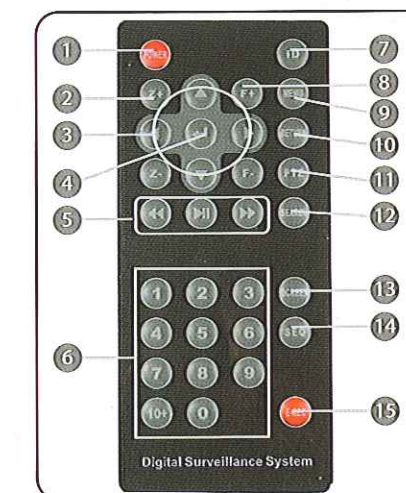
DW-VMAX 8/16 Height (W x H x D : 360 x 66 x 380mm)



No.	Name	Description
1	Video-In	Camera. (Supports NTSC/PAL)
2	Audio-In	Audio input device (with amplifier)
3	Audio-Out	Audio output device (with amplifier)
4	Video-Out	Composite Monitor
5	Spot-Out	Composite Spot Monitor
6	VGA-Out	VGA Monitor
7	USB Port	USB port (Ver 2.0) for mouse operation or Image backup
8	LAN Port	10/100 Ethernet connection terminal
9	NTSC/PAL Switch	Select the video signal type
10	RS-485 Port	PTZ camera or external keyboard
11	Sensor Input	Sensor input
12	Alarm Output	Alarm output
13	Power Input	Power supply connection (Default : 12 V, 5-8A)
14	Grounding Terminal	Ground connection

IR Remote Control

No.	Functions
1	Power Button
2	PTZ control (Zoom In & out)
3	PTZ control (Left/Right/Up/Down)
4	Enter (Selection) Button
5	Playback Button on Search Mode (Fast Backward/Playback/Stop/Fast Forward)
6	Numeric Button
7	ID Selection Button
8	PTZ control Focus Button
9	Menu Button
10	Return Button
11	PTZ Button
12	Search Button
13	Screen Mode Button
14	Auto-Sequence Button on Live Display Mode
15	Instant (Emergency) Recording Button



Quick Start Guide

Initial Setup

When the cameras and monitors are connected to the DVR, please use the quick start guide to configure the menu setup.

DVR Installation :

1. Make sure the cameras and the monitors are properly connected to the DVR.
2. The DVR location must be dust and moisture free : no direct sun light : server room temperature is recommended.
3. Do not interrupt during the initial boot-up. UPS (Uninterruptable power supply) is recommended.

First initial Boot-Up

To access the Menu Setup Press [Menu] button on the front key pad or right click the mouse button Login is admin / No password is the default.

Main System Menu

Main system menu is Graphical User Interface comprised of Six major Groups of setup option in selectable icons. They are either selectable via USB mouse, frontal Key pad or the remote control.

Navigation

Use the supplied USB mouse for easy operation. Alternatively, use the following frontal key pad or remote controller key pad.
 - Use the (Enter) button to commit the highlighted selection
 - Use the directional keys \uparrow \downarrow \leftarrow \rightarrow to move through a menu or list
 - Use (Menu) button to enter and exit menu or a window

Main Menu Icons

Six menu icons are SYSTEM, DEVICE, RECORD, NETWORK, BACK UP, Q-SETUP

Date and Time Setup

1. Find the SYSTEM INFO icon in Main System Menu and Select it
2. Select appropriate display format from the " DATE/TIME format " drop down list
3. Select appropriate year, month, date, hour, minute and second from the " Date / Time Setup " Section
4. Select appropriate time zone from the " Time Zone " drop down list

Hard Disk Drive Clear

When adjusting the time and data for the first time make sure to clear Hard Disk Drive.

1. Locate HDD icon and select it on System Info
2. Click on the " Format " button
3. Exit Out of the main menu and reboot

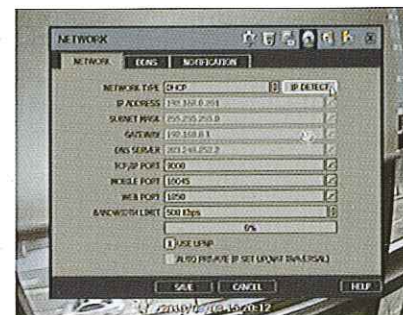
Record Configuration

1. Locate RECORD icon from the main menu and select it
2. On the Record Setup window click on CAMERA section
3. Choose the desired resolution and quality and frame rate by using the drop down list items. They are configured by each channel or you may use the copy setting button on apply to all cameras
4. Select the Schedule page on Camera section
5. On the schedule page select the Mode Column to choose between Continuous, Motion, Sensor, Continuous + Motion, Continuous + Sensor, Motion + Sensor

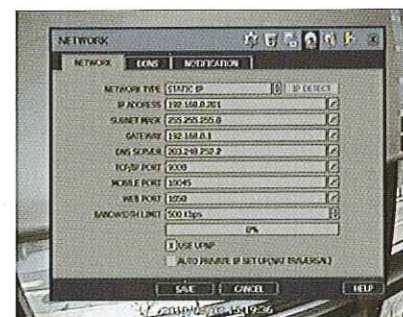
Network Setup (Server & ACS & Web)

Network Setup

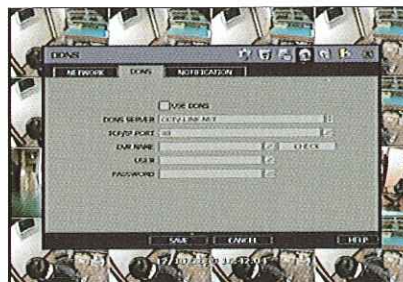
To access the Menu Setup press [Menu] at the front of the DVR or the IR remote controller Select [Network] to configure remote access



1. In the [Network] menu set "Network Type" to [DHCP] and click [IP DETECT]
2. Change the [Network Type] back to [STATIC IP] after the DVR picks up a new IP address
3. Check the DHCP settings of you router and set the DVR IP address outside of the DHCP range
4. If the [DNS SERVER] IP address is using an internal IP (Example: 192.168.0.2 or 10.10.10.2), DDNS info registration might be blocked, due to Router setting error or network security reasons in DHCP setting. Therefore, using a public DNS: (168.126.63.1 / 168.126.62.2 / 164.124.101.2)
5. Click [SAVE]



DDNS Registering

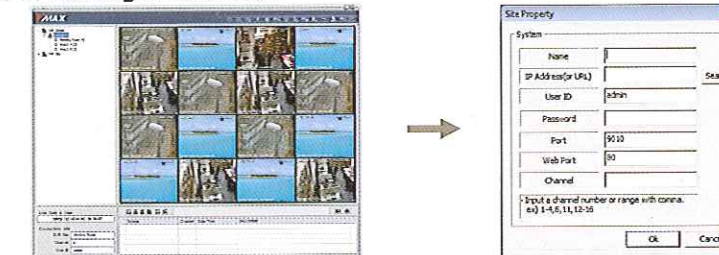


Check [USE DDNS] box
 Select [DDNS SEVER] CCTV-LINK.NET (Recommended)
 Enter the DVR name and click [CHECK] button
 Click [SAVE] after "THIS DVR NAME CAN BE USE" appears on the screen
 To use [DYNDNS.COM] GoTo: <http://dyndns.org> and Create an account

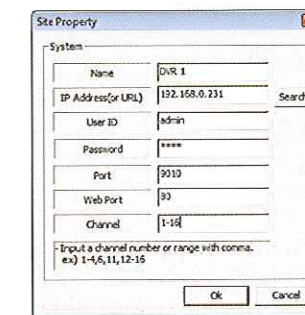
Quick Setup & Help

ACS(Advanced Client Software)

DVR Site Registration
 - Select DVR Site Registration icon



- In Site Manager, select [Site List] and click [Add] to add or click [Modify] to amend DVR site information.



Default Port # : 9010

ID : admin / No Password (Factory Default)
 For DDNS connection, you must input the URL in the following format: [the DVR name or mac address].[ddns link]
 e.g. 001c84010021.cctv-link.net



Web

ID : admin / No Password

Please put IP on address bar in Internet Explorer which you want to connect

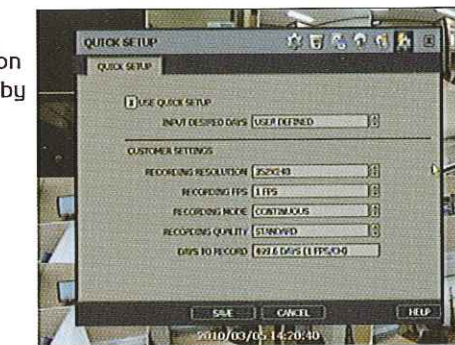
User has to download Active-X file from DVR and install it at workstation P/C before monitoring live video.



Quick Setup

Quick Setup helps user make simple configuration for recording resolution, entire recording speed by frame, recording mode, and recording periods.

The system will put the first priority for configuration on this quick setup and will follow this rule regardless of configurations set in other menus. Users should not tick in the check-box of USE QUICK SETUP if he/she wants to utilize full system configuration defined in the other menus.



Note : Quick setup must be de-activated if the user requires configuration from the other menus. After the user ticks "USE QUICK SETUP" to define settings, the system will ignore all other configurations set by full menus.

Help

Note : **F1** The "HELP" button will help you understand how to setup several important settings such as DDNS, NOTIFICATION, BACKUP, SCHEDULE, NETWORK, and CAMERA even without the user's manual book. For example, if you need help about how to set "BACKUP", click "HELP" button at the right bottom of the BACKUP menu.

