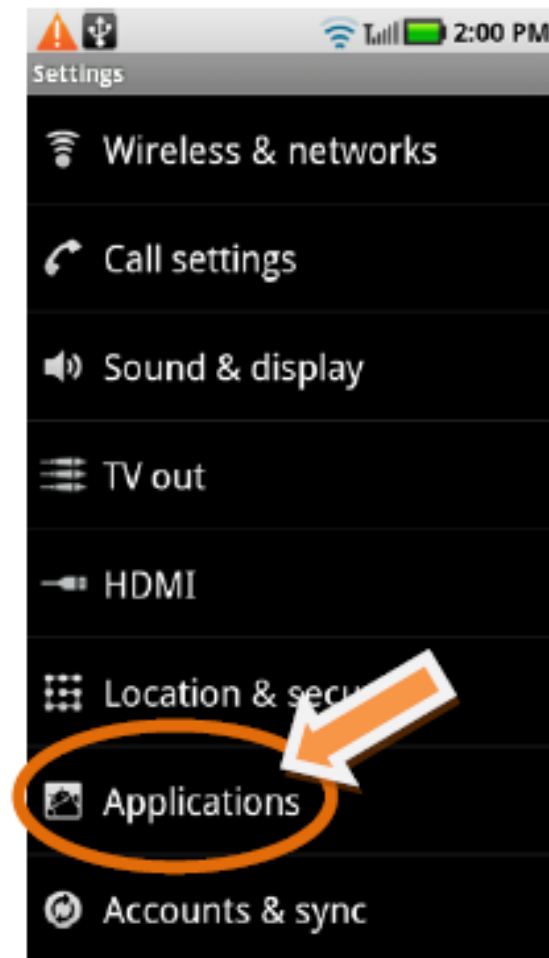
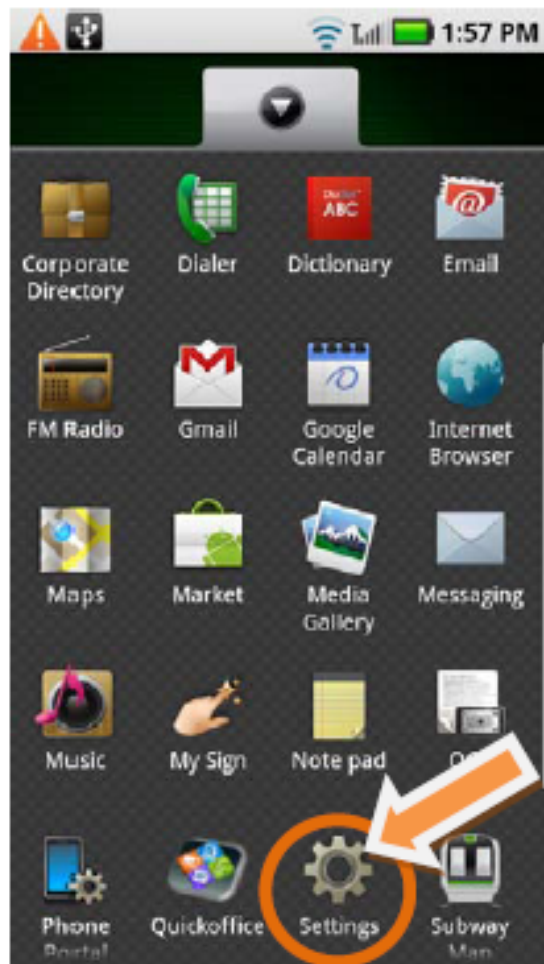


How to install 'DW VMAX into Android Platform

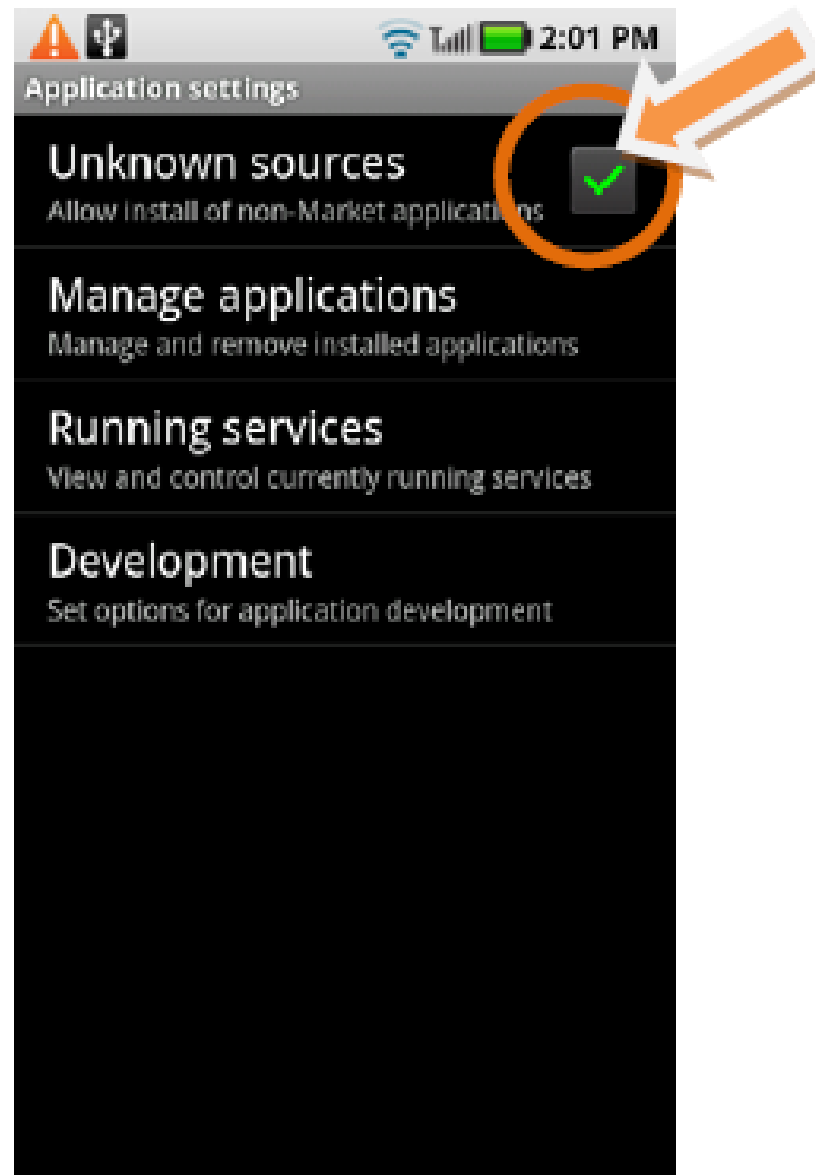
(By using SD Card)

1. Before you start

- 1) Go to 'Settings' in the main menu.
- 2) Choose 'Applications'.

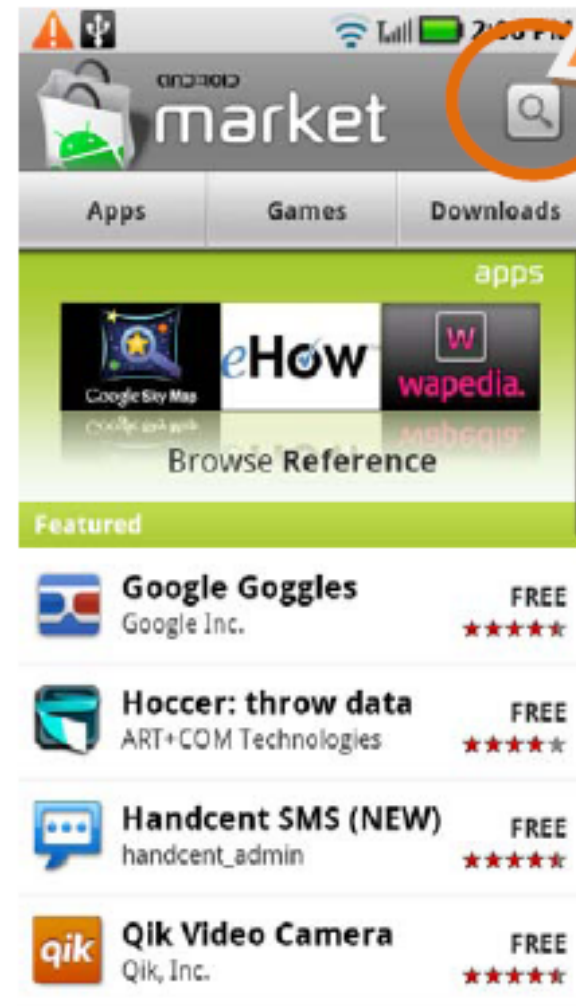
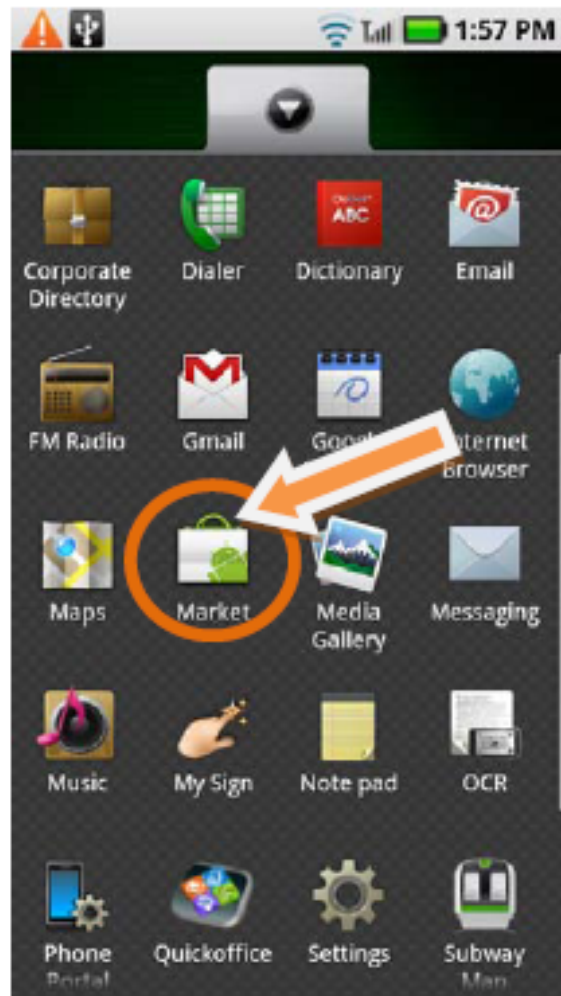


3) Check 'Unknown sources' check box.



2. Installing ASTRO Manager utility program

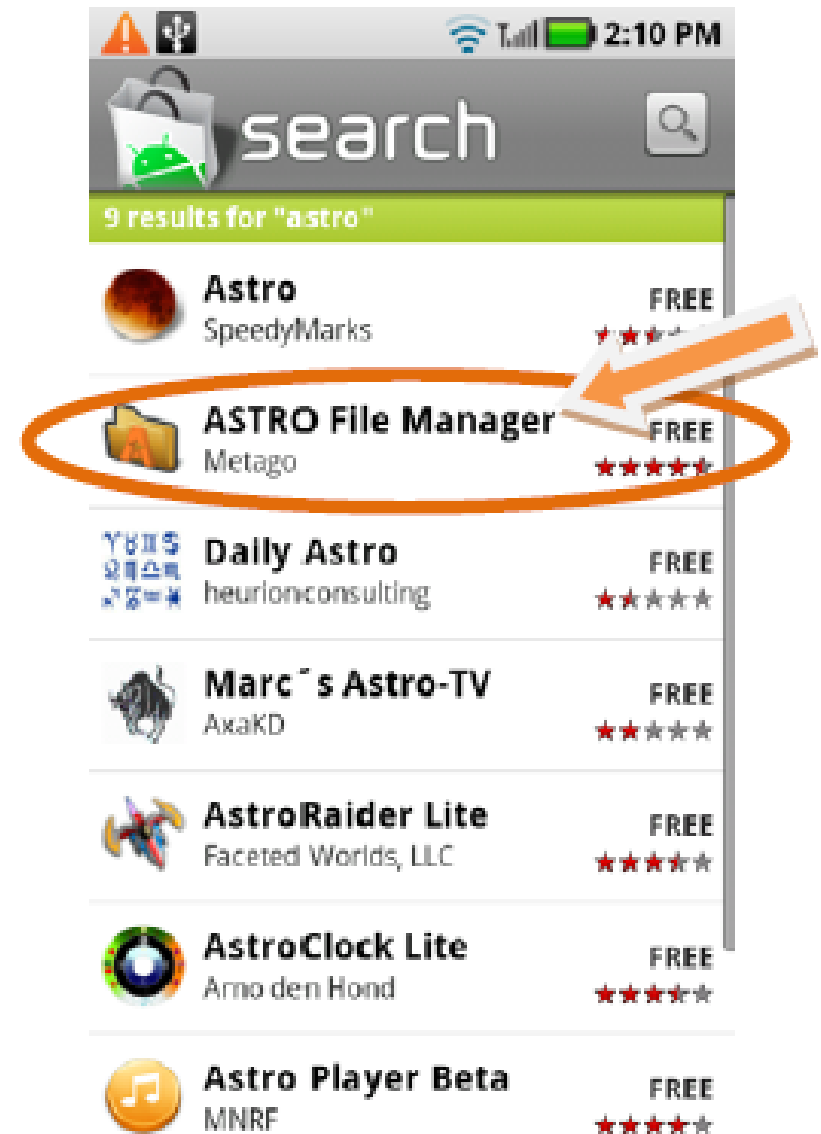
- 1) Go to Market.
- 2) Click Search button.



3) Type in 'ASTRO' and click 'Search'.

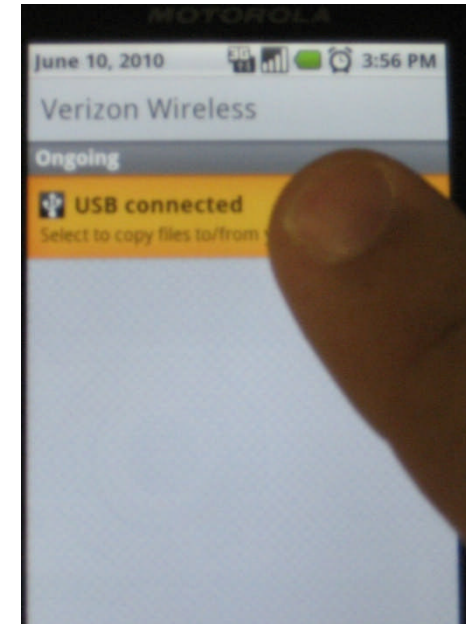
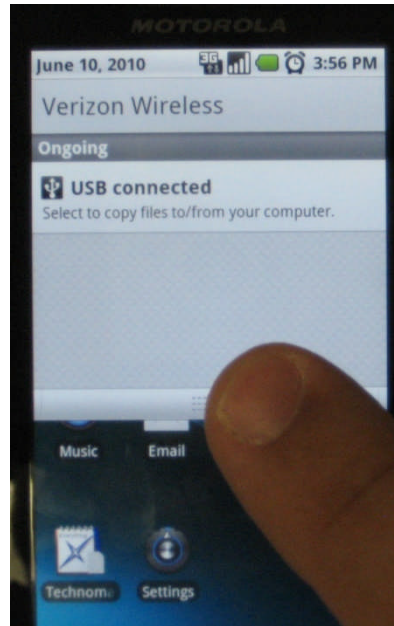
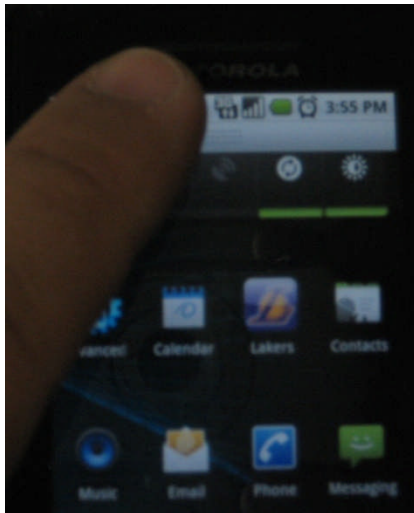


4) Install 'ASTRO File Manager'.

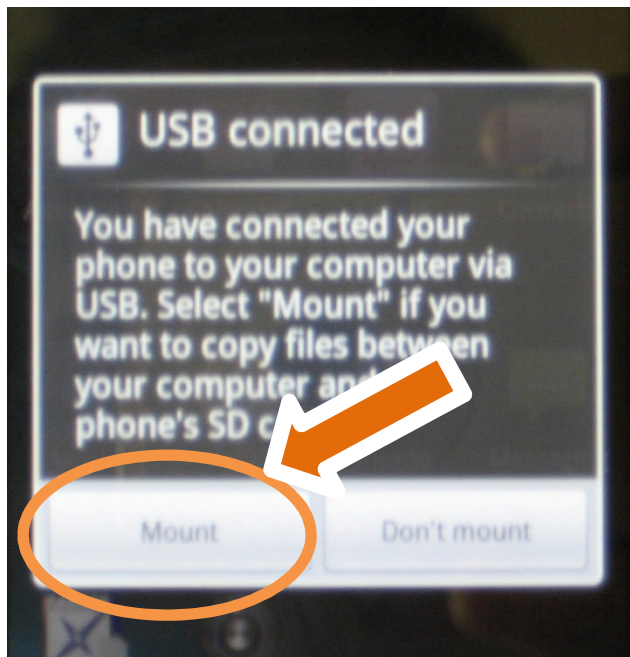


3. Installing 'DW VMAX Android' software program into your Android

1)



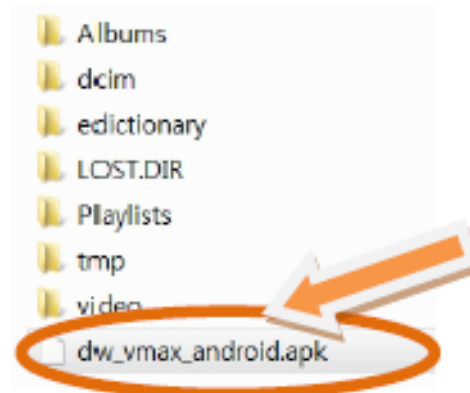
2)



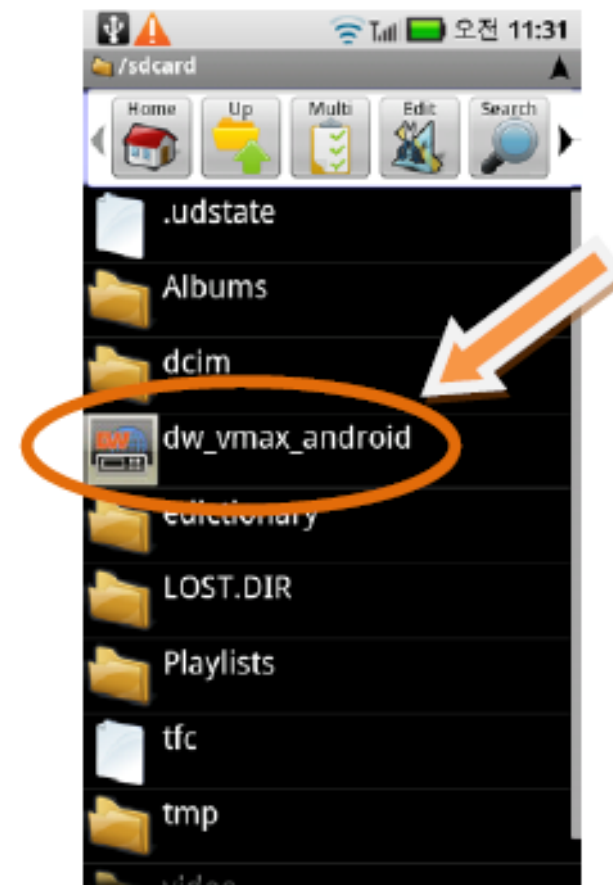
1. Mount the USB by pressing and holding the top of the screen and dragging down to reveal the menu.
2. When prompted Click Mount.

3) Copy 'dw_vmax_android.apk' file to the SD memory card from your PC and disconnect your Android Phone from your PC.

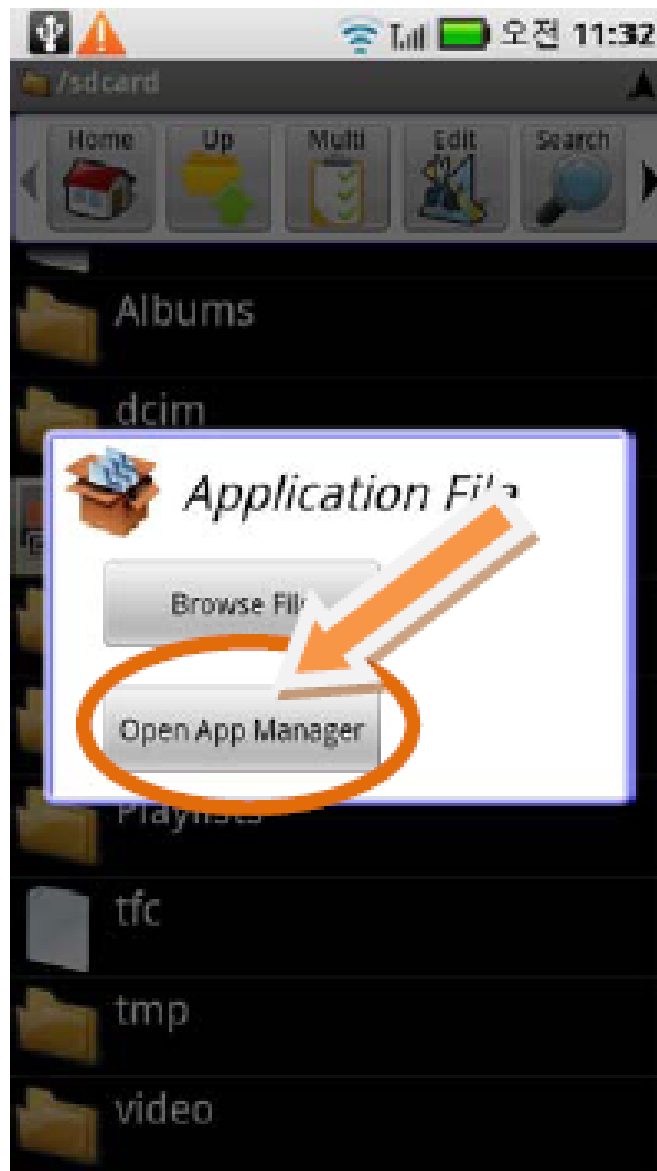
4) Execute 'ASTRO' program.



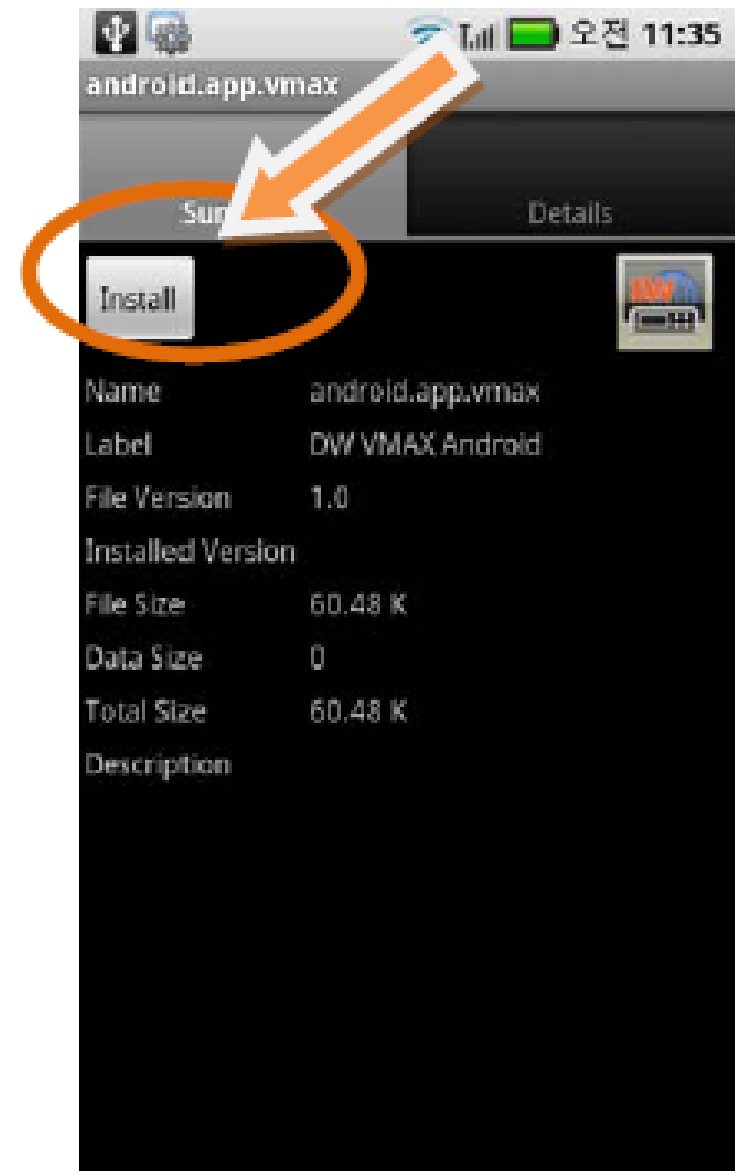
5) Now you can see 'dw_vmax_android' icon in the list.



6) Click 'Open App Manager' button.



7) Click 'install' button to install it.



4. How to use 'DW VMAX Android' application

- 1) Once installing process is done, you will see 'DW VMAX Android' icon in your Android phone as shown below.



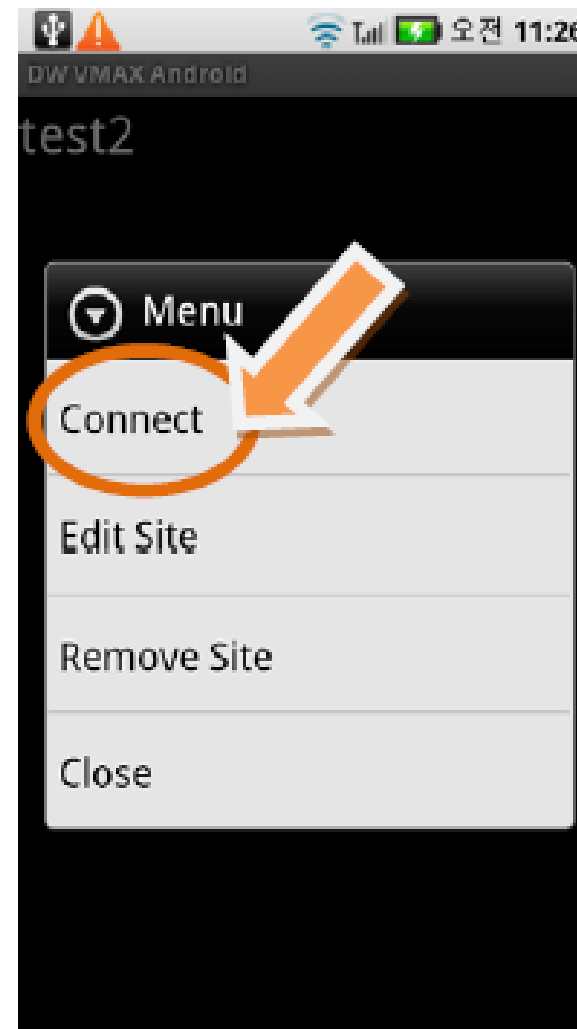
- 2) When the connection is made, you may see the black screen. Press the menu button on your Android phone, then you will see 'Add Site' and 'EXIT' menu on the screen. Click 'Add Site'.



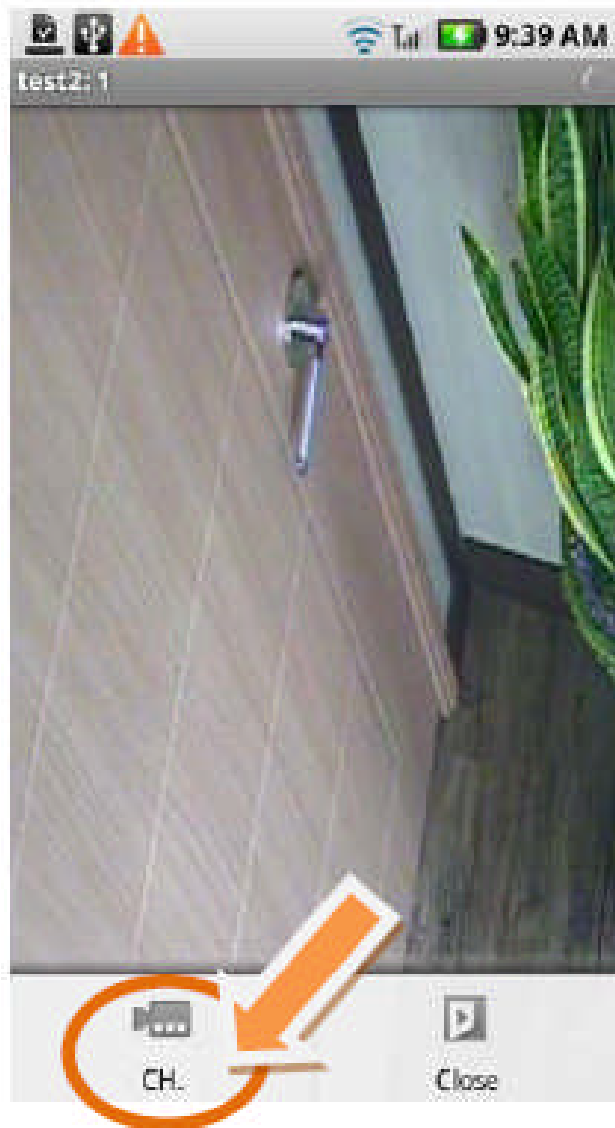
- 3) Input the connection information such as Site Name, IP Address, Port, User ID and Password. Click 'Save' button to save and 'Close' button to exit.



- 4) If you press and hold the site name for a while, then you will see the menu shown as below. Click 'Connect' button.



5) Now you can see live video from the site that you chose. To see another channel, click 'CH.' button.



6) Select a channel that you would like to see live view.

