



# NEXUS

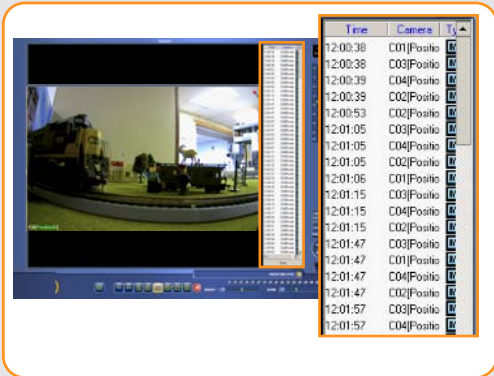
## High Performance NVR

- Record up to 32 IP Cameras
- View and Record from Anywhere in the World
- HDD Field Upgradeable
- DVR Health Check
- Multiple Levels of Security Access
- Dual Monitor on All Systems
- POS Support
- Support for Major Brands of IP Cameras and Servers
- Large Internal Storage up to 20 Terabyte



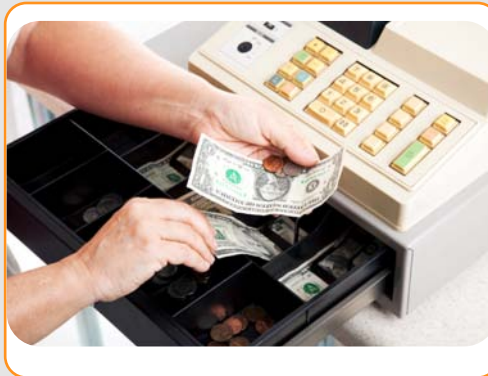
## INDEX SEARCH

Perform a search based on criteria such as sensor, motion, and instant record events and view the results instantaneously in a log report format.



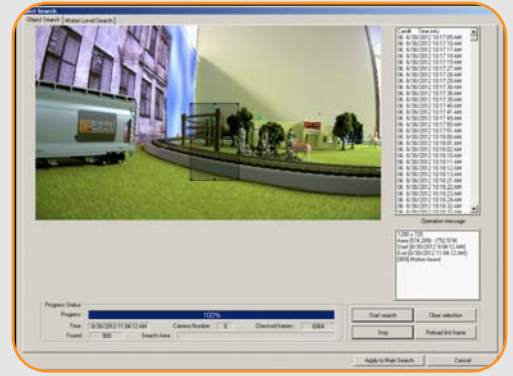
## POINT OF SALE SUPPORT

The Nexus helps you control your entire POS security from a single location. With text overlay from any POS Box, prevent fraud, monitor any type of transactions, and control inventories.



## SMART OBJECT SEARCH

Let the Nexus search data for you and turn video analysis hyper-efficient with smart object search. Search a region in the video for any motion changes. Your results are neatly displayed and viewed quickly.



## PREVIEW SEARCH

Preview Search helps you find the exact moment where an event occurred. Preview Search gives you a visual overview of a single camera, showing the first frame of every hour/ 10 minutes/ 1 minute.



## SINGLE CHANNEL PLAYBACK IN LIVE MODE

Monitor live video and review events simultaneously. Pause, rewind, and resume live video within seconds of an alarm event or suspicious activity.



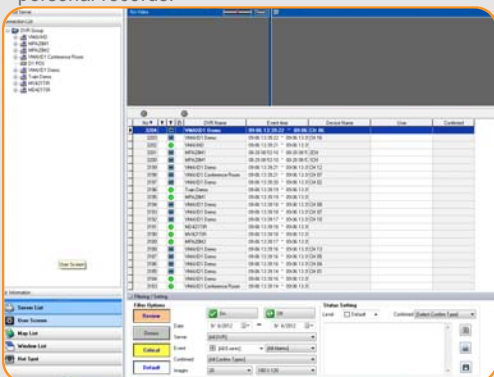
## ONVIF COMPLIANT

Using the ONVIF Protocol, the Nexus can be easily combined with any other ONVIF supported device.



## ALARM MONITOR

The Nexus' elaborate Alarm monitoring system allows you to view any event notification as it occurs in real-time. Then, assign responsibility and priority for each event, or export log reports for your personal records.



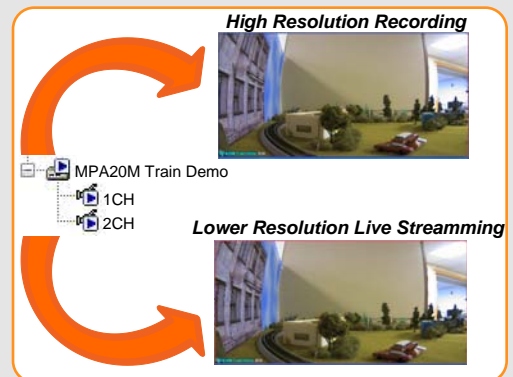
## E-MAPPING VIA NxMS

Place all your cameras in the corresponding location on a CAD diagram of your property. Receive pop-up video notifications when an event is triggered. Double click on any icon to instantly view a live image from the camera or control sensors and alarms.



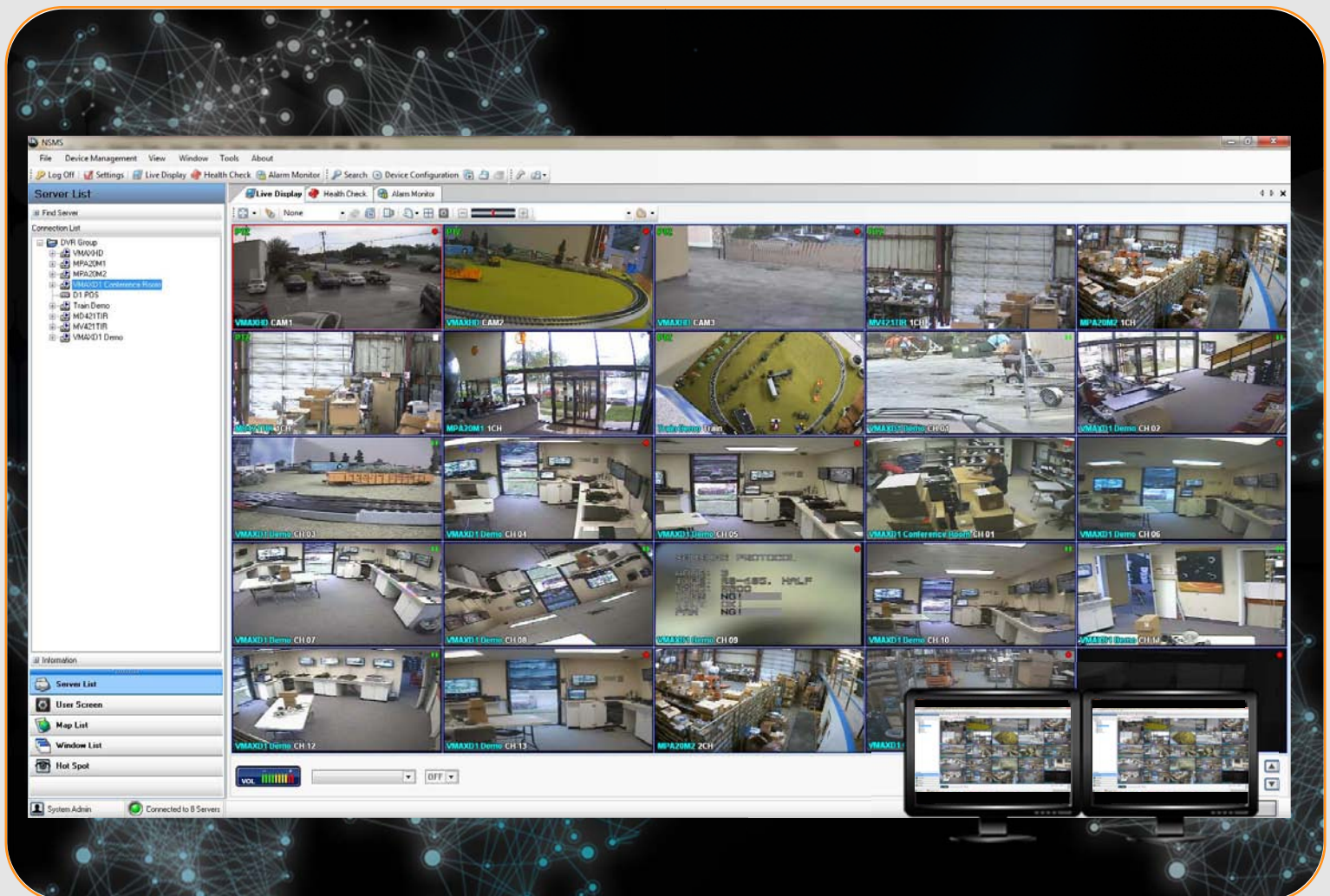
## DUAL STREAM

Cameras can be set to record at high resolution via the first stream, while displaying live video on the Nexus via the lower resolution, second stream. This highly optimized feature is an efficient solution to installations with limited network bandwidth.



## NxMS REMOTE CLIENT SOFTWARE

Digital Watchdog's NxMS Client Software is a powerful remote monitoring software, with features such as Preview & Thumbnail Search, POS text overlay in live mode & POS search, camera and system mapping interface and much more. View up to 128 Channels and control up to 256 devices from anywhere in the world!



## HYBRID CLIENT SOFTWARE

The NxMS client software is a hybrid software that offers a single control station for all your Network and Analog recording devices. The NxMS controls not only the Nexus, but also our high end line of DVRs, including the VMAXD1 and VMAXHD, and ALL of Digital Watchdog's MEGAPIX Cameras.



# NEXUS High Performance NVR

## Summary

Nexus is a cutting-edge Network Video Recording (NVR) designed to support most major brands of IP cameras, megapixel cameras, and video encoders. It can record up to 32 IP cameras locally and globally via the Internet. Nexus enables you to configure, view, search, export, remotely upgrade, and monitor alarms simultaneously.

The Nexus Client Software is a cost-effective solution for your surveillance needs. Build your own computer, and just load DW's software to begin recording up to 32 IP Cameras.

## Features

<b>GENERAL</b>	<ul style="list-style-type: none"> <li>• Auto Detection for Most Major Brand IP Cameras</li> <li>• View and Record up to 32 IP Cameras Anywhere, Anytime</li> <li>• HDD Field Upgradable</li> <li>• Removable HDD Trays for Easy Maintenance</li> <li>• Simple Enterprise Scalability</li> <li>• Rack Mountable</li> <li>• No maintenance Fees</li> </ul>
<b>LIVE</b>	<ul style="list-style-type: none"> <li>• Search Single Channel in Live Mode</li> <li>• Powerful Digital Zoom in Live and Playback Mode</li> <li>• Full PTZ Control of Supported IP PTZ Cameras</li> </ul>
<b>PLAYBACK</b>	<ul style="list-style-type: none"> <li>• Advanced Motion Search</li> <li>• Smart Object Search/Calendar Search</li> <li>• Continuous, Motion Detection, and Sensor Recording Modes</li> <li>• POS with Text Overlay Support</li> <li>• Automatic Backup to Internal and External Devices</li> </ul>
<b>SPECIAL</b>	<ul style="list-style-type: none"> <li>• Network Bandwidth Control for Each Camera</li> <li>• Email Event Notifications</li> <li>• Onvif Conformant</li> <li>• Digital Signature Verification</li> <li>• Two-Way Audio (VMS to NVR)</li> <li>• Large Internal Storage up to 20 Terabyte</li> </ul>

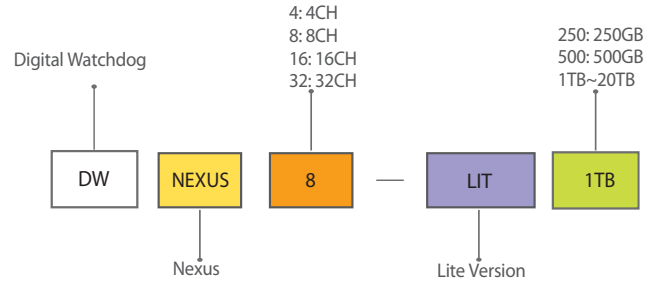
## Compatible IP Cameras



**Honeywell SONY TOSHIBA**

\*See Website for Complete List

## Nexus Part Numbers



## Nexus Licences

- DW-NEXUS-16Lic
- DW-NEXUS-32Lic

## Hardware Specification

	Nexus
# Cameras	4-32
Performance	Max 256 Mbps*
CPU	Intel® i7-2600-3.4Ghz Quad Core
Memory	3GB
Network	Gigabit (1x)
Video	On Board (AMD)
Video Port	SXGA, DVI-I, S-Video
OS	Windows 7
HDD	Up to 20TB

\*Max Recording throughput (250Mbps): Approx. 64ch 5-Megapixel H.264 cameras at 10fps when server is streaming out 16 channels of live or playback video.

## Client Hardware Recommendations:

Processor	Intel® Core 2 Quad Process Q9550 or Greater
Graphics	1920 x 1080
Ram	3GB DDR2 Memory
NIC	10/100/1000 Base-T Ethernet
OS	Windows XP or Higher

### MOBILE ACCESS

Web	Windows Explorer 6 or Higher
Apps	COMING SOON!!!