

Blackjack NVR SERIES

POWERED BY
DW spectrum
IPVMS

BUILT FOR THE USER



Simply Powerful, Powerfully Simple

VISIT OUR WEBSITE
FOR A COMPLETE LIST OF
COMPATIBLE
CAMERA MODELS



What is DW Spectrum?

Powerful and user-friendly video management solution, highly optimized to provide unlimited scalability, unmatched bandwidth savings, and simplified system setup and management.

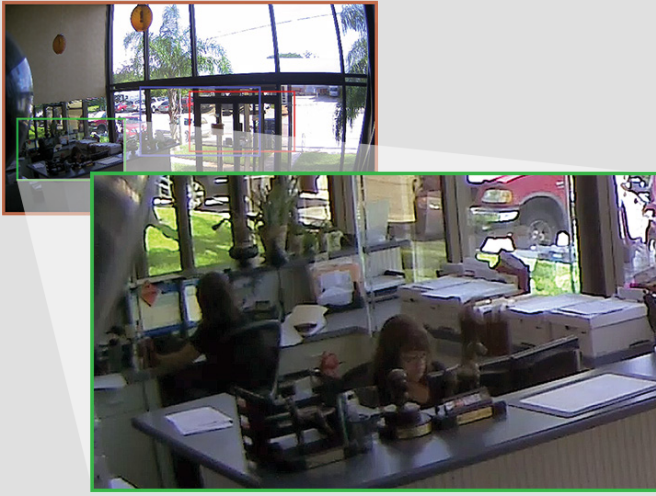


- Automatic Device Discovery
- Simple Enterprise Scalability
- Instant Motion-Based Smart Search
- Easy Drag-n-Drop Camera Management
- Dual Stream Recording
- Cross-Platform: Windows and Linux
- Graphical System Health Monitoring
- Seamless Transition from Live to Search

COMPLETE
INTEGRATION WITH
VMAX
LINE OF RECORDERS

SPYGLASS (REGION OF INTEREST)

The Spyglass feature lets you zoom into any area within a camera's field-of-view and watch the selected region as a separate display, allowing you to monitor smaller regions of interest separately from the overall camera's image



RULES & ACTIONS CUSTOMIZATION

Quickly setup alerts and notifications from network and storage failure, to motion detection or sensor activation on a camera. Setup to receive popup notifications, voice alerts, or an e-mail with the event link.



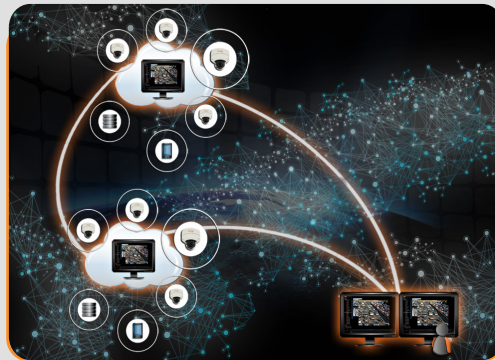
FISHEYE SCREEN DE-WARPING

DW Spectrum is built to be fully compatible with the market's leading Hemispheric cameras and is able to translate the camera's feed into multiple viewing methods including panoramic screens that de-warp the camera's image for a fully detailed view.



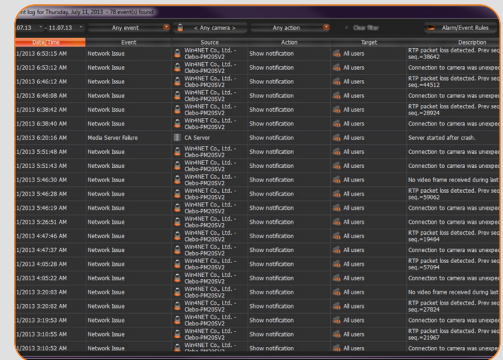
AUTO NETWORK CONFIGURATION

DW Spectrum will automatically discover, populate, and configure cameras on the network. Easily drag and drop cameras across servers and observe seamless enterprise recording!



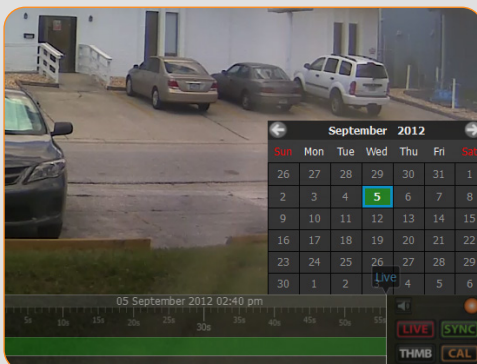
LOG REPORT & SEARCH

Any operational issues that may arise in your surveillance setup can be traced through the advanced log system provided by DW Spectrum, which comes fully equipped with detailed filtering methods to help you identify a specific problem and exporting options for your personal records.



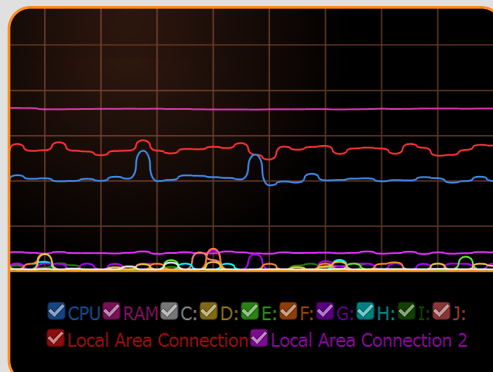
ADVANCED SEARCH CAPABILITIES

DW Spectrum offers a number of ways to quickly and accurately isolate the critical video security evidence users need, including calendar search and panoramic search.



GRAPHICAL SYSTEM HEALTH MONITORING

Access vital information about the HDD, CPU, and RAM health through informative, easy-to-understand graphical format.



ADVANCED PTZ CONTROL

The intuitive radial controller can be used to alter the camera's direction in all 3 axis, or simply draw a box within any region to immediately focus and zoom onto the area.



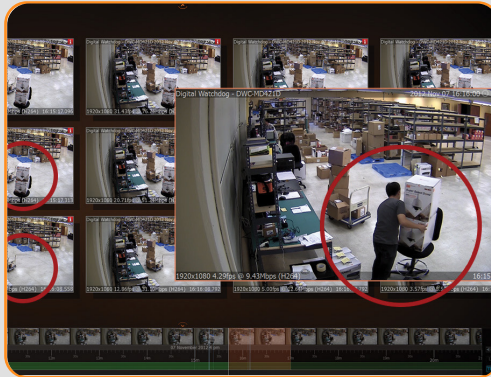
CUSTOMIZABLE LAYOUTS

DW Spectrum allows users to fully customize their layout views. No more limited pre-set views. As a user, you are free to customize a layout that fits your individual viewing and management preferences.



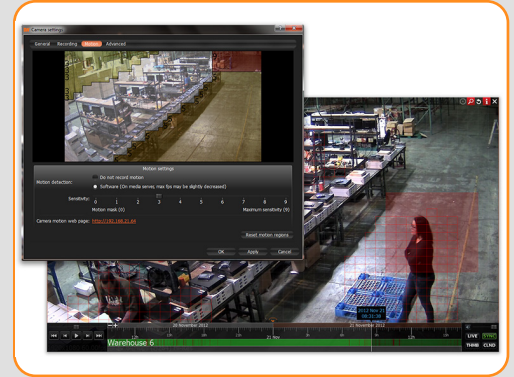
THUMBNAIL SEARCH

Chronologically narrow down your search to frame-by-frame detail for finding that critical moment.



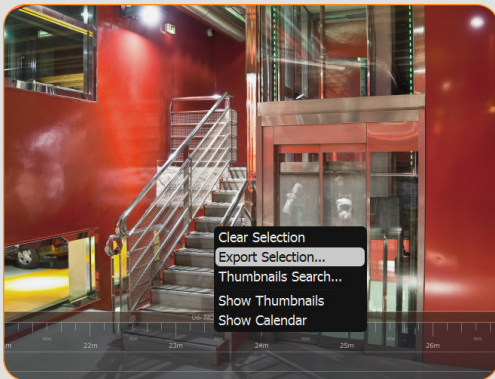
MOTION/ SMART SEARCH

Easily pinpoint and identify general motion, missing and foreign objects. Quickly and continuously watch video on user-selected areas (marked in red).



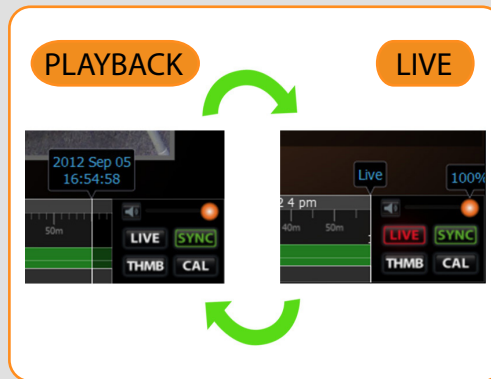
INSTANT VIDEO EXPORT

Mark your selection and export as an avi, mkv, and executable file in a quick, simple, and intuitive timeline interface.



SEAMLESS TRANSITION FROM LIVE TO RECORDED

Easily switch between live and review mode by simply scrolling back in time.



PANORAMIC CAMERA SINGLE LICENSING

DW Spectrum offers seamless simplicity with our single license requirement for all cameras including Arecont's SurroundVideo 20 Megapixel IP Cameras (180° and 360° Coverage)



DUAL STREAM RECORDING

Cameras can be set to record at high resolution when motion is detected and lower resolution at all other times. This highly optimized feature saves hard drive space while the recording process remains uninterrupted.



Blackjack Extreme Bandwidth Optimizer NVR



Summary

The Blackjack NVR powered by DW Spectrum is a powerful and user-friendly video management solution, highly optimized to provide unlimited scalability, unmatched bandwidth savings and simplified system setup and management. The architecture is cross-platform supporting both Windows and Linux.

Features

GENERAL	<ul style="list-style-type: none"> • Cross-Platform: Windows and Linux Supported • Graphical System Health Monitoring • Simple Enterprise Scalability
LIVE	<ul style="list-style-type: none"> • Fully Customizable Layouts • Easy Drag-n-Drop Camera Management and Recording • Advanced Motion Masking and Sensitivity Settings • PTZ Control • Region of Interest with Forensic Spyglass
PLAYBACK	<ul style="list-style-type: none"> • Instant Motion-Based Smart Search • Advanced Thumbnail Search and Calendar Search • Dual Stream Recording • Events Log & Search
SPECIAL	<ul style="list-style-type: none"> • Automatic Device Discovery and Display • HD (1080p) Screen Recording • ONVIF Conformant • E-Mapping • Hybrid Capable via Software Integration • Full Support and de-interlace of panoramic and fisheye cameras
ALARM NOTIFICATION	<ul style="list-style-type: none"> • Email Notification with playback link and JPEG image • Pop-up Notification • Event (Motion, Sensor) • Network Troubleshooting Notification • Storage Failure • Camera Disconnection

Compatible IP Cameras & Encoders



*See Website for Complete List and Details

Video Monitoring System

Unlimited Cameras, Advanced Motion Detection, Easy to use GUI, Enterprise Scalability, Extreme Bandwidth Savings

Hardware Specification

	Blackjack Blade	Blackjack Cube	Blackjack E-Rack
# Cameras	16	64	128
Recording Performance	Max 80 Mbps	Max 360 Mbps	Max 600 Mbps
CPU	Atom D2700	i-5 3550	i-7 3rd gen.
Memory	2GB	8GB	16GB
Network	1000 Mbps	1000 Mbps (2x) Dual NIC Card	1000 Mbps (2x) Dual NIC Card
Video	On Board	On Board (Intel)	ATI
Video Port	VGA / HDMI	DVI-I (for Analog) DVI-D (for Digital)	VGA / 2x HDMI / 4x DP
OS	Linux 64bit	Windows 7 64bit	Windows 7 64bit
HDD	Up to 2TB	Up to 9TB	Up to 144TB
Optional	-	-	RAID 5, Redundant Power Supply, Hot-Swap HDD Bays
Dimensions (in)	10 (L) 1.6 (W) 6.4 (H)	12.8 (L) 8.5 (W) 7.5 (H)	2U: 25.5(L) x 17.2(W) x 3.5(H) 3U: 25.5(L) x 17.2(W) x 5.2(H) 4U: 27.5(L) x 17.2(W) x 7(H)
Weight	4.53 lbs	Depends on HDD Space	Depends on HDD Space
Power Consumption	40 Watts, 19V DC, 2.1 Amps	250 Watts, 100 AC, 2.5 Amps	Dual Power, 2U + 3U: 1000W 4U: 1280W

Specifications are subject to change without prior notice.

Client Hardware Recommendations:

Processor	Intel Core i5 or greater
Graphics	1920 x 1080
Ram	4GB
NIC	10/100/1000 Base-T Ethernet
OS	Windows 7, Server 2008, Vista, XP, Linux Ubuntu 10.0

MOBILE ACCESS

Web	Windows Explorer, Firefox, Safari, Opera, Chrome
-----	--